

The National Primate Research Centers and Trans-NIH Research

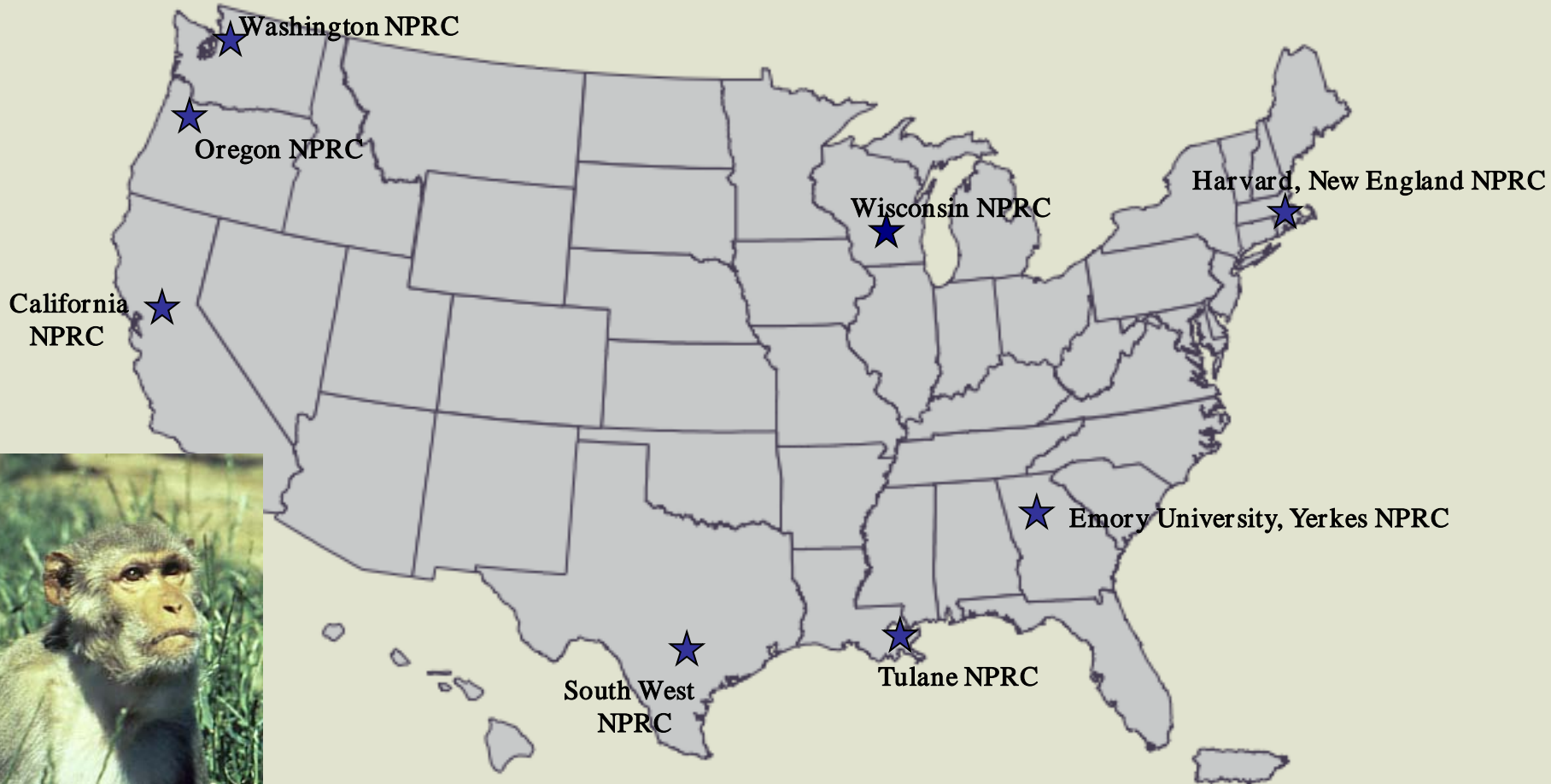
Jack Harding, PhD
Division of Comparative Medicine
ORIP / DPCPSI / OD



The NPRCs: Overview

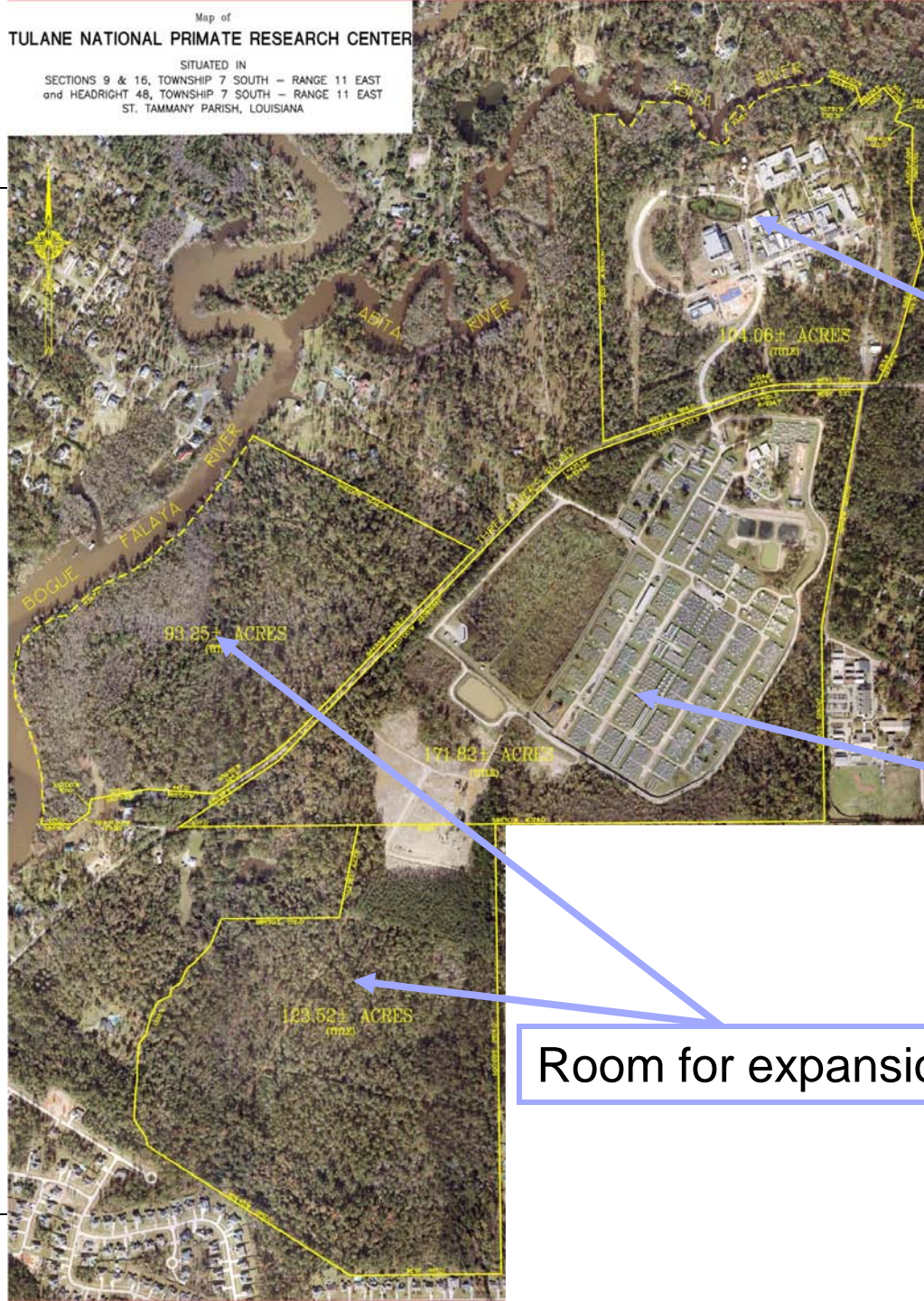
- The eight NPRCs provide comprehensive resources for researchers using NHPs for biomedical research.
- The NPRCs serve the entire NIH and others in the NHP research community.

National Primate Research Centers



Map of
TULANE NATIONAL PRIMATE RESEARCH CENTER

SITUATED IN
SECTIONS 9 & 16, TOWNSHIP 7 SOUTH - RANGE 11 EAST
and HEADRIGHT 48, TOWNSHIP 7 SOUTH - RANGE 11 EAST
ST. TAMMANY PARISH, LOUISIANA



Clinic, Lab, Office
and Administration

Breeding colony

Room for expansion

The NPRCs: Key Components

- NHP colonies and associated husbandry.
- Core Scientists: the critical intellectual resource.
- Training at all levels.
 - Includes grad students, postdocs, veterinarians.
- Core Laboratories.
- Tissue and DNA banks (35,000 samples distributed in FY 11).
- Administration.
- Communication and community outreach.
- General sources of information and advice for any researcher using NHPs.

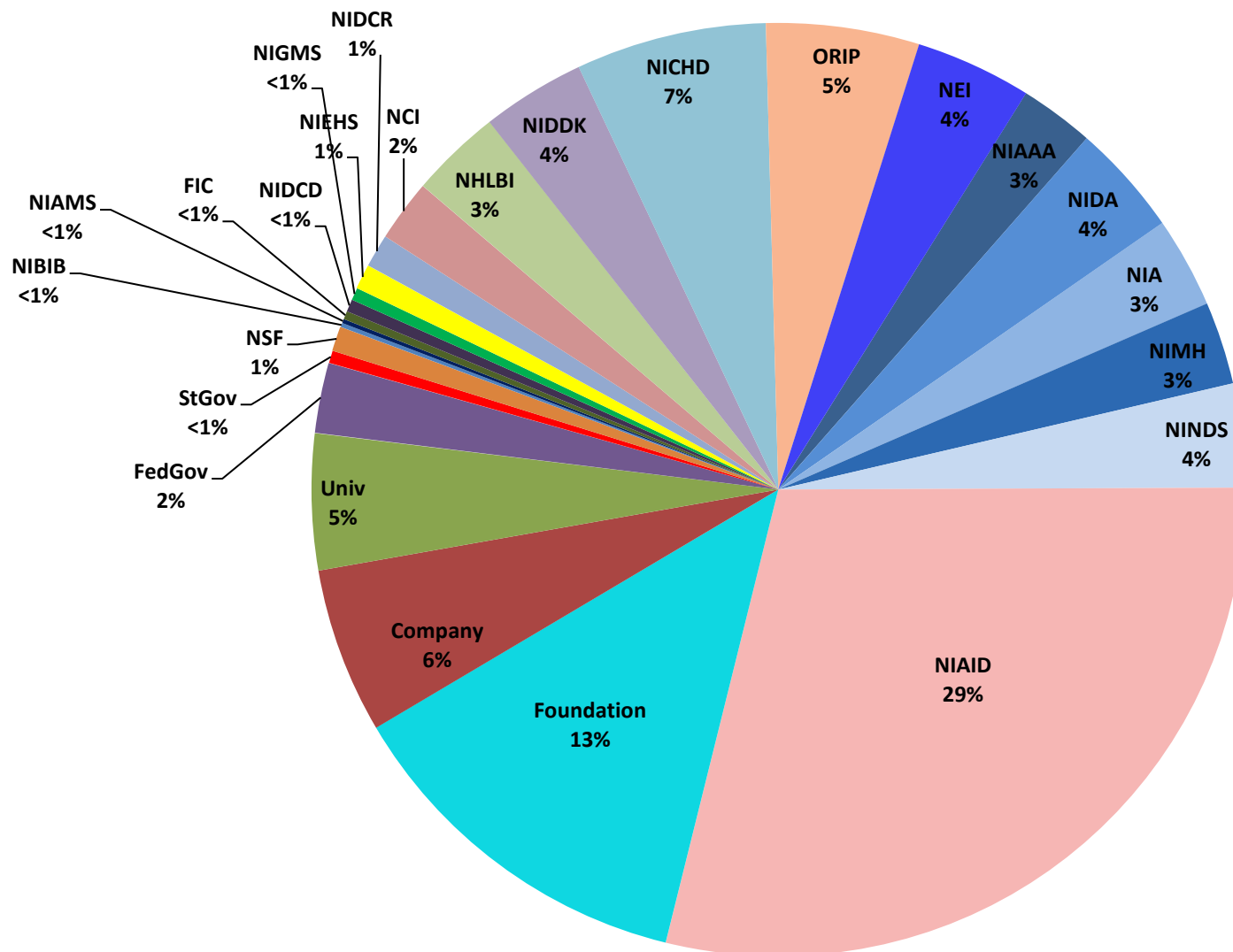
NPRCs By the Numbers

- Funding: \$86 million total costs in FY11 from DCM.
- DCM funds leveraged two-fold by cost recovery.
- 27,000 NHPs, including 16,000 rhesus.
- Overall, approximately 1700 personnel, including 300 core scientists.
- Support about 1000 individual research projects per year, involving about 2000 outside investigators (“affiliate scientists”).
- In FY 11 supported grants from 19 of the NIH ICs.

The NPRC Consortium

- Purpose is to leverage resources across the Centers
- “Grass roots” organized working groups.
 - e.g., colony management, genetics, behavior, etc.
- Linked together by a web site (intranet)
- NPRC Directors’ advisory group.
- Extensive DCM programmatic involvement.
- Some accomplishments:
 - “Animal locator,” Clinical Grand Rounds, Cross-NPRC genetic assays.

Grant Support for NPRC Projects, FY11



The NPRCs Support All Major Areas of Biomedical Research: Some Examples

- Infectious Disease
 - AIDS, malaria, TB
- Neuroscience
 - Neurodegenerative Diseases, Addiction, Behavior
- Vision
- Aging
- Metabolic syndrome
- Cardiovascular Disease
- Cancer
- Fetal Programming
- Women's health and reproductive biology

Summary

- Comprehensive NHP Resources, used across the NIH.
- Used for both discovery and translational research in all areas of biomedicine.
- As an introduction to Dr. Veazey: Importance of the Core Scientists to the NPPRC Mission.
- Ronald Veazey. DVM, PhD
 - Professor of Pathology, Tulane University School of Medicine
 - Chair of the Division of Comparative Pathology, TNPPRC