



# Development of a Potential Funding Opportunity Announcement for Discovery of Bioactive Natural Products by AI/AN Researchers

## NIH Tribal Advisory Committee Meeting

Sheila A. Caldwell, PhD  
Program Director  
Center for Research Capacity Building  
National Institute of General Medical Sciences  
National Institutes of Health



National Institutes of Health  
Office of Extramural Research

# NIGMS Mission

---



- **Supports fundamental research.**
- **Provides leadership for training of the next generation of scientists.**
- **Promotes workforce diversity.**
- **Supports building research capacity and development of research infrastructure in underserved regions and institutions.**



National Institutes of Health  
Office of Extramural Research

# Bioactive Natural Products

---

- Bioactive natural products are molecules made by plants, animals or microbes that have biological activity - *i.e.*, can have an effect on a cell or organism.

Examples of bioactive natural products:

- Yew tree bark contains Taxol, now used as a breast cancer drug
- Sweet wormwood contains artemisinin, now used as an antimalarial drug



National Institutes of Health  
Office of Extramural Research

# Natural Products Concept

---

Create a Funding Opportunity Announcement to support the study of bioactive molecules derived from AI/AN traditional sources.

- Identify bioactive molecules from plants and other traditional natural sources
- Test potential uses of these molecules
- Promote research and research training by and with AI/AN community members and scientists



National Institutes of Health  
Office of Extramural Research

# Natural Products Concept

---

## Key Requirements:

- Research agenda set by AI/AN communities
- Research led by AI/AN communities
- Grants made to AI/AN organizations
- Intellectual property derived from the research would be held by AI/AN community – not NIH or others

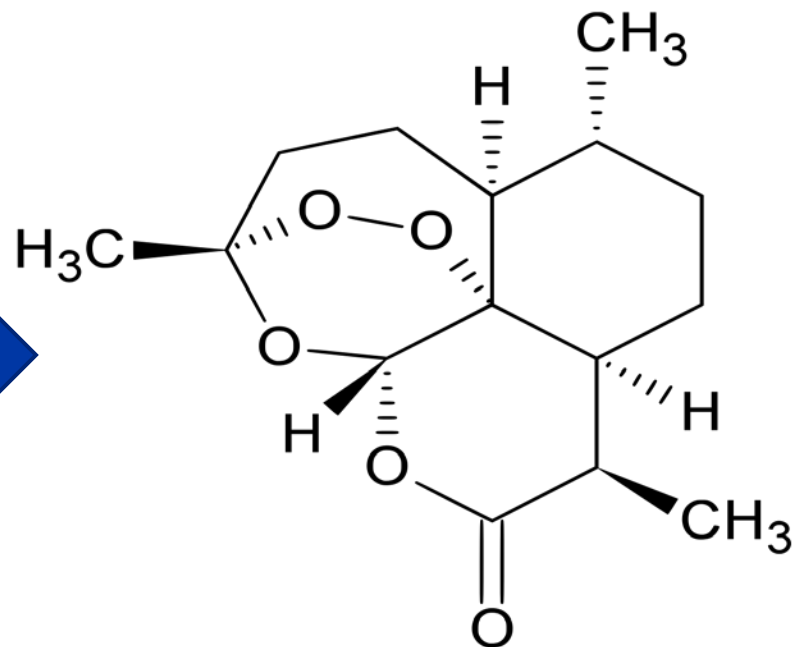
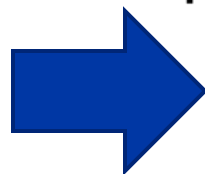


National Institutes of Health  
Office of Extramural Research

# Discussion/Suggestions



Sweet Wormwood



Artemisinin

For future suggestions please contact me at:  
[caldwells@mail.nih.gov](mailto:caldwells@mail.nih.gov) or 301-594-3900



National Institutes of Health  
Office of Extramural Research