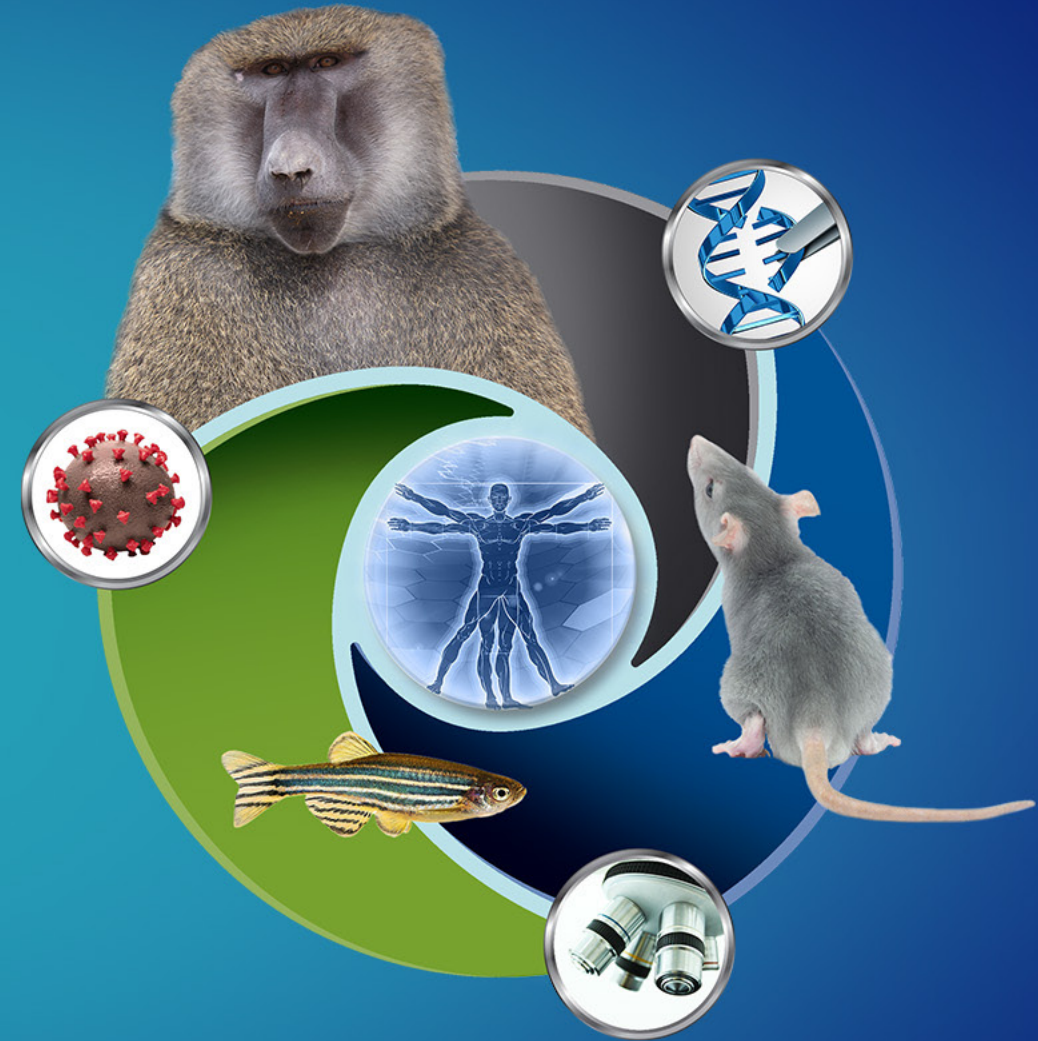


Informational Concept Update: Dual Purpose with Dual Benefit Research in Biomedicine and Agriculture Using Agriculturally Important Large Domestic Animals (R01)

Franziska B. Grieder, DVM, PhD
Director, ORIP



Informational Concept Update

Title: Dual Purpose with Dual Benefit Research in Biomedicine and Agriculture Using Agriculturally Important Large Domestic Animals (R01)

Collaborators: NIH (NHLBI, NICHD, ONR, ORIP, and ORWH) and NIFA (National Institute of Food and Agriculture)-USDA

Objective: Stimulate and encourage investigations in biomedicine and agriculture through the use of pertinent large domestic farm animals that mimic specific human developmental, physiological or disease states.

Funds Available and Anticipated Number of Awards: Contingent upon NIH appropriations and the submission of highly meritorious applications

Award Project Period: 3 - 5 years

Council Action: Informational



Background

- Congressional Report Language urges re-starting the inter-agency program using agriculturally important large domestic farm animals to research problems/challenges in both agriculture and biomedicine
- Historically, large domestic farm animals (such as pig, sheep, goat, cow, and horse) contributed to fundamental knowledge regarding the physiology and pathophysiology of organ systems and the development of reproductive technologies
- NICHD/NIH and NIFA (National Institute of Food and Agriculture)-USDA previously collaborated on funding opportunities that supported research on assisted reproduction technologies, fetal physiology, birth control, neuroendocrinology, muscle biology, diabetes, and obesity



Program Goals

- Fund excellent research that address problems in both human health and animal agriculture
- Advocate utility of large domestic farm animals as models to study high priority areas in both biomedical and agricultural research
- Encourage scientists working with large domestic farm animals to become part of NIH research process
- Provide training opportunities and incentives for animal and veterinary scientists to apply for NIH grants



Application Requirements

- Address at least one priority research area as defined by current participants:
 - NIFA-USDA
 - NIH – NICHD, NHLBI, OD (ORIP, ORWH, ONR)
- Target a problem important to both human health and animal agriculture
- Use large domestic farm animals as experimental models



Informational Update

Discussion and comments

