



# NIH and Congress



Donna Crews  
Legislative Analyst  
NIH Office of Legislative  
Policy & Analysis  
August 22, 2019



# My Background



Legislative Analyst, NIH Office of Legislative & Policy Analysis, 2016

Legislative Analyst, HRSA Office of Legislation, 2015 - 2016

Director of Government Affairs, AIDS United, 2002 - 2015

- Advised nationwide Public Policy Committee on HIV policy
- Co-chaired the national HIV community appropriations committee
- Served on Coalition for Health Funding Board

Congressional Staff, 1989-2001

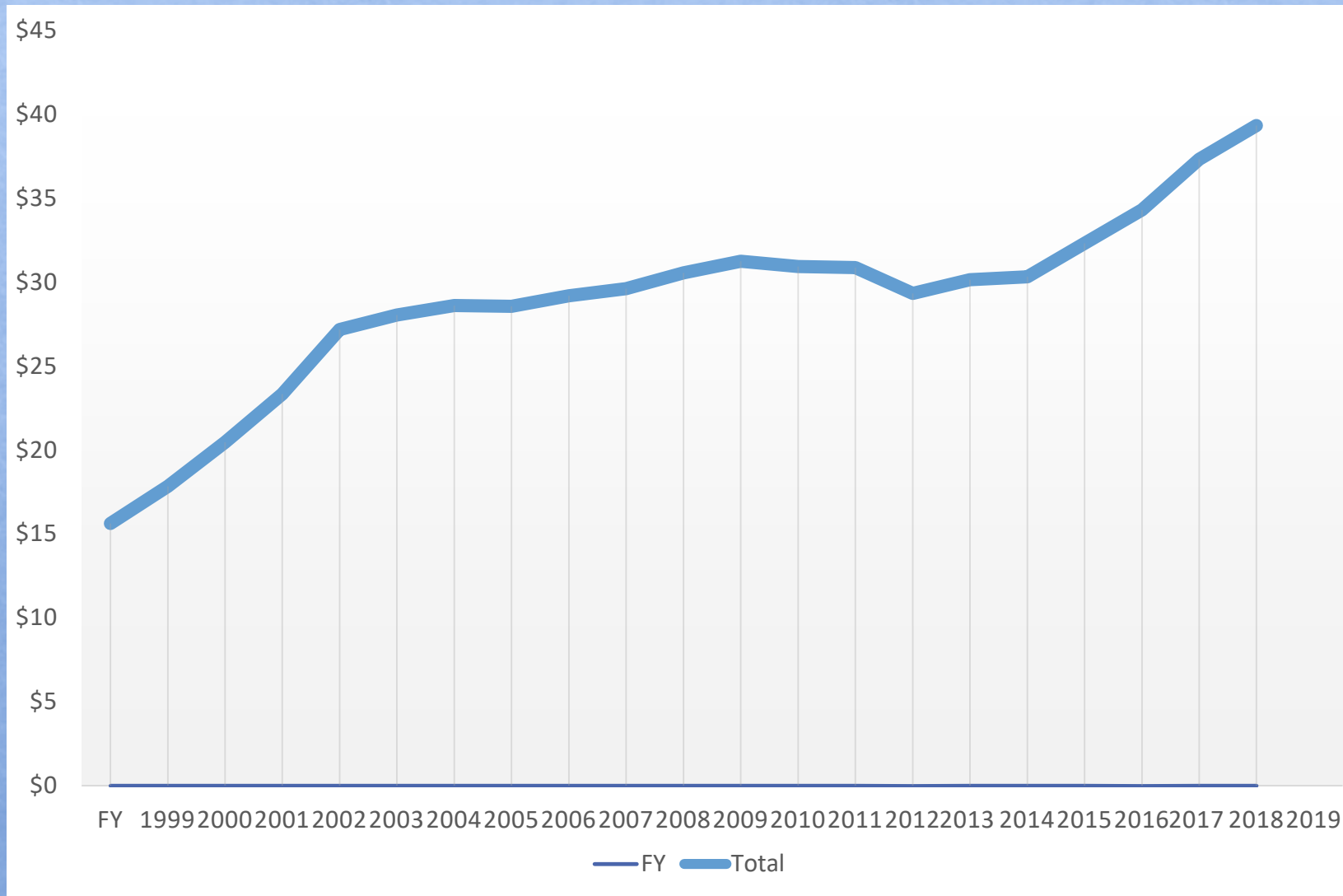
- Rep. Donald Payne, Sr. (D-NJ) 1989 - 1997
- Rep. Maxine Waters (D-CA) 1997 - 2001
- Director of Congressional Black Caucus 1995 - 1999

Master's in Social Work from Columbia University



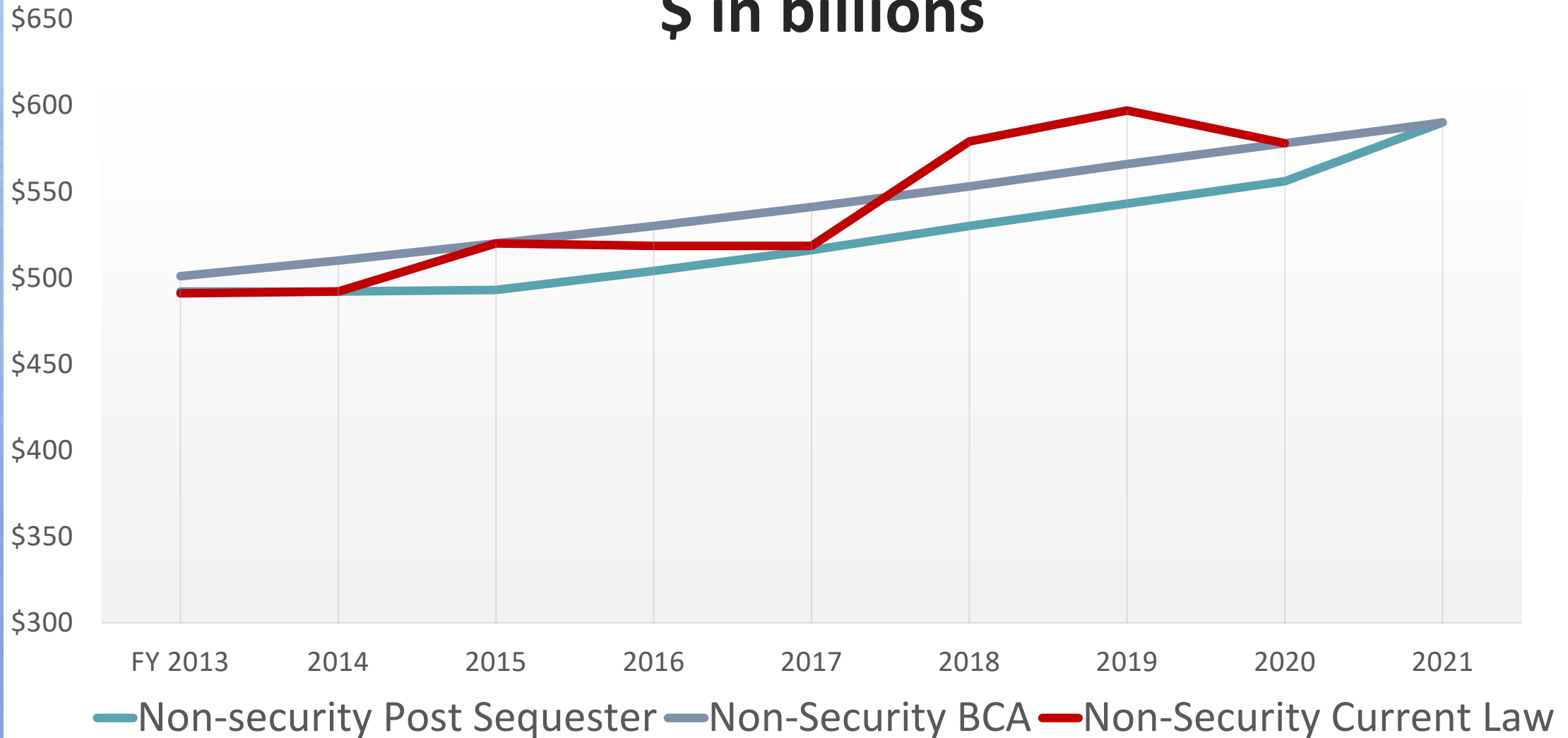
# NIH Appropriations

nominal \$ in billions



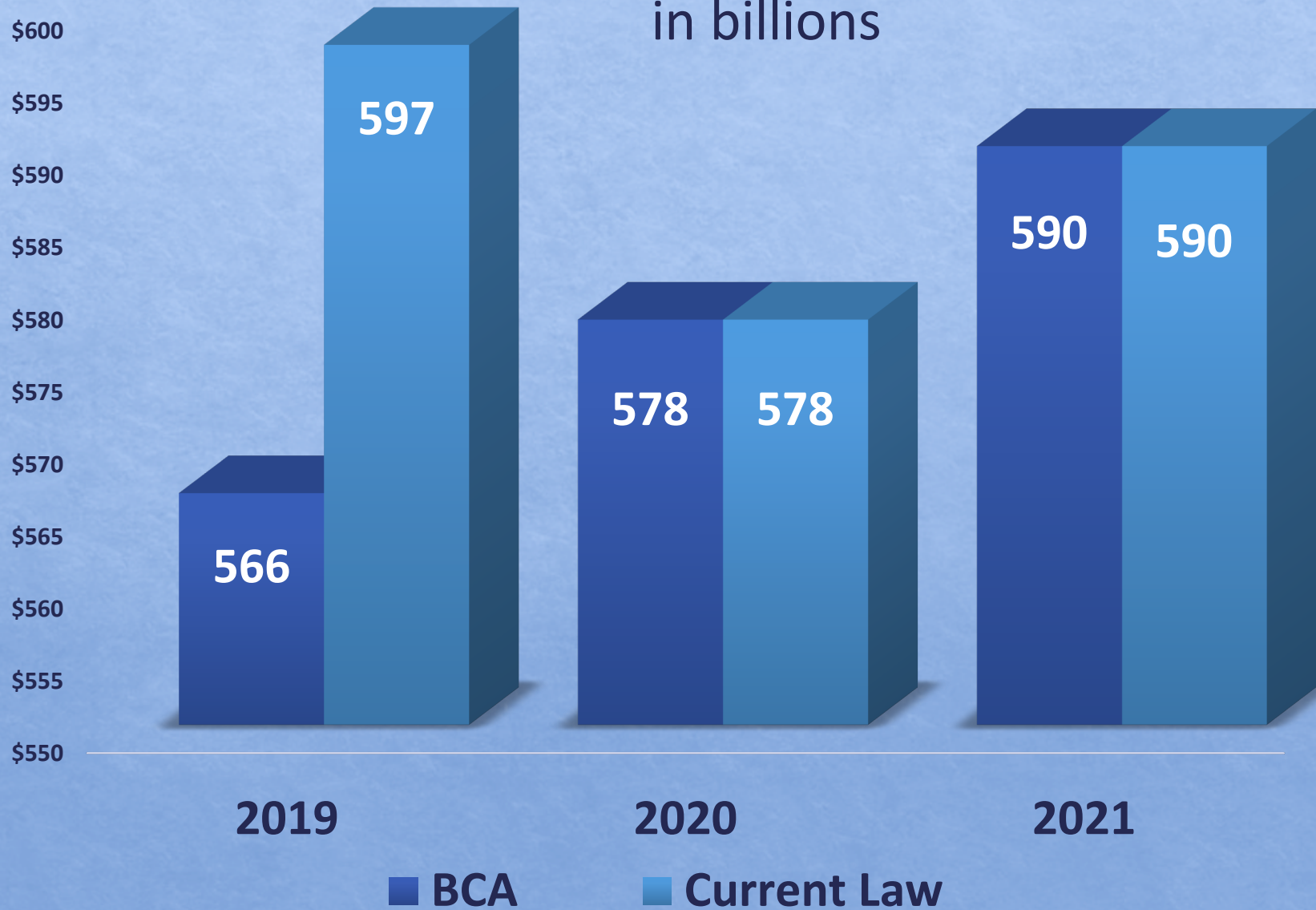
# Non Defense Budget Caps

## \$ in billions



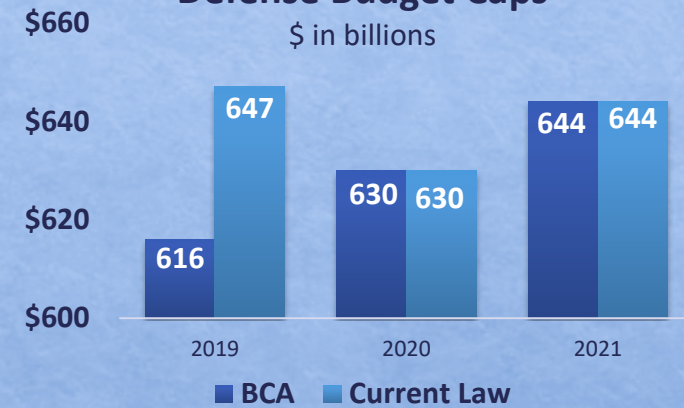
# Non-Defense Budget Caps

in billions



## Defense Budget Caps

\$ in billions





# Big election coming 2020

- There are 11 Democratic Senators up for reelection; 1 open Senate seat
- There are 19 Republican Senators up for reelection; 3 open Senate seats

Seven Democratic Senators are running for President

Senators have already announced retirements

- 4 Senators out of 100 have announced
  - 3 Republicans
  - 1 Democrat



# Big election coming 2020

- All House Members are up for reelection

Many Members have already announced retirement

- 3 House Democratic Members

- 1 is running for higher office

- 11 House Republican Members

- 2 are running for higher office



# 116<sup>th</sup> - Congress by the Numbers

- 535 Members of Congress – 435 House / 100 Senate – most diverse Congress ever
  - 106 women in the House
  - 25 women in the Senate
  - 55 African American Members in the House
  - 3 African American Members in the Senate
  - 45 Hispanic Members in the House
  - 5 Hispanic Members in the Senate
  - 17 Asian American Members in the House
  - 3 Asian American Members in the Senate
  - 4 Native American Members in the House
    - 2 Dem 2 GOP
  - 0 Native American Members in the Senate



# Big election happened in 2018

- Lots of retirements
  - Openings on Committees and in leadership
- Largest freshman class in many years
  - 9 new Senators out of 100 (9%)
  - 89 new House Members out of 435 (20%)





Turnover on  
Capitol Hill:  
Champions  
Lost



# Turnover on Capitol Hill: New Members





New  
Members  
include  
First 2  
Native  
American  
women  
elected to  
Congress







Photos with Reps. Haaland and Davids  
with the Native American NIH students





# Congressional Native American Caucus Co-Chairs





# 35 Physicians and Scientists in the 116<sup>th</sup> Congress

## SENATE

2 Physicians  
1 Optometrist

## HOUSE

16 Physicians  
5 Dentists  
3 Nurses  
3 Veterinarians  
2 Psychologists  
2 Physical Scientists  
1 Pharmacist





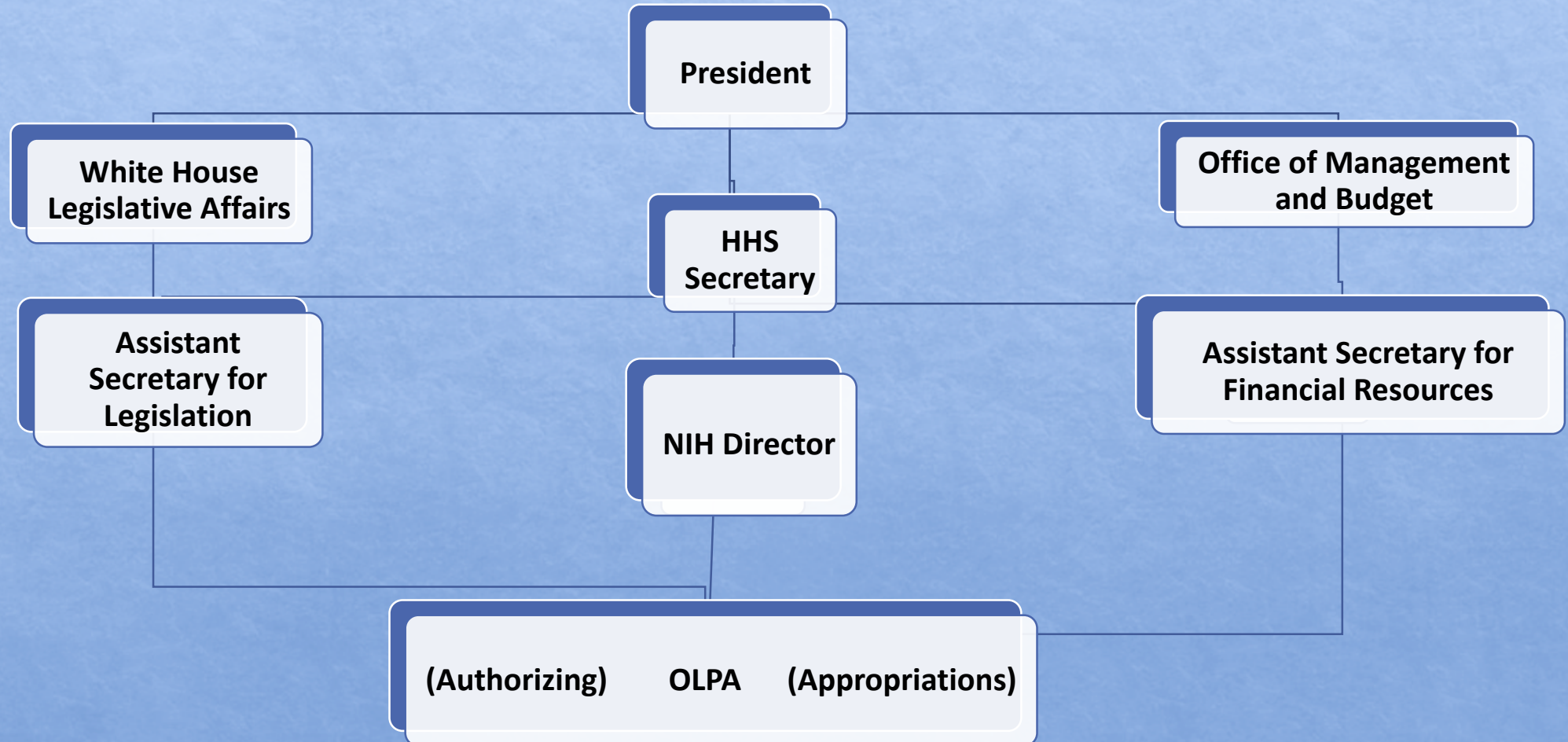


# Turnover at NIH





# Administration Legislative Staffing





# Average Congressional Office

## House (15ish)

Chief of Staff / Administrative Assistant

Legislative Director

2-3 Legislative Assistants/Aides

1 Legislative Correspondent

Communications Director/Press Sec.

Scheduler

Office Manager

1 Staff Assistant

District Director

2-3 Caseworkers

## Senate (30ish)

- Chief of Staff / Administrative Assistant
- Deputy

- Legislative Director
- 4-5 Legislative Assistants/Aides
- 3-4 Legislative Correspondents

- Communications Director
- Press Secretary
- Social Media Staff

- 2 Schedulers

- Office Manager
- 2 Staff Assistants
- IT Staff

- State Director
- 10 Caseworkers



Senators  
Running for  
President

President  
up for  
Re-election

Tariffs?

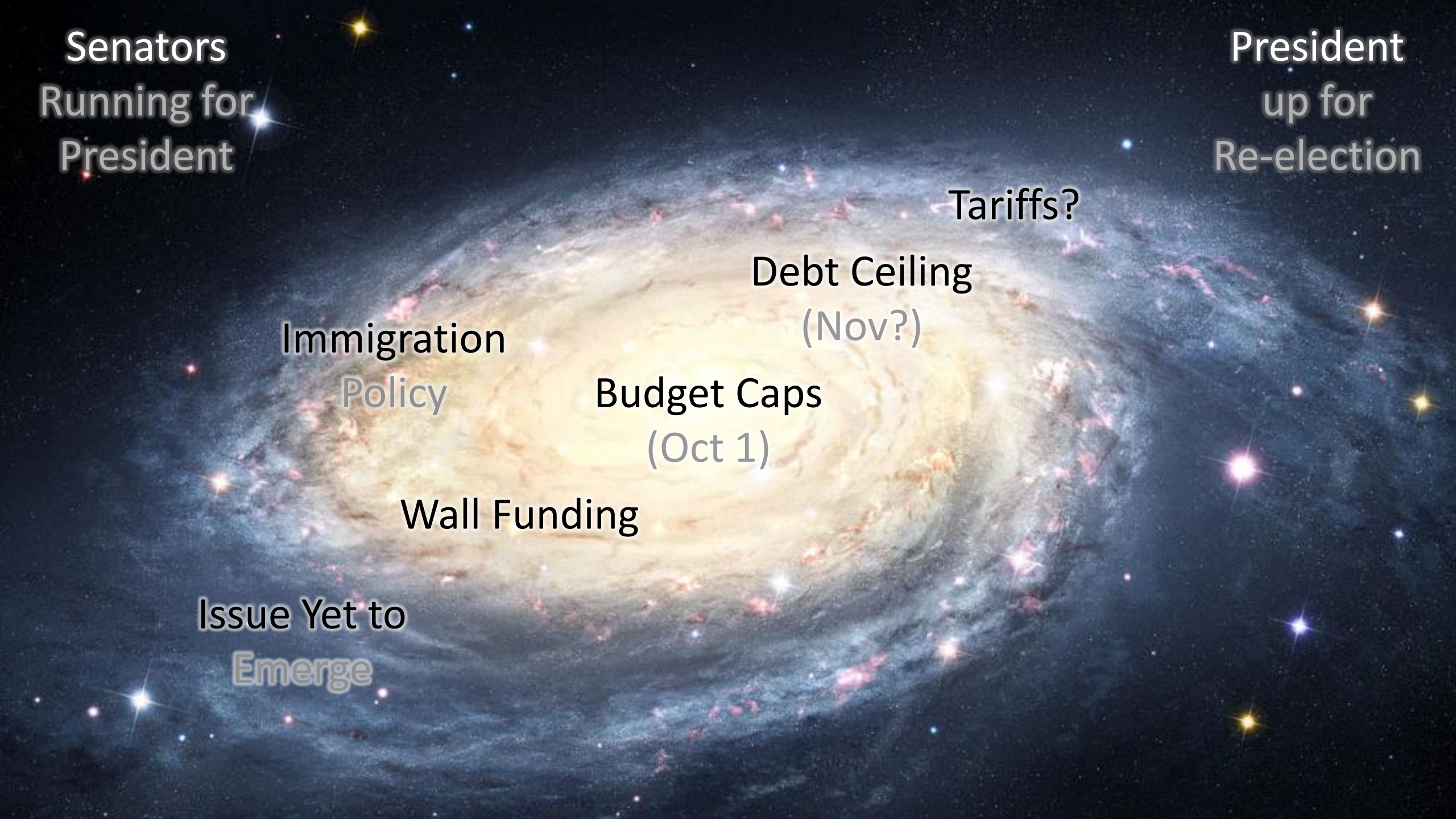
Debt Ceiling  
(Nov?)

Immigration  
Policy

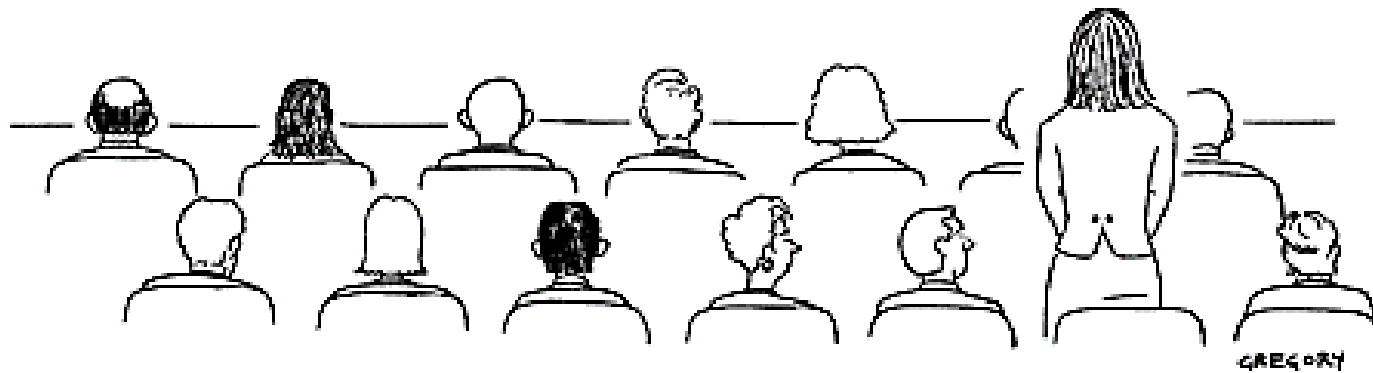
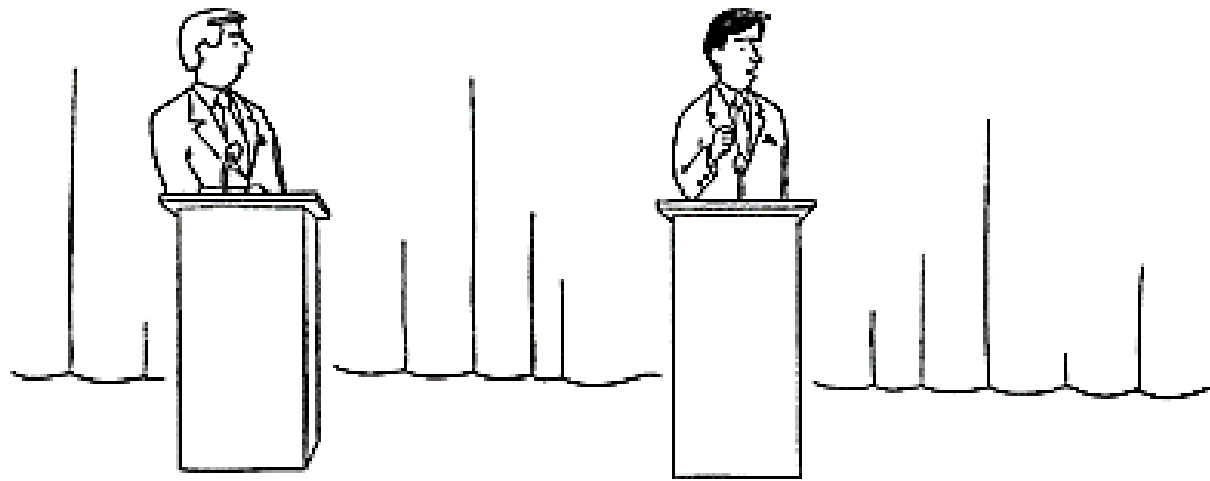
Budget Caps  
(Oct 1)

Wall Funding

Issue Yet to  
Emerge







*"That's an excellent prescreened question, but before I give you my stock answer I'd like to try to disarm everyone with a carefully rehearsed joke."*

# Questions?



# Contact Information

- Donna P. Crews, MSW
- Legislative Analyst
- Building 1, Room 244
- 1 Center Drive
- Bethesda, MD 20892
- [donna.crews@nih.gov](mailto:donna.crews@nih.gov)
- 301-496-3471
- 301-219-6420 cell