



NIH FY 2021-2025 Sexual & Gender Minority Research Strategic Plan

**Karen L. Parker, PhD, MSW
(Pronouns: She & Her)**

**Director, Sexual & Gender Minority Research Office
Division of Program Coordination, Planning, and Strategic Initiatives**

May 15, 2020

Acknowledgements

Sexual & Gender Minority Research Office (SGMRO)



Irene
Avila, PhD
(She, Her)



Christopher
Barnhart PhD
(He, Him)



Ryan
Mahon, MSW
(They, Them)



Shyam
Patel
(He, Him)



Overview of Presentation

- Background
- Strategic Planning Process
- NIH FY 2021—2025 SGM
Research Strategic Plan
 - Scientific Themes & Research Opportunities
 - Operational Goal Areas
 - Management & Accountability
- Q&A





Background

NIH Definition of SGM

“Sexual and gender minority (SGM) populations include, but are not limited to, individuals who identify as lesbian, gay, bisexual, asexual, transgender, Two-Spirit, queer, and/or intersex. Individuals with same-sex or -gender attractions or behaviors and those with a difference in sex development are also included. These populations also encompass those who do not self-identify with one of these terms but whose sexual orientation, gender identity or expression, or reproductive development is characterized by non-binary constructs of sexual orientation, gender, and/or sex.”

[NOT-OD-19-139](#)



Sexual & Gender Minority Research Office (SGMRO)– What We Do

- **Coordinate** SGM health research activities across NIH
- **Represent** NIH at conferences and events focused on SGM research
- **Serve** as a resource for the extramural and NIH communities about SGM-related research activities
- **Connect** extramural researchers with key NIH contacts
- **Convene** workshops to inform priority setting and research activities
- **Collaborate** with NIH ICOs on the development of SGM health research reports
- **Manage** information dissemination related to SGM research
- **Leverage** resources and develop initiatives to support SGM health research



NIH SGM-Related Accomplishments

- Expansion of the SGMRO
- Increase in number of SGM-related projects funded by the NIH
- SGMs as a health disparity population for NIH research
- SGM Health Research Regional Workshops
- Scientific workshops
- SGM Investigator Awards Program
- SGMRO Administrative Supplements Program
- Expansion of SGM data collection efforts at the NIH
- Publication of SGM-specific NOSIs and FOAs



Strategic Plan Input

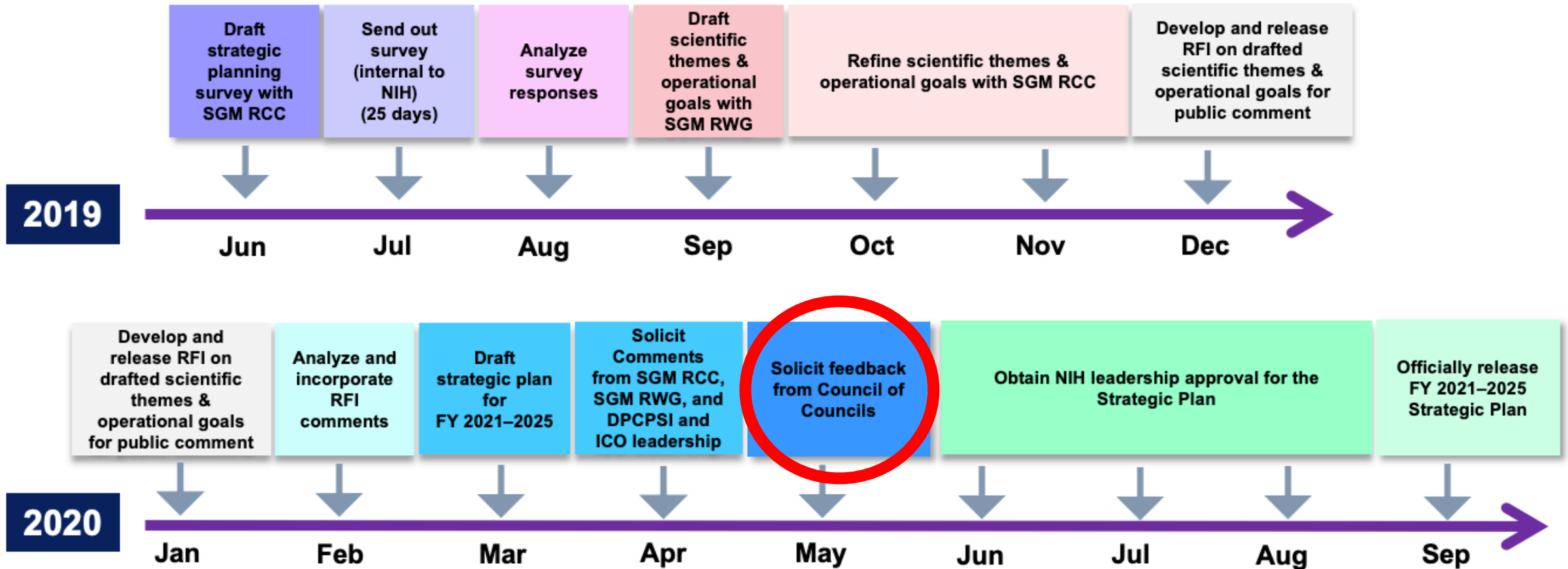


Strategic Plan Input

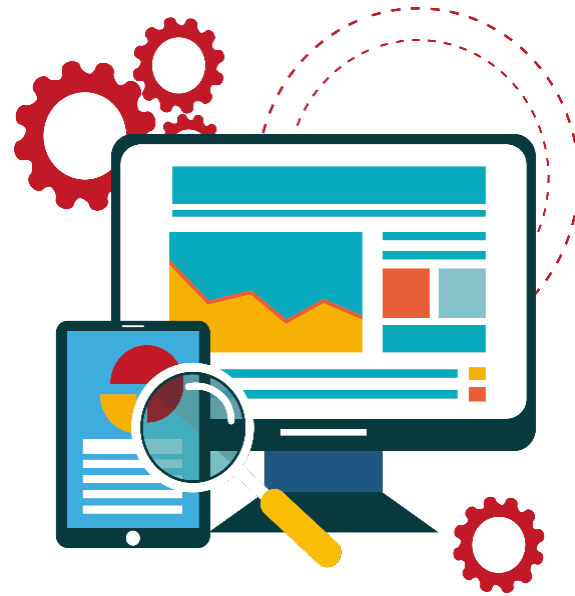
- Targeted Stakeholders at NIH
- Council of Councils SGM Research Working Group
- NIH SGM Research Coordinating Committee
- Public (RFI and Listening Session)
- DPCPSI Leadership
- Institute, Center, and Offices
- NIH Leadership
- Council of Councils



Strategic Plan Timeline



NIH FY 2021—2025 SGM Research Strategic Plan



Overview of the Strategic Plan

- Overarching Considerations
- Scientific Themes & Research Opportunities
- Operational Strategic Goal Areas
- Management & Accountability



Overarching Considerations

- Intersectionality
- Life Situations
- Aging
- SGM Subpopulations
- Relevant Research Strategies



Scientific Themes & Research Opportunities



Scientific Theme 1


Clinical Research

- Clinical trial recruitment
- Biobank or repository of tissue samples
- Outcomes related to various Differences in Sex Development (DSD) conditions/Intersex
- Sexual and reproductive care, reproductive aging, and pregnancy outcomes



Scientific Theme 2

Social & Behavioral Research

- Health services research 
- Clinical education
- Stigma and discrimination
- Violence (includes sexual assault, interpersonal violence, and other)
- Mental health
- Suicide risk and prevention
- Substance use
- Coming out process
- Social support/networks
- Resilience



Scientific Theme 3

Research in Chronic Diseases & Comorbidities

- Alzheimer's disease & related dementias (ADRD)
- Cancer
- Diabetes
- Heart disease
- HIV/AIDS
- Infectious diseases (STIs, HCV)
- Obesity



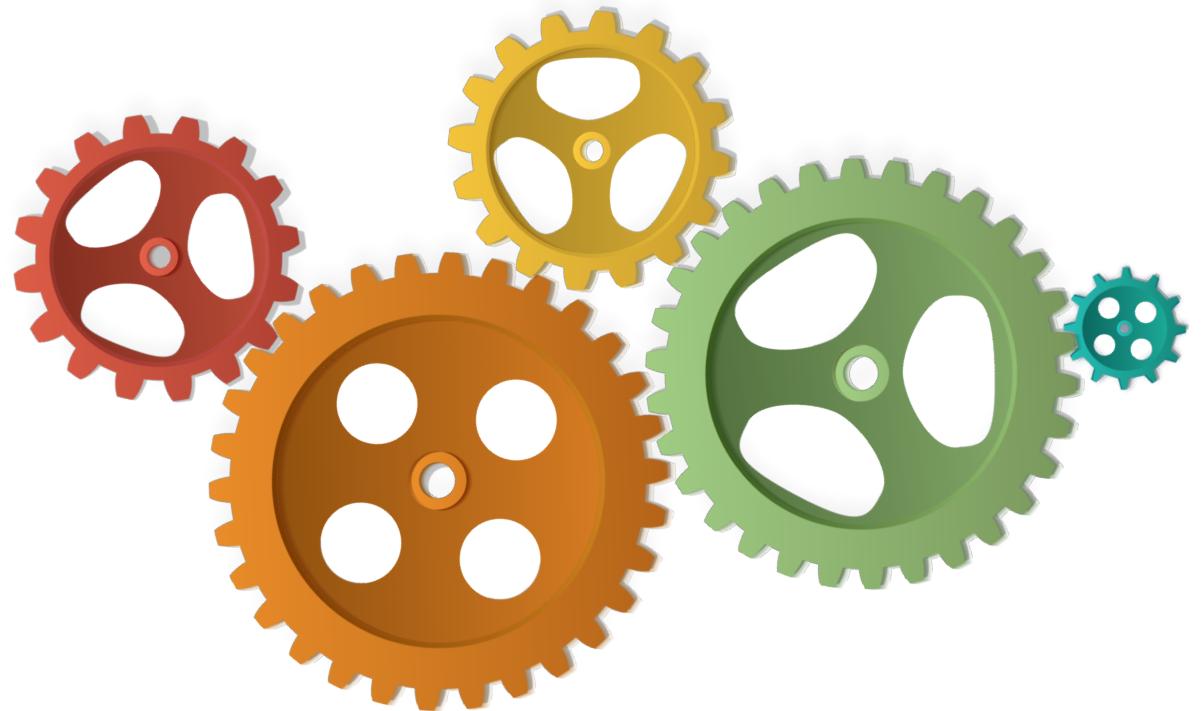
Scientific Theme 4

Methods & Measurement Research

- Development of novel measures and evaluation of existing measures
- Standardization of Sexual Orientation and Gender Identity (SOGI), and intersex status questions



Operational Strategic Goal Areas



Operational Goal 1

Advance rigorous research on the health of SGM populations in both the extramural and intramural research communities

- Develop scientific workshops to identify research opportunities
- Encourage NIH Institute, Centers, and Offices (ICOs) to set SGM health-specific and relevant research as a priority
- Expand awareness of SGM-relevant research initiatives at the NIH
- Increase grant support for SGM health-specific research



Operational Goal 2

Expand SGM health research by fostering partnerships and collaborations with a strategic array of internal and external stakeholders

- Increase communications and training with ICOs and external stakeholders
- Increase SGM expertise in NIH review panels and study sections
- Encourage cultural competency training opportunities on the specific characteristics of SGM health research to NIH-funded extramural and intramural clinical trainees and researchers



Operational Goal 3


Foster a highly skilled and diverse workforce in SGM health research

- Develop resources and tools related to SGM health research for internal and external stakeholders
- Conduct regional workshops focused on SGM health research
- Develop a grant mechanism to support institutional training efforts
- Encourage recruitment and retention of SGM researchers in the biomedical workforce
- Collaborate with NIH training and workforce offices on SGM diversity issues to address the NIH Workplace Climate and Harassment Survey results concerning SGM populations to create a more welcoming environment



Operational Goal 4

Encourage data collection related to SGM populations in research and the biomedical research workforce

- Encourage expansion of SOGI data collection and subsequent analyses in health care and related settings through such mechanisms as surveys, national data sets, and administrative data collection
 - Leverage existing data sets by engaging with ICOs and external organizations to collect SOGI data
 - Enhance SOGI-related data resources and data sharing, ensuring data privacy and security
- 

Management & Accountability for the Strategic Plan



Management & Accountability

- *SGM Research Portfolio Analysis*
- *SGMRO Annual Report*
- Mid-course review by the SGM Research Working Group
- SGM health research listening sessions
- Presentations on current SGM health research and related developments at the NIH



Thank You!

