

Advancing Science for the Health of Women: 2019-2023 Trans-NIH Strategic Plan

Janine Austin Clayton, M.D.

NIH Associate Director for Research on Women's Health
Director, Office of Research on Women's Health
National Institutes of Health

Presentation to the Council of Councils
January 26, 2018



National Institutes of Health
Office of Research on Women's Health

orwh.od.nih.gov | [#SABV](https://twitter.com/SABV) | [@NIH_ORWH](https://twitter.com/NIH_ORWH)

Women's Health ~ The Health of Women

Consideration of sex & gender influences—in the context of biopsychosocial & life course factors—across the biomedical research continuum, to inform & improve the health of women

Women's Health Research – study of health conditions (& health determinants):



- that are specific to women
 - more common or serious in women
 - have distinct causes / manifestations in women
- OR • have different outcomes or Tx in women

IOM. 2010. *Women's Health Research*. Washington, DC: Nat'l Acad. Press.

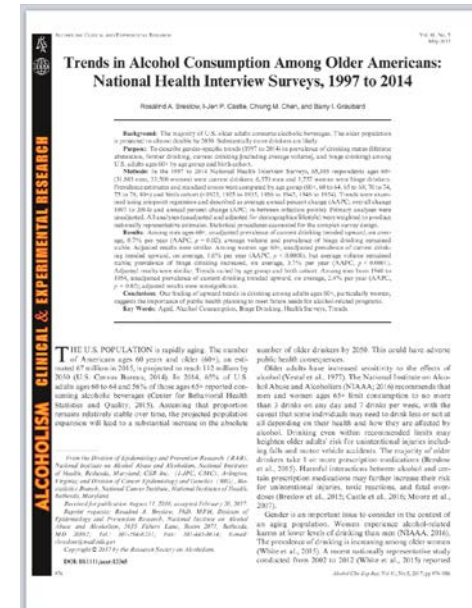
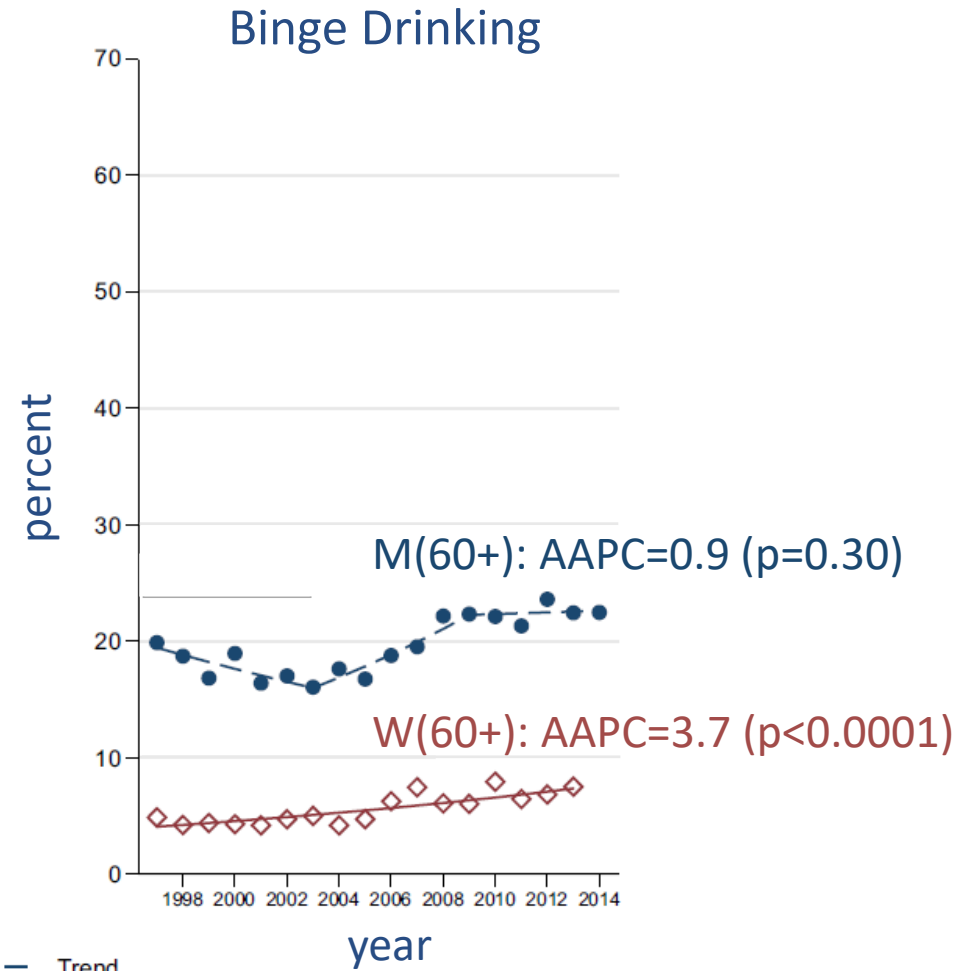
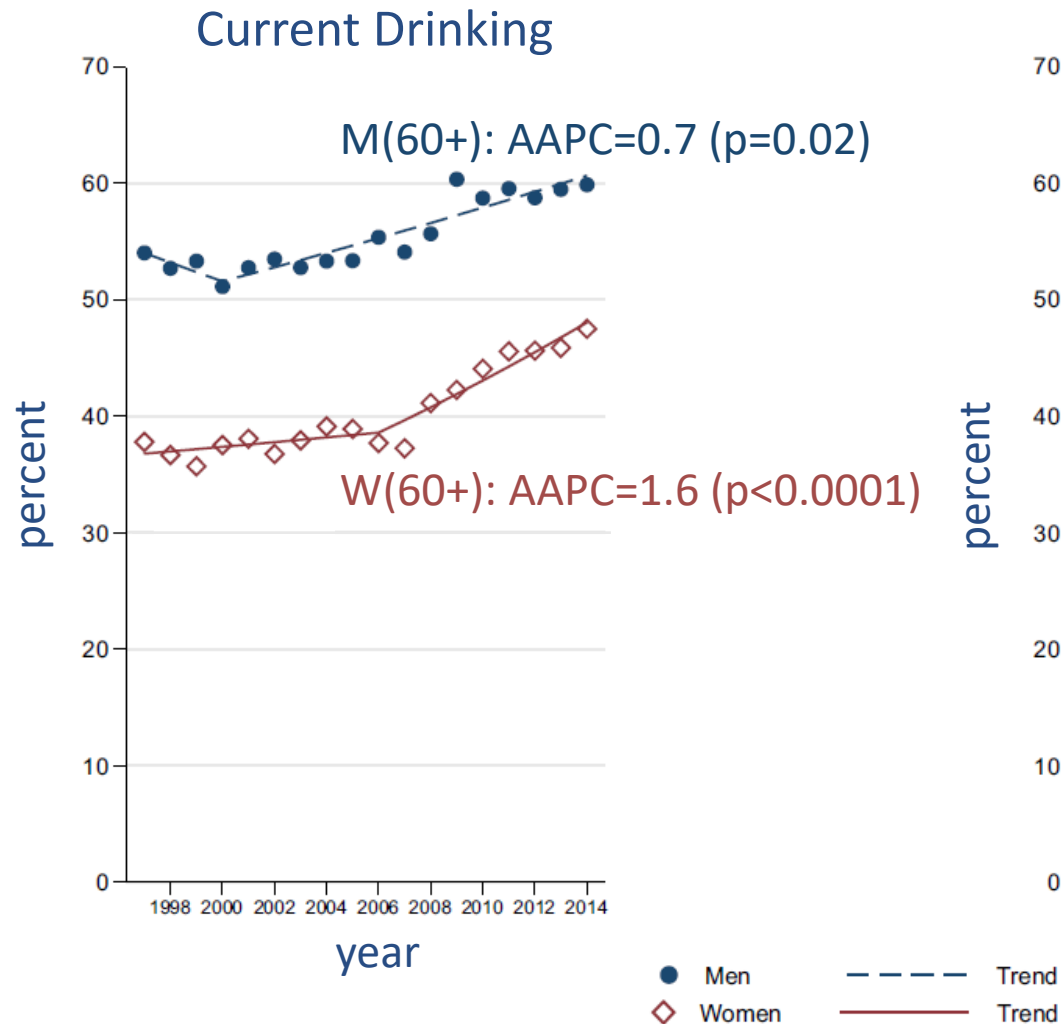
Health of Women:

- more than conditions & diseases that only or mostly affect women
- includes sex & gender influences on all aspects of health & disease



National Institutes of Health
Office of Research on Women's Health

Trends in alcohol consumption are steeper for women than men



ORWH Draft Vision & Mission

Vision

Sex & gender influences are integrated into the biomedical research enterprise; every woman receives evidence-based disease prevention & treatment tailored to her own needs, circumstances & goals; and women in science reach their full potential.

Mission

To enhance research related to diseases, disorders & conditions affecting women; to help ensure that women are appropriately represented in biomedical research supported by the NIH; and to improve the advancement of women in biomedical careers.



National Institutes of Health
Office of Research on Women's Health

Contextual Landscape

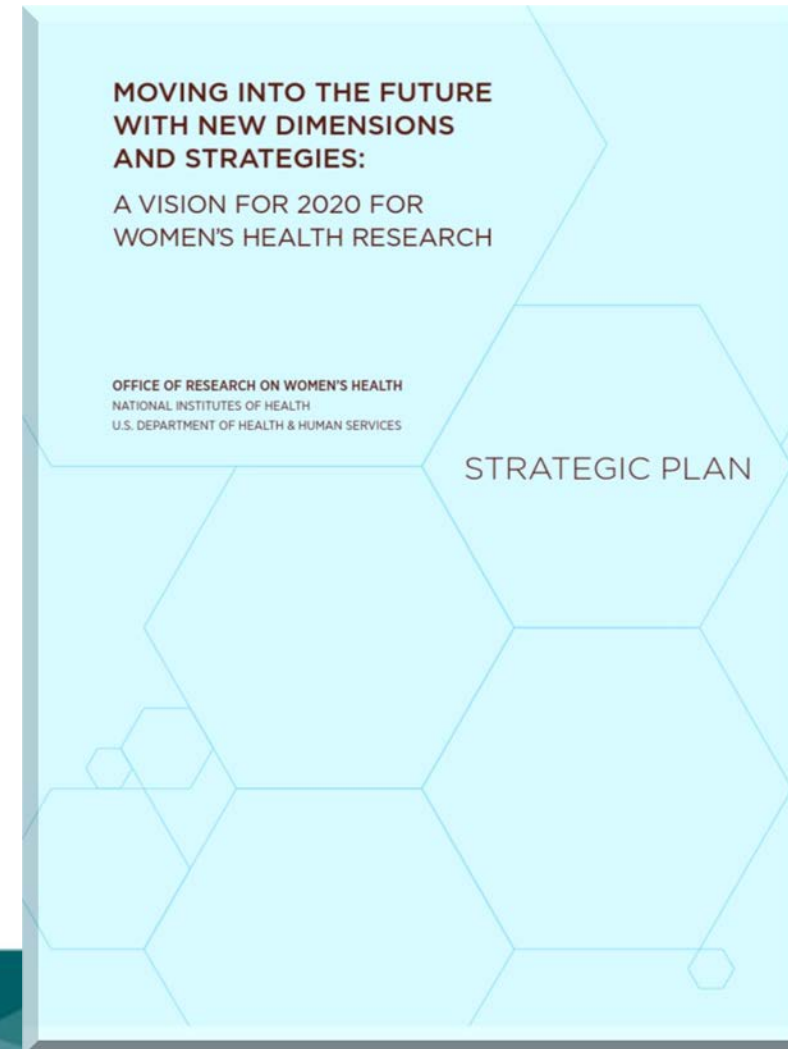
- Multidimensional perspective is complex; difficult to measure; and therefore, limited in biomedical research
- Integration of sex & gender considerations into biomedical research is still evolving
- Each IC establishes its own strategic plan
- ORWH achieves its mission through co-funding



National Institutes of Health
Office of Research on Women's Health

Current Trans-NIH Strategic Plan for Women's Health Research

“Moving into the Future with New Dimensions & Strategies: A Vision for 2020 for Women's Health Research”



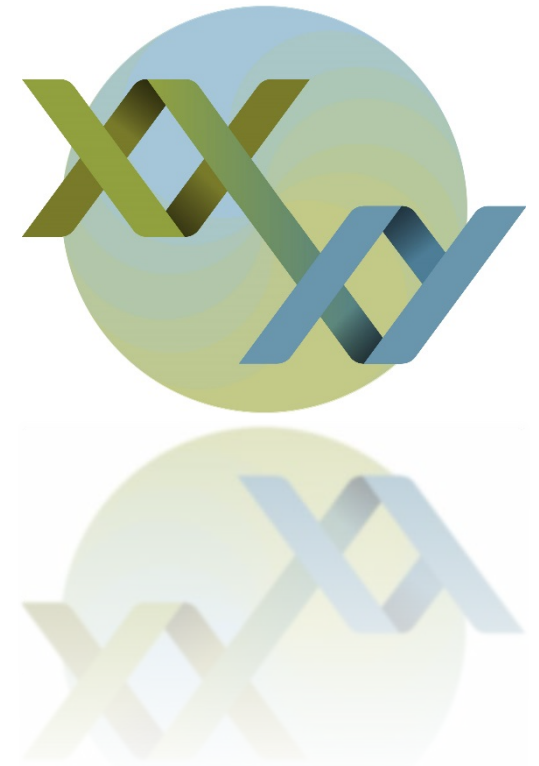
National Institutes of Health
Office of Research on Women's Health

Sex As a Biological Variable (SABV) Policy

“NIH expects that sex as a biological variable will be factored into research designs, analyses, and reporting in vertebrate animal and human studies.”

NOT-OD-15-102*: Consideration of Sex as a Biological Variable in NIH-funded Research

*Effective date: January 25, 2016

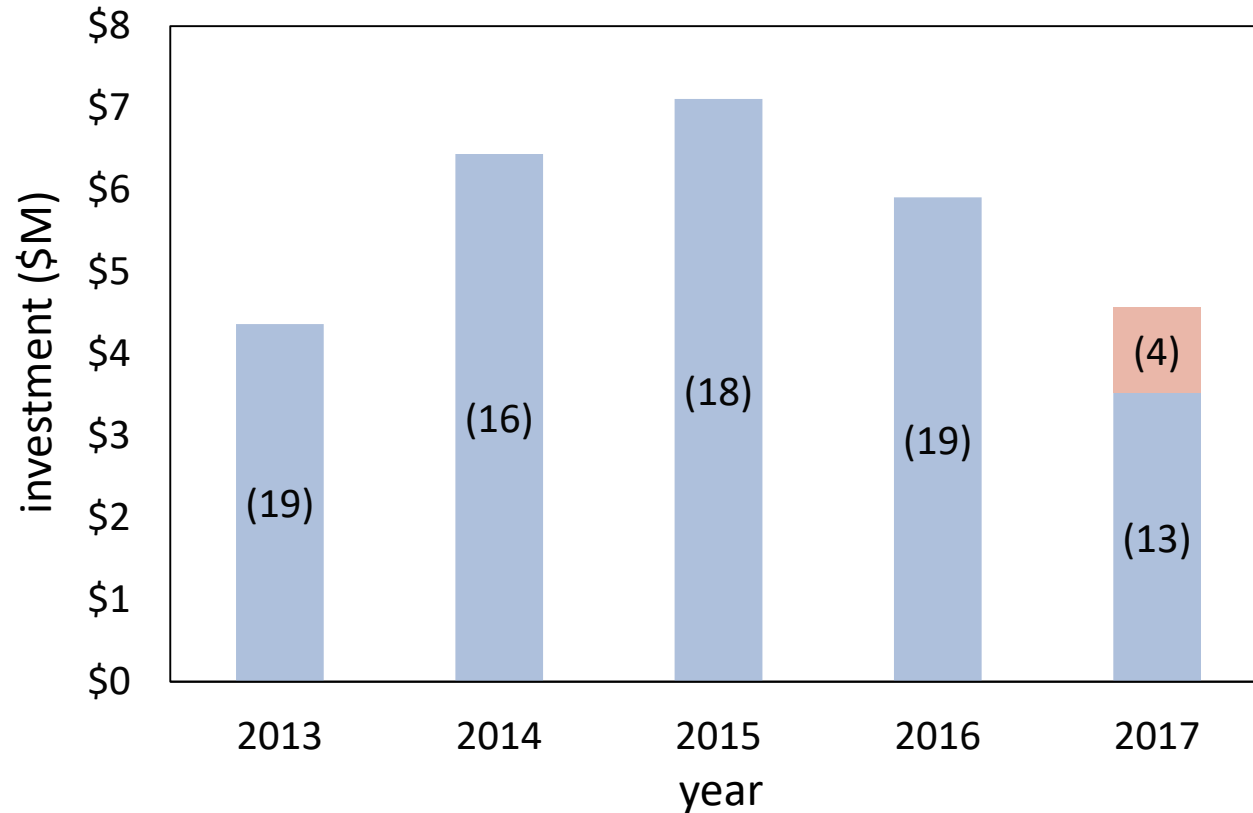


Investment Highlights

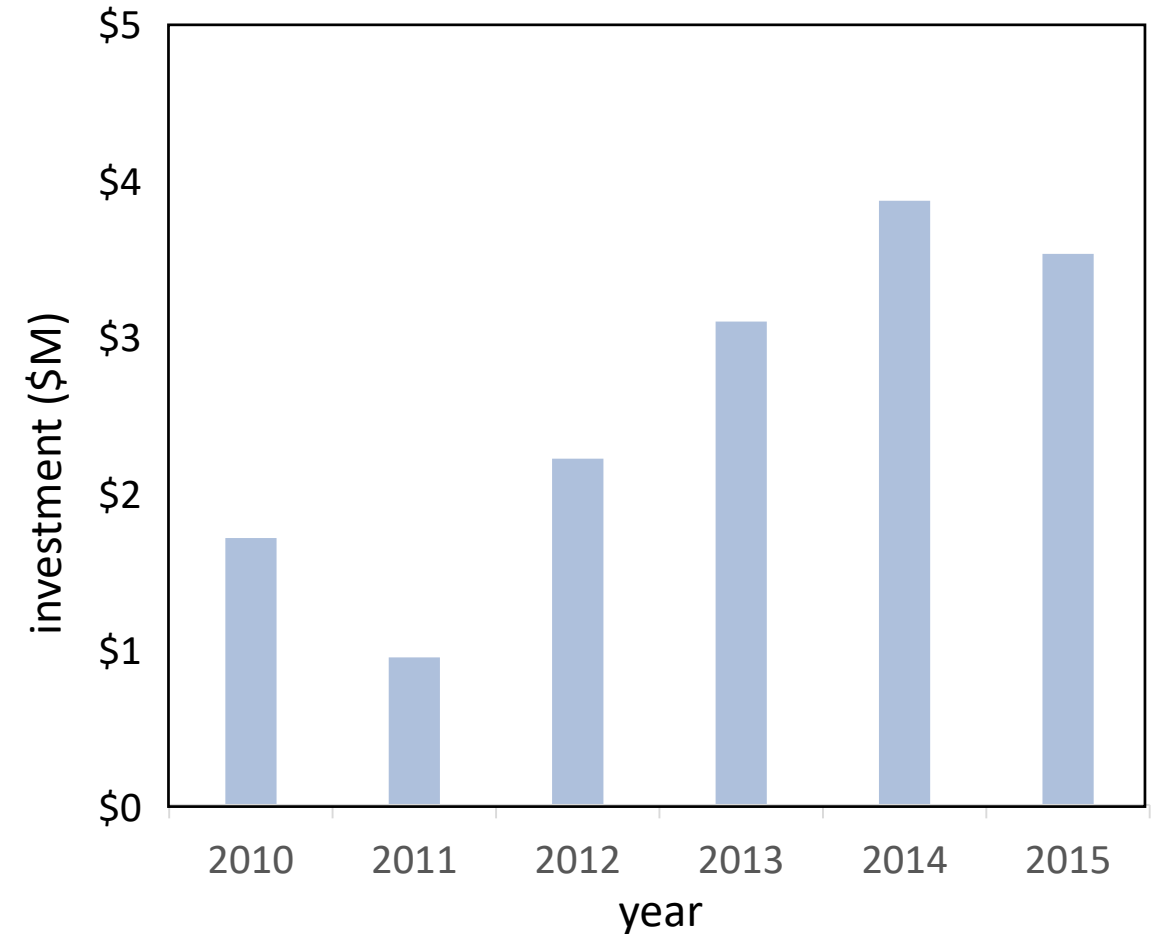
Flagship Admin. Supplements

Sex & Gender

U3

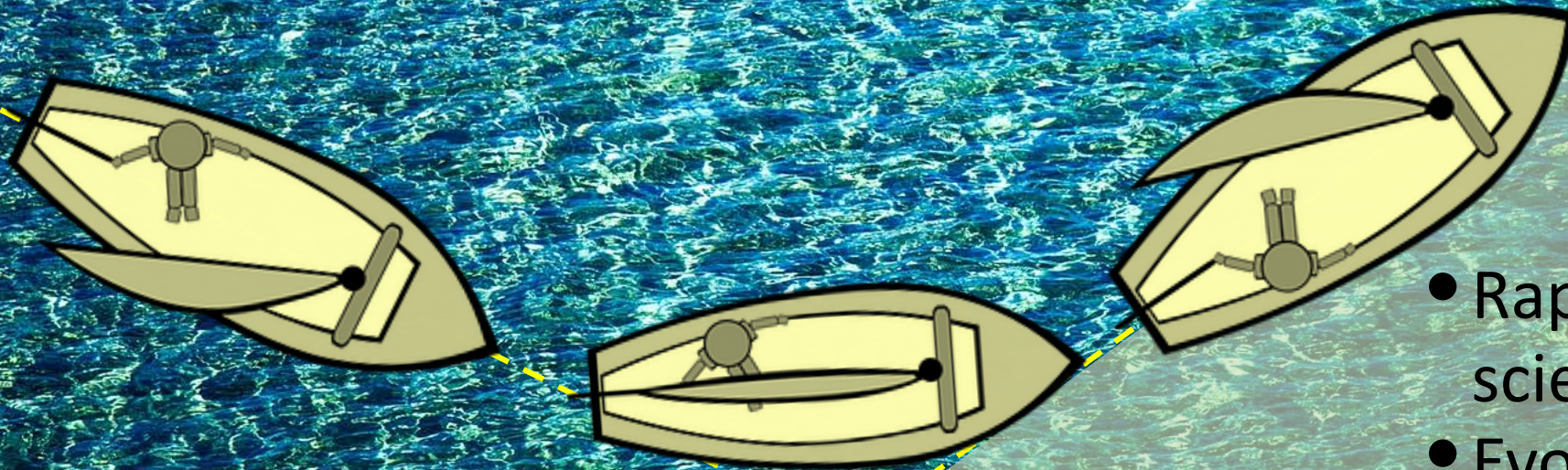


Brain Disorders



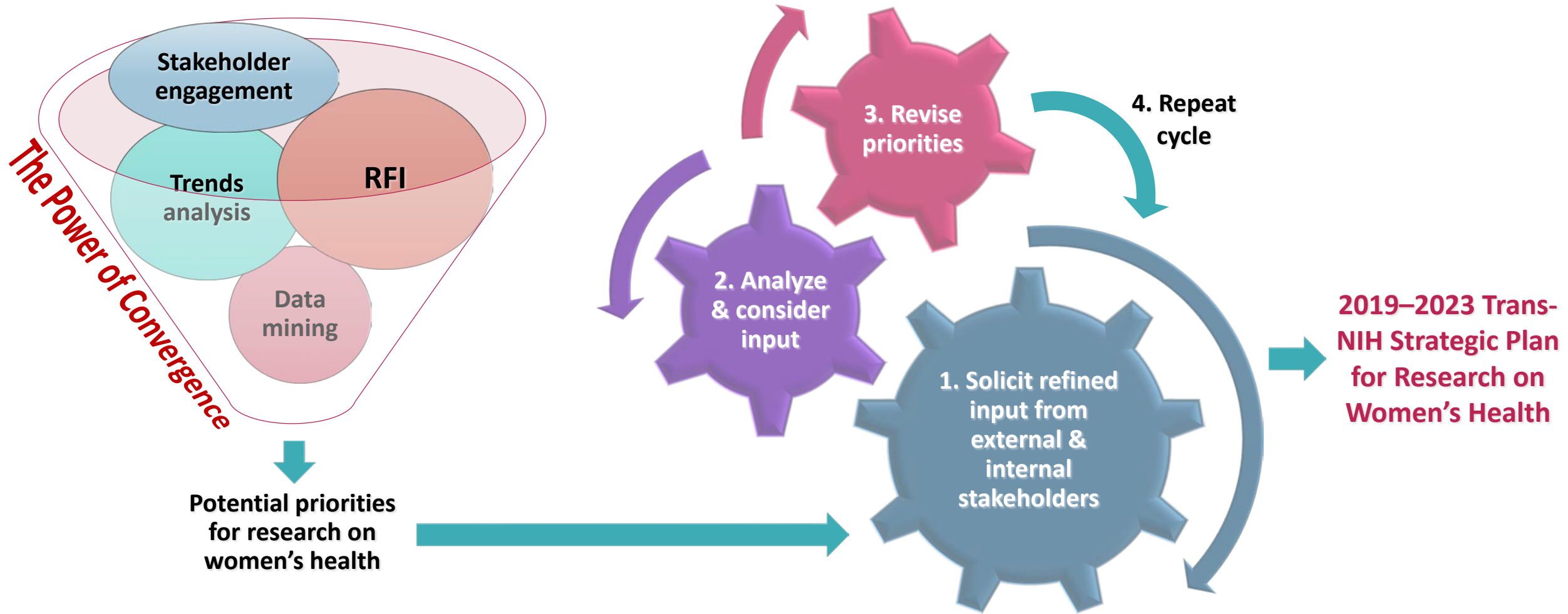
National Institutes of Health
Office of Research on Women's Health

Adjusting Our Course



- Rapid advancement of science & technology
- Evolving public health needs
- Mandates of the 21st Century Cures Act

Strategic Planning Process: multi-resource, iterative approach, with strong focus on stakeholder input



2017

Feb
Mar

Apr

May

Jun

Jul

Aug

Sep

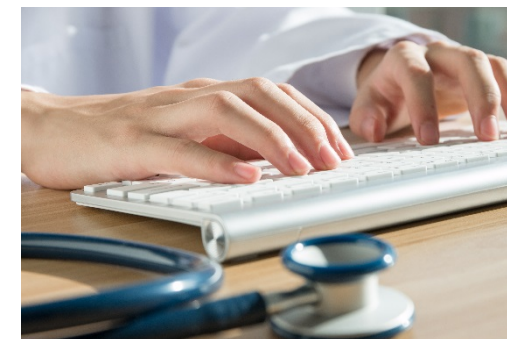
Oct

Nov

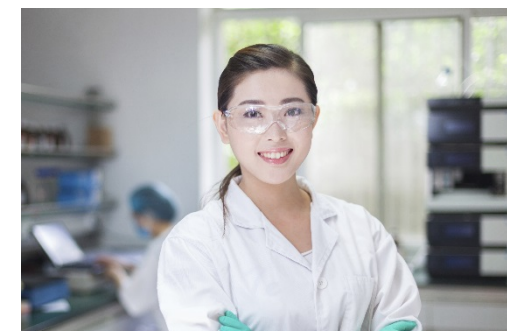
RFI Methods

- Sep. 12 – Nov. 10, 2017
- **Stakeholder engagement:** researchers, policy/advocacy organizations, clinicians, scientific societies, health care, academic, pharma & government agencies
- Online, phone, email, in-person, social media & flyer distribution
- Thematic analysis

Federal Partners



(Pexels, CC0)



ADVOCACY



(Nick Youngson CC BY-SA 3.0)



National Institutes of Health
Office of Research on Women's Health

RFI Results

- 145 responses*
 - ✓ Researcher 46%
 - ✓ Federal 18%
 - ✓ Advocate 17%
 - ✓ Clinician 15%
 - ✓ Other/Unknown 14%
 - ✓ Patient 7%
- 45 broad thematic categories

*Multiple response selection permitted;
consequently, percentages sum to more than 100%.

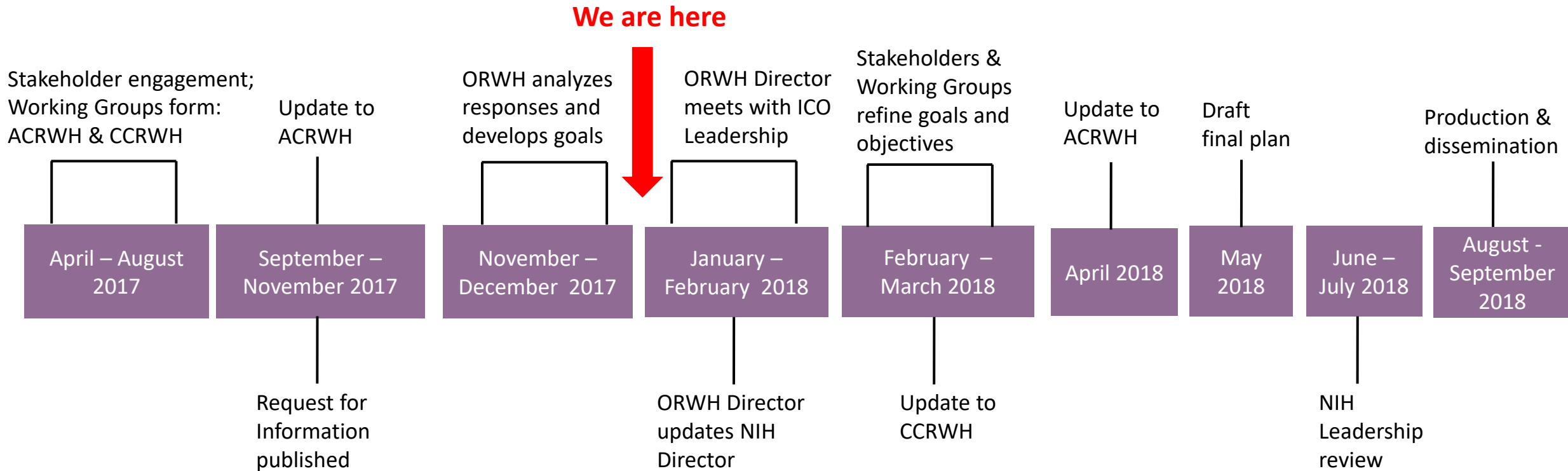


(Max Pixel, CC0)



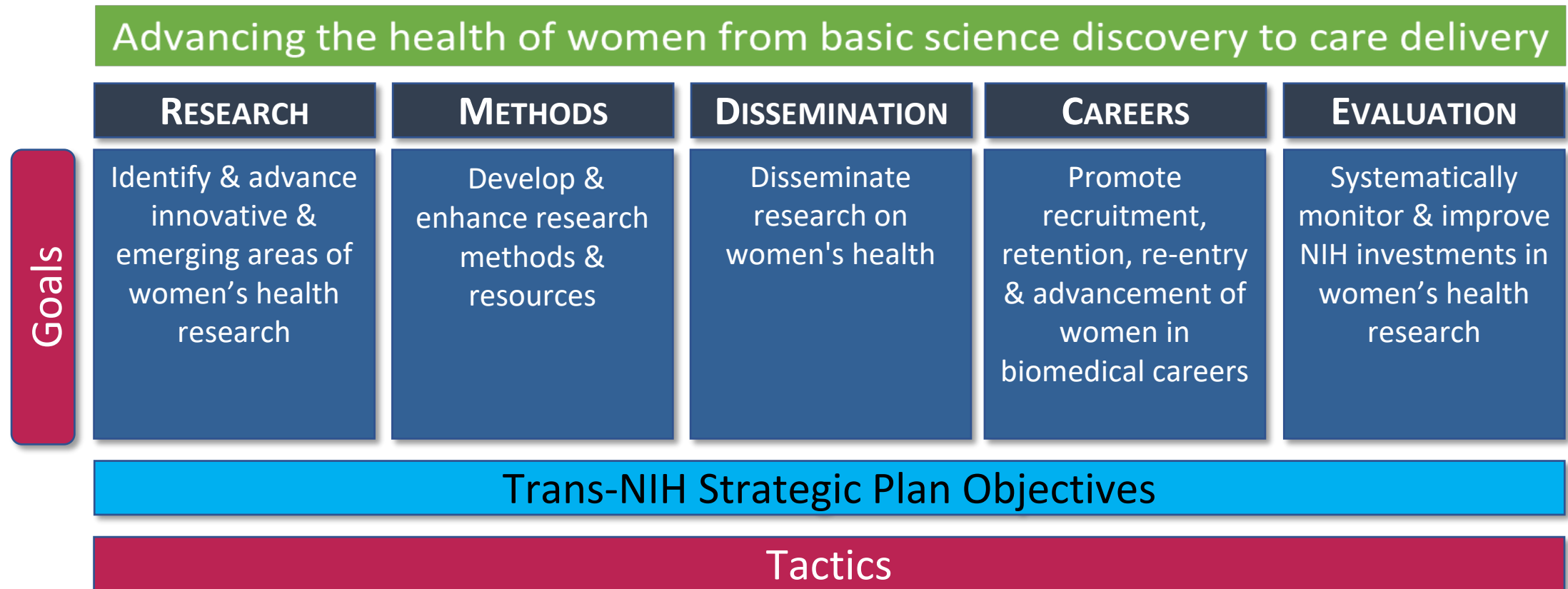
National Institutes of Health
Office of Research on Women's Health

Timeline for FY 2019 – 2023 Trans-NIH Strategic Plan on Women's Health



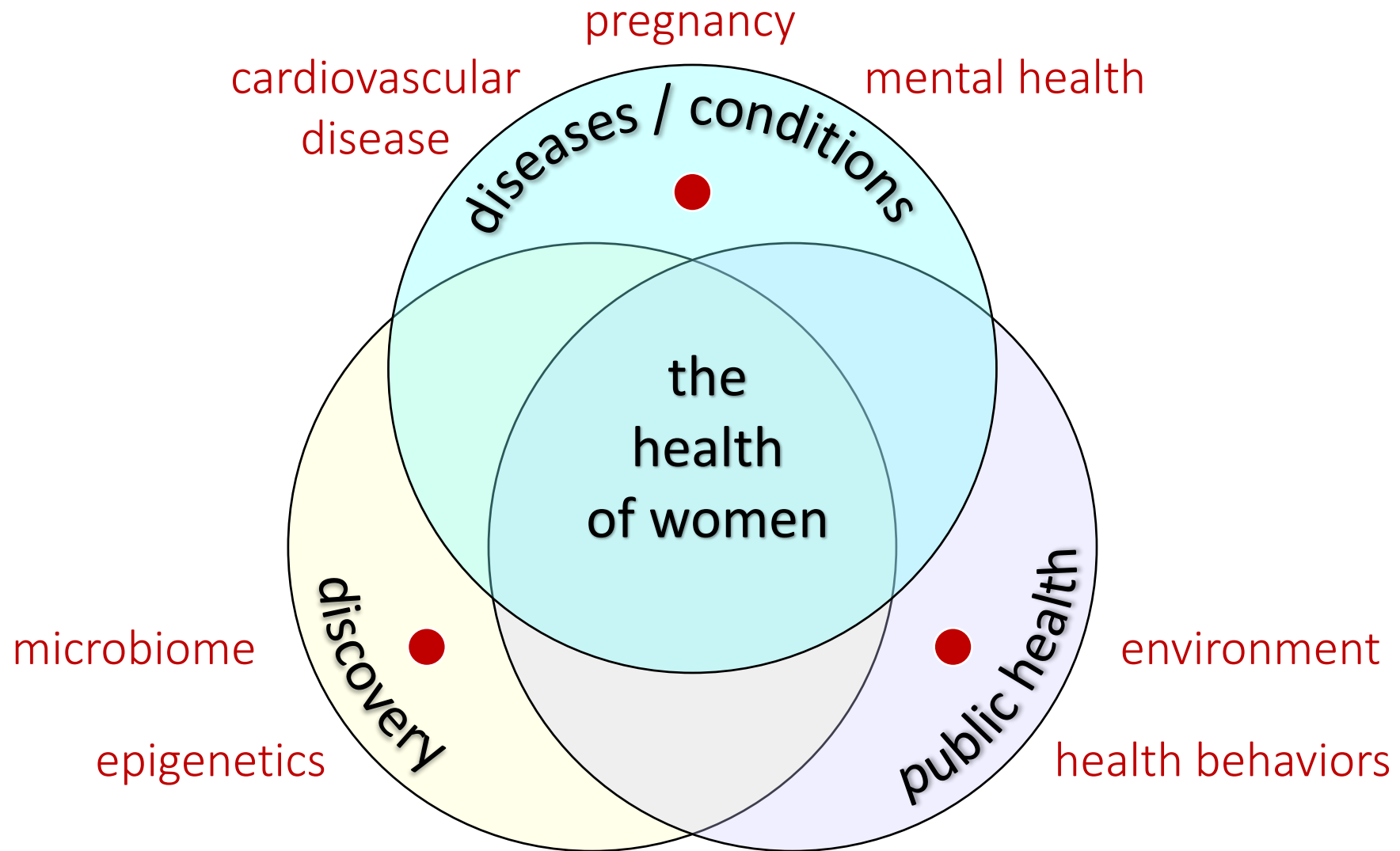
National Institutes of Health
Office of Research on Women's Health

Draft Trans-NIH Strategic Priorities for Women's Health Research



National Institutes of Health
Office of Research on Women's Health

RFI Responses – Research Topic Summary



National Institutes of Health
Office of Research on Women's Health

Strategic Priority #1

RESEARCH

Goal

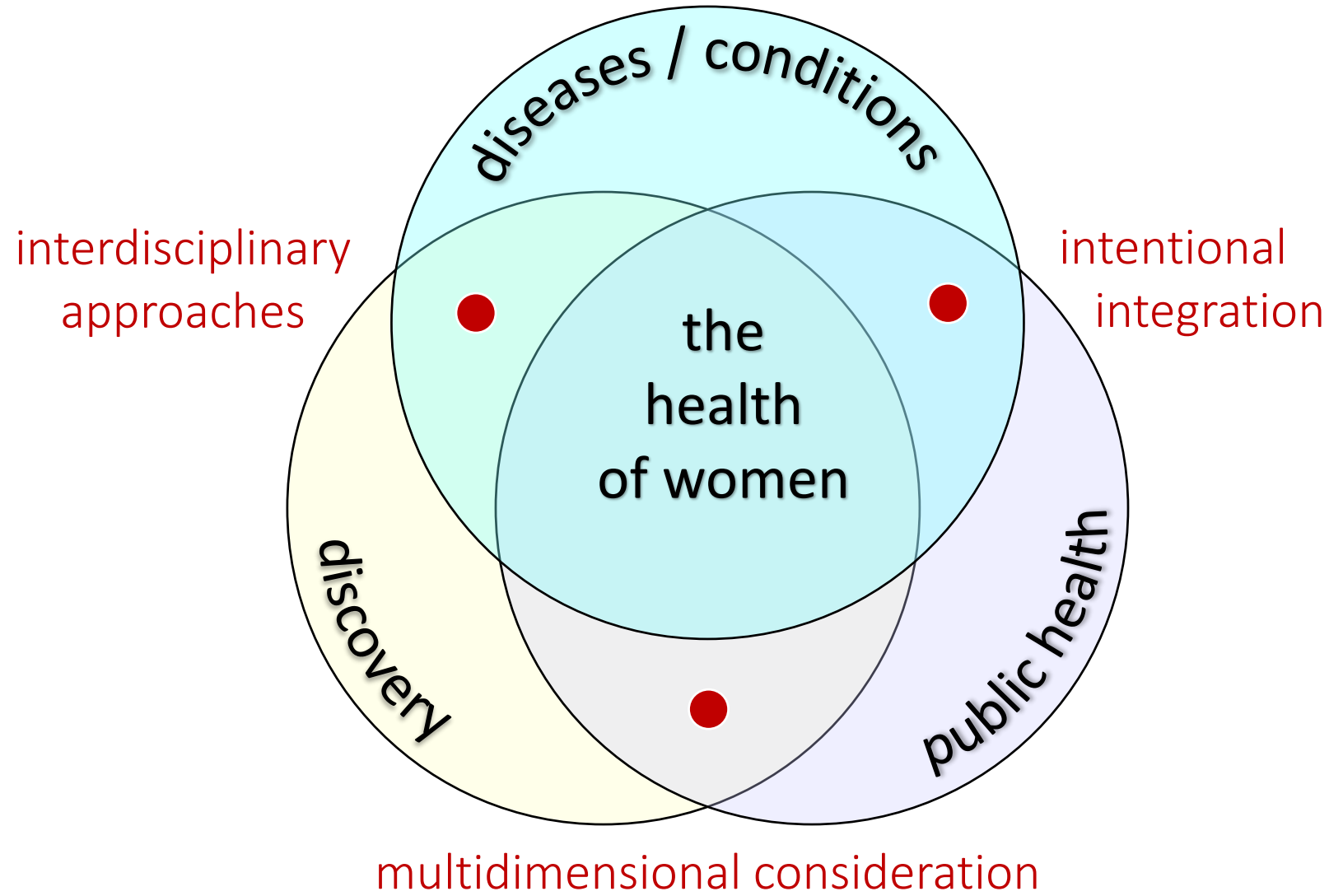
Identify & advance
innovative &
emerging areas of
women's health
research

Tactics

- Support relevant research
- Collaboratively prioritize research areas
- Increase partnerships (ICOs, Federal partners & community)
- Develop & maintain trans-NIH forums
- Integrate into major NIH initiatives (e.g. *All of Us*)



RFI Responses – Prominent Cross-Cutting Themes



National Institutes of Health
Office of Research on Women's Health

Strategic Priority #2

METHODS

Goal

Develop & enhance
research methods
& resources

Tactics

- Expand SABV policy application
- Identify strategies (e.g. study designs) to fully integrate sex & gender into research
- Provide advanced ed. on sex & gender
- Identify opportunities for data sharing
- Leverage big data sources (e.g. CDC)



National Institutes of Health
Office of Research on Women's Health

Strategic Priority #3 DISSEMINATION

Goal

Disseminate research on women's health

Tactics

- Identify strategies to improve sex specific results reporting (e.g. journal guidelines)
- Develop status report on US women's health
- ORWH seminars, meetings & SIG
- Partner on Trans-NIH meetings
- Improve coding of research on the health of women



Strategic Priority #4 CAREERS

Goal

Promote recruitment, retention, re-entry & advancement of women in biomedical careers

Tactics

- Promote positive institutional & cultural change among men & women in STEM
- Lead efforts to discuss barriers & track progress of women in STEM careers
- Provide strategies to support women advancing to their full potential in biomedical careers
- Financially support programs



National Institutes of Health
Office of Research on Women's Health

Strategic Priority #5

EVALUATION

Goal

Systematically monitor & improve NIH investments in women's health research

Tactics

- Assess progress (e.g. inclusion & research findings)
- Provide routine updates to NIH & Congress
- Interpret policies & develop business processes
- Provide strategies to ensure inclusion of all groups of girls & women in research



(Kevin McCoy, 2004; CC BY-SA 2.0)



National Institutes of Health
Office of Research on Women's Health

Next Steps

- ❑ Communicate with ICO leadership
- ❑ Partner with ICOs to establish Trans-NIH Women's Health Strategic Planning Group
- ❑ Refine research priorities & objectives in collaboration with ICOs, ACRWH & CCRWH
- ❑ Develop dissemination plan
- ❑ Design implementation plan with metrics of success



(Pixabay, CC0)



National Institutes of Health
Office of Research on Women's Health

Thank You!



National Institutes of Health
Office of Research on Women's Health