



# Data Science at NIH

NLM Vision and Actions to Make It Happen

Patricia Flatley Brennan, RN, PhD  
January 27, 2017



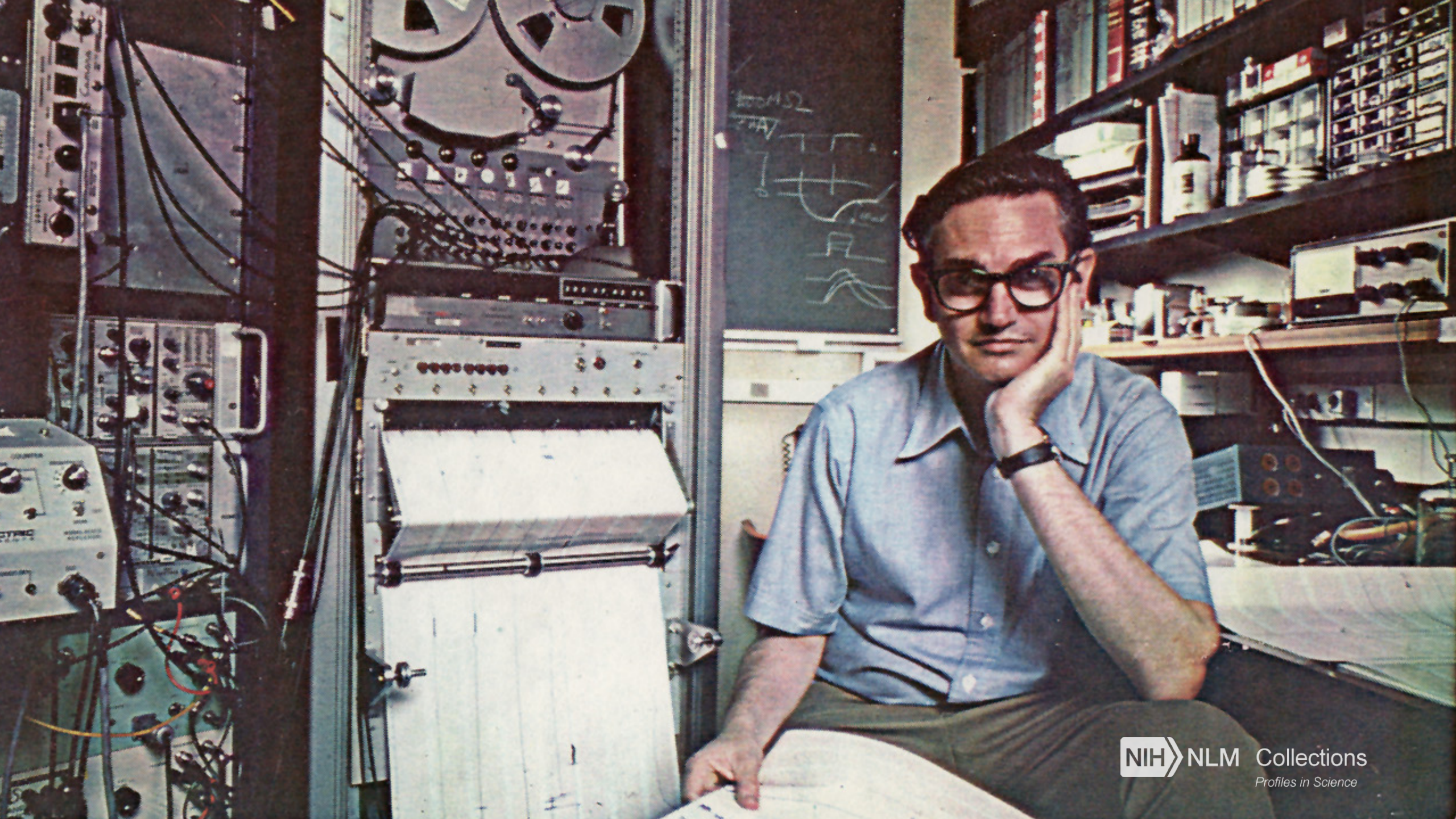












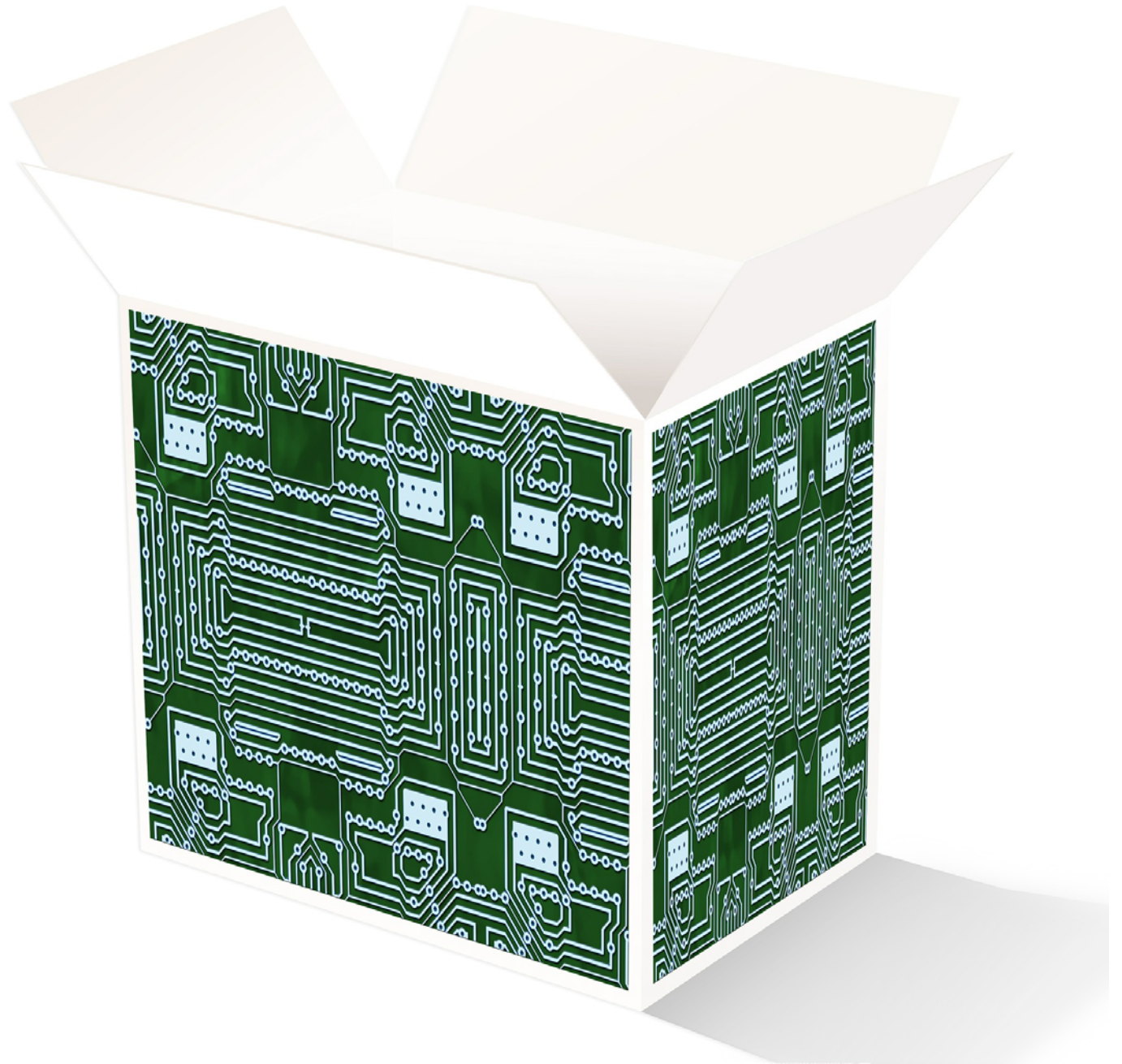








Findable  
**A**ccessible  
Interopera  
**R**eusable





NIH NLM





# THE LIBRARY

---

a dynamic  
interplay of  
medicine &  
information





# Assess Value

Create mechanisms to:

- Determine high value data sets
- Forecast their costs
- Set preservation strategies
- Anticipate utilization

Preserve





# Promote Standards



LOINC

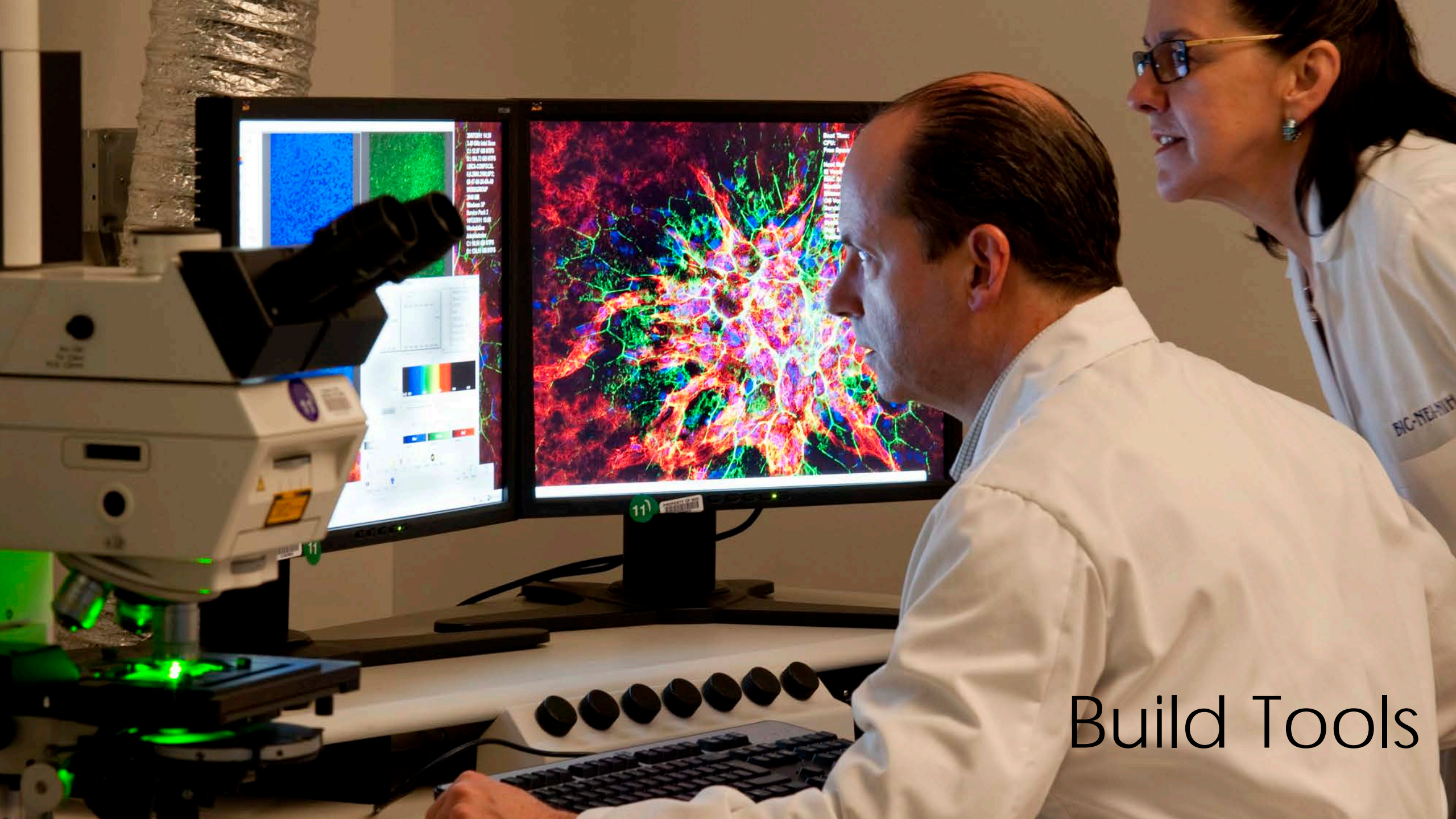
SNOMED CT

UMLS

RxNorm

VSAC





Build Tools

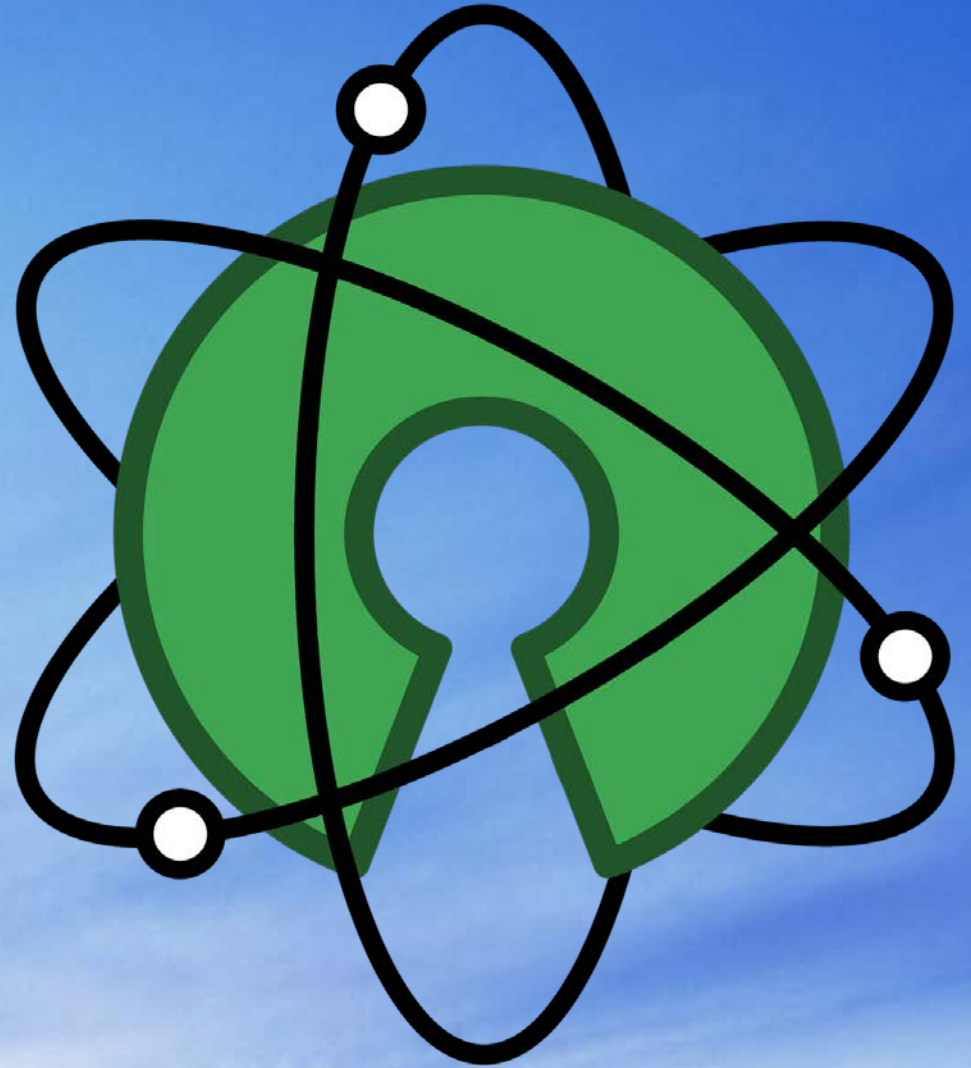




Promote training



Support  
Open Science



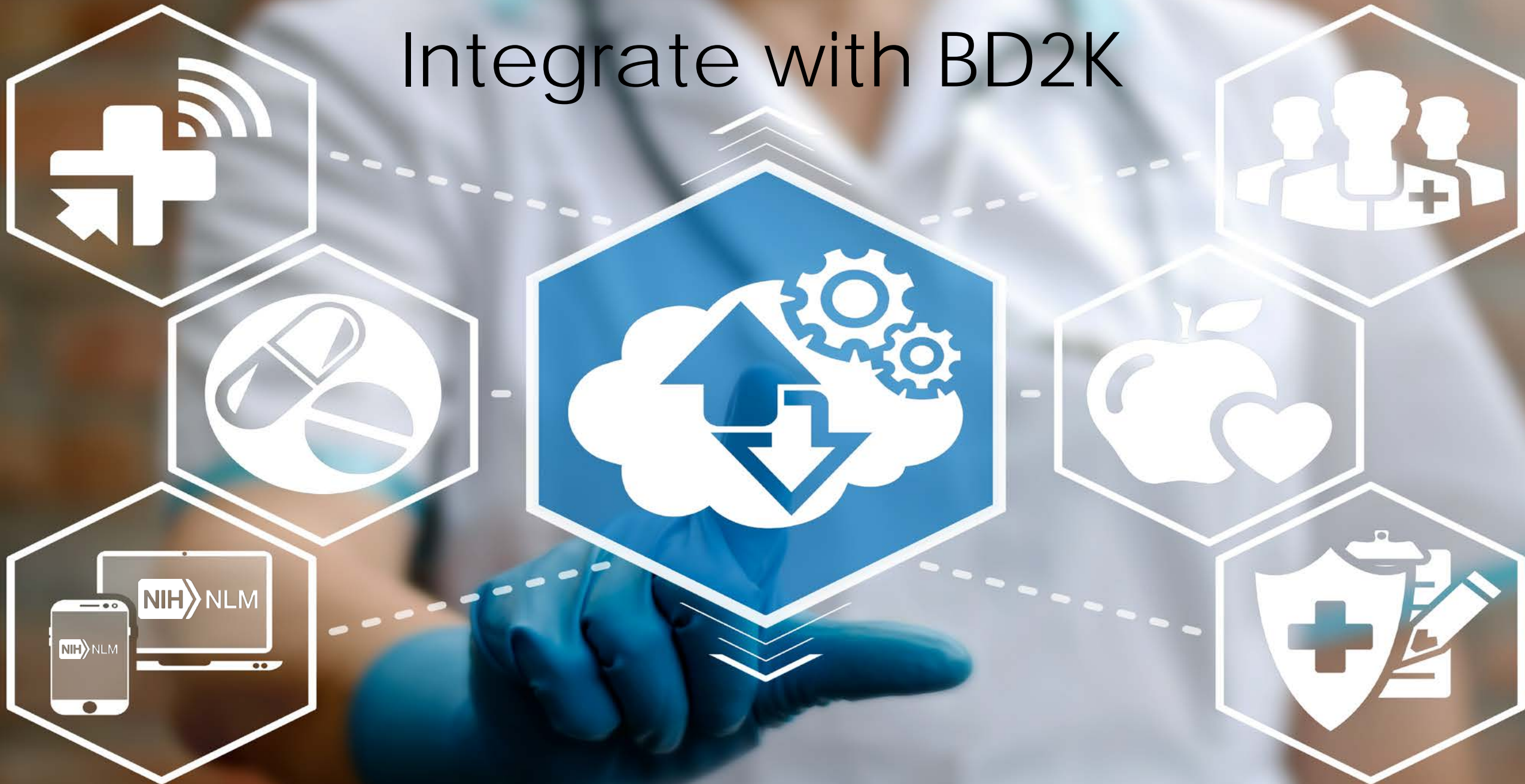




Engage with others



# Integrate with BD2K





Establish structure







# BD2K portfolio

Training

Centers of Excellence

Cooperative Agreements

Cloud Pilots



Data Science  
Community



BD2K

*Big Data to Knowledge*

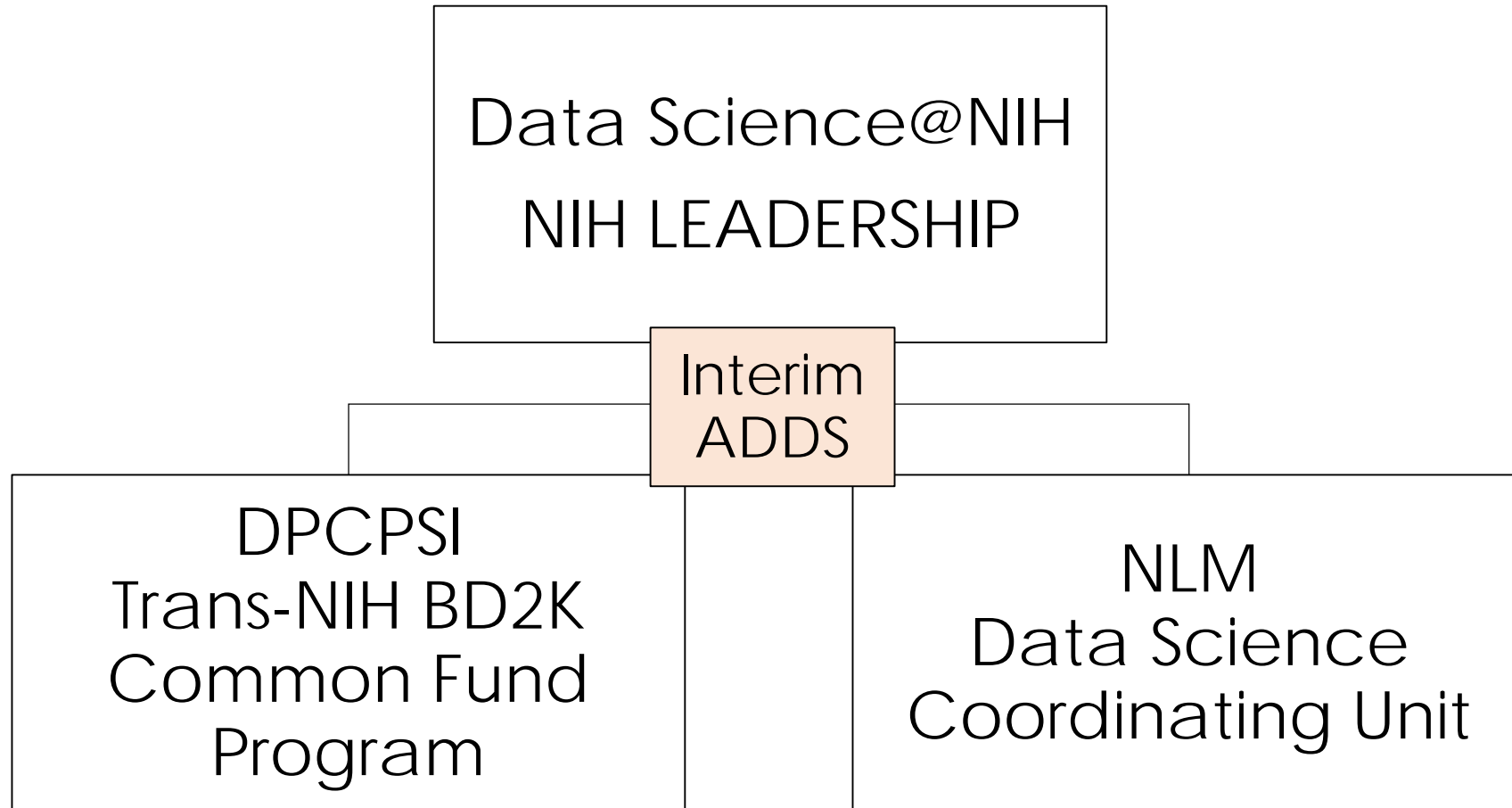


Commons



# Proposed NIH Data Science Reorganization

---







Patti.Brennan@nih.gov



@NLMdirector



[nlmdirector.nlm.nih.gov](http://nlmdirector.nlm.nih.gov)