

# NIH Director's Update

Council of Councils  
April 21, 2025

**Jay Bhattacharya, M.D., Ph.D.**  
Director, National Institutes of Health



# Topics for Today

- My background
- Leadership transitions and other changes
- My vision for NIH



**Stanford**  
University





# Leadership transitions and other changes

# NIH Initiative: Understanding ASD

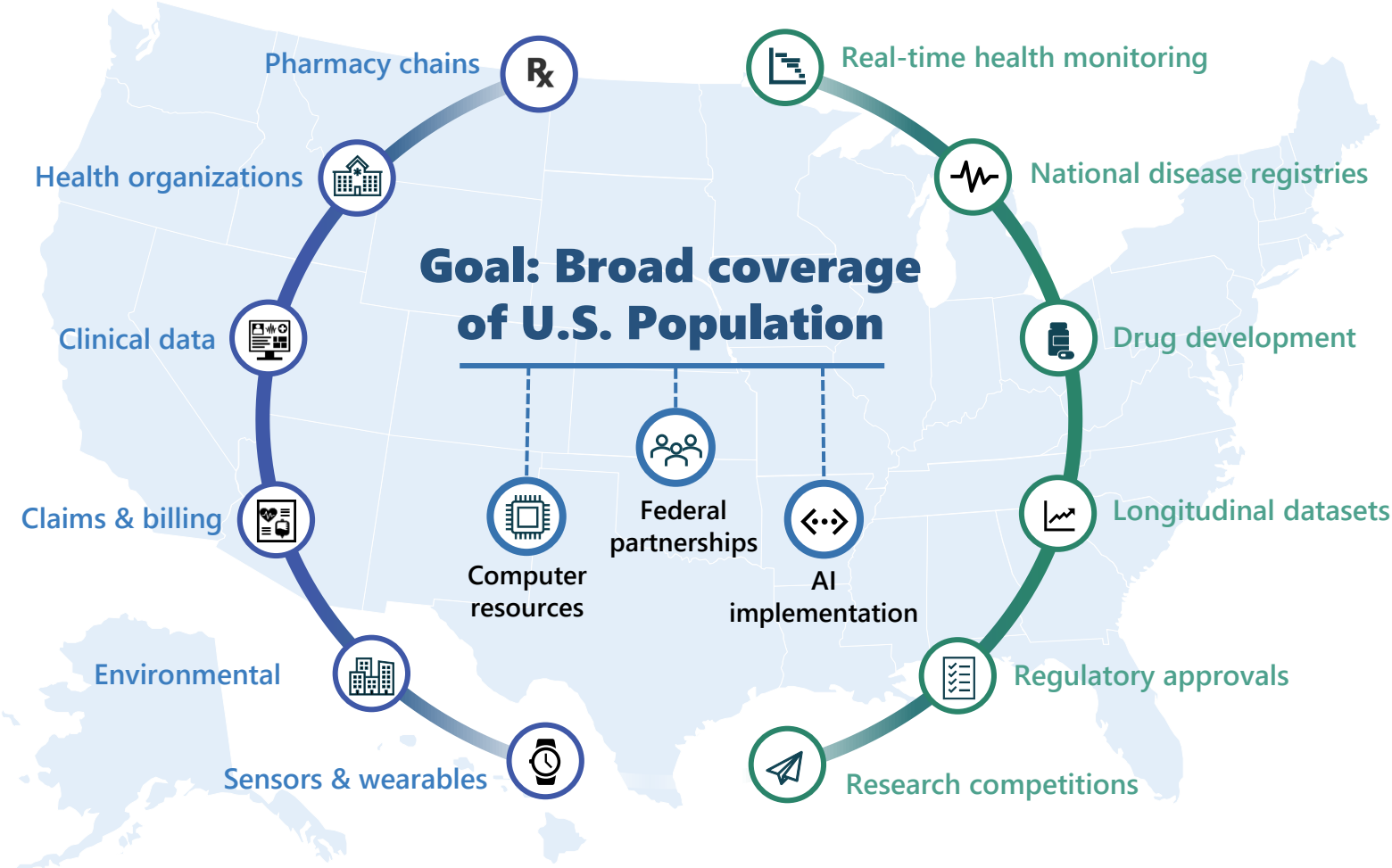
- NIH is launching an Initiative
- Integrating diverse data enabling researchers to examine complex factors influencing ASD rates.



# NIH Real-World Data Platform

*Accelerating discovery*

**Data Sources**



**Opportunities**

# Private and Public Data; Protection of Patient Confidentiality; Researcher Access



## Partnerships

- Build partnerships across HHS and with external stakeholders
- Expand data sources for real-world evidence
- Support studying chronic disease and autism



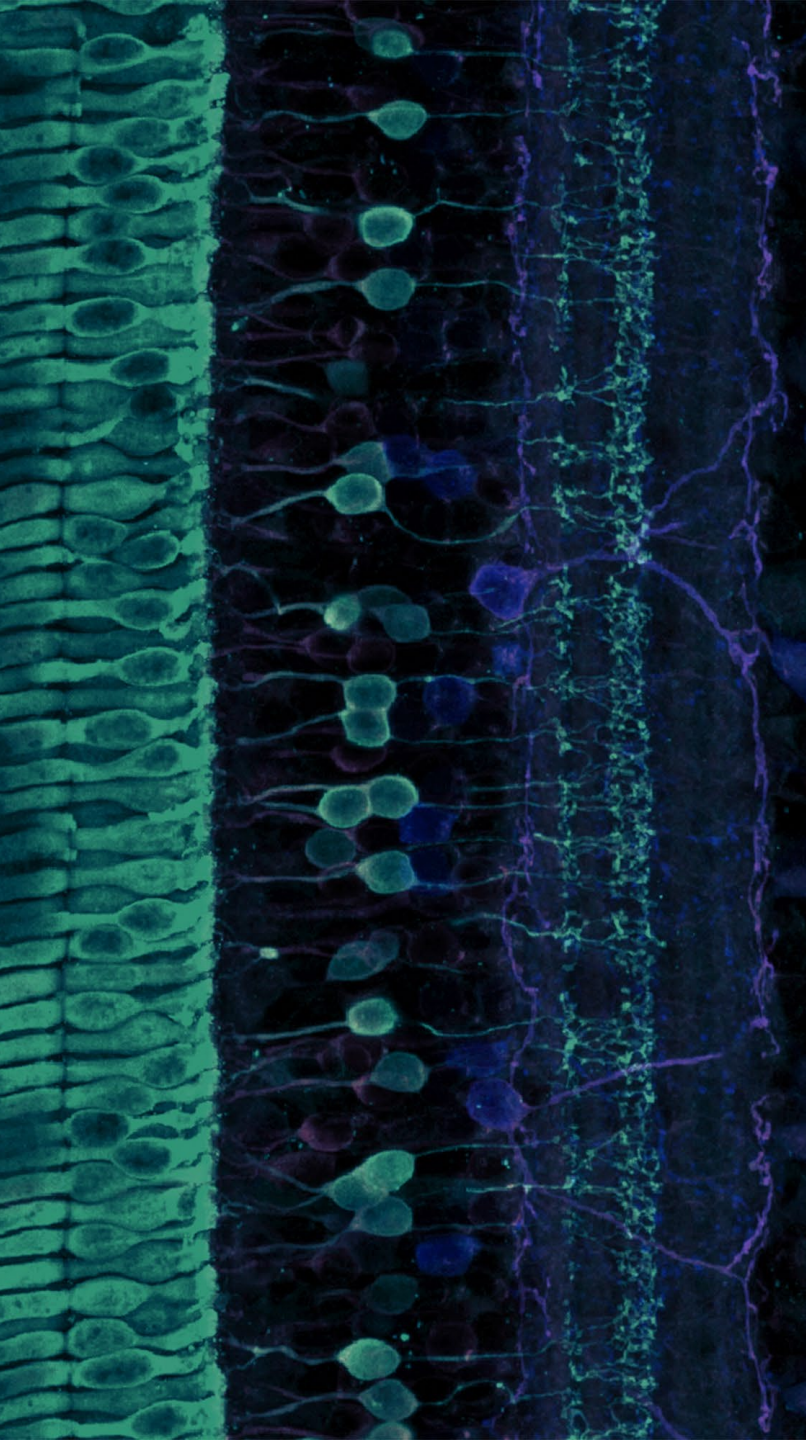
## Development

- Leverage existing NIH programs to fast-track progress
- Protect patient confidentiality



## Timeline

- Define go/no-go milestones and progress checkpoints
- Pilot the platform within six months of project launch



# Building Blocks to Improving Health

A blueprint for the future of biomedical research



# Improve Population Health

NIH must address the health needs of the American people and find better ways to prevent, treat, and cure chronic diseases.



# Ensure reliable results

NIH-supported science should be replicable, reproducible, and generalizable.



# Make big advances

NIH must invest in innovation, and embrace new technologies, new ideas, and new approaches to old problems.



# Maintain safety and transparency

Research should meet the highest ethical standards and should not endanger human populations.



# Encourage academic freedom

NIH will foster a culture in which scientists can express disagreement respectfully.



**Novel biomedical  
discoveries that enhance  
health and lengthen life are  
more vital than ever to our  
country's future.**

Questions?



**National Institutes of Health**

*Turning Discovery Into Health*



