



National Institute on Aging's (NIA) Commitment to SGM Research

Melissa S. Gerald, PhD

Division of Behavioral and Social Research

National Institute on Aging

SGM Health Research Regional Workshop 2024

Birmingham Alabama

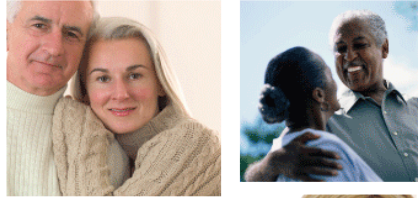
NIA Mission



Leads a broad scientific research effort to understand the nature of aging and to extend the healthy, active years of life.

- Support and conduct genetic, biological, clinical, behavioral, social, and economic research related to **the aging process**, diseases and conditions associated with **aging**, and other special problems and needs of older Americans.
- Foster the development of research and clinician scientists in aging.
- Provide research resources.
- Communicate information about aging and advances in research on aging to the scientific community, health care providers, and the public.

NIA's Extramural Research Divisions



Behavioral and Social Research



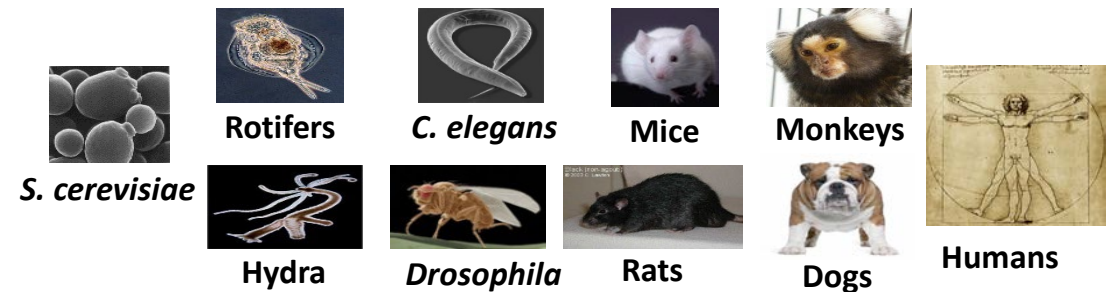
Neuroscience



Geriatrics and Clinical Gerontology



Aging Biology



NIA Cross-cutting Themes

NIA Health Disparities Research Framework

PRIORITY POPULATIONS

- Hispanics/Latinos
- American Indians/Alaskan Natives
- Blacks/African Americans
- Asian Americans
- Native Hawaiians and Other Pacific Islanders
- Socioeconomically Disadvantaged Populations
- Rural Populations
- Disability Populations
- Sexual and Gender Minorities

NIA Strategic Directions, Goal F

Understand health disparities related to aging and develop strategies to improve the health status of older adults in diverse populations.

NIA Health Disparities Research Framework



PRIORITY POPULATIONS

Environmental	Sociocultural	Behavioral	Biological
<u>Geographical and Political Factors</u>	<u>Cultural Factors</u>	<u>Coping Factors</u>	<u>Physiological Indicators</u>
<u>Socioeconomic Factors</u>	<u>Social Factors</u>	<u>Psychological Risk/Resilience</u>	<u>Genetic Stability</u>
<u>Health Care</u>	<u>Psychological Factors</u>	<u>Health Behaviors</u>	<u>Cellular Function and Communication</u>

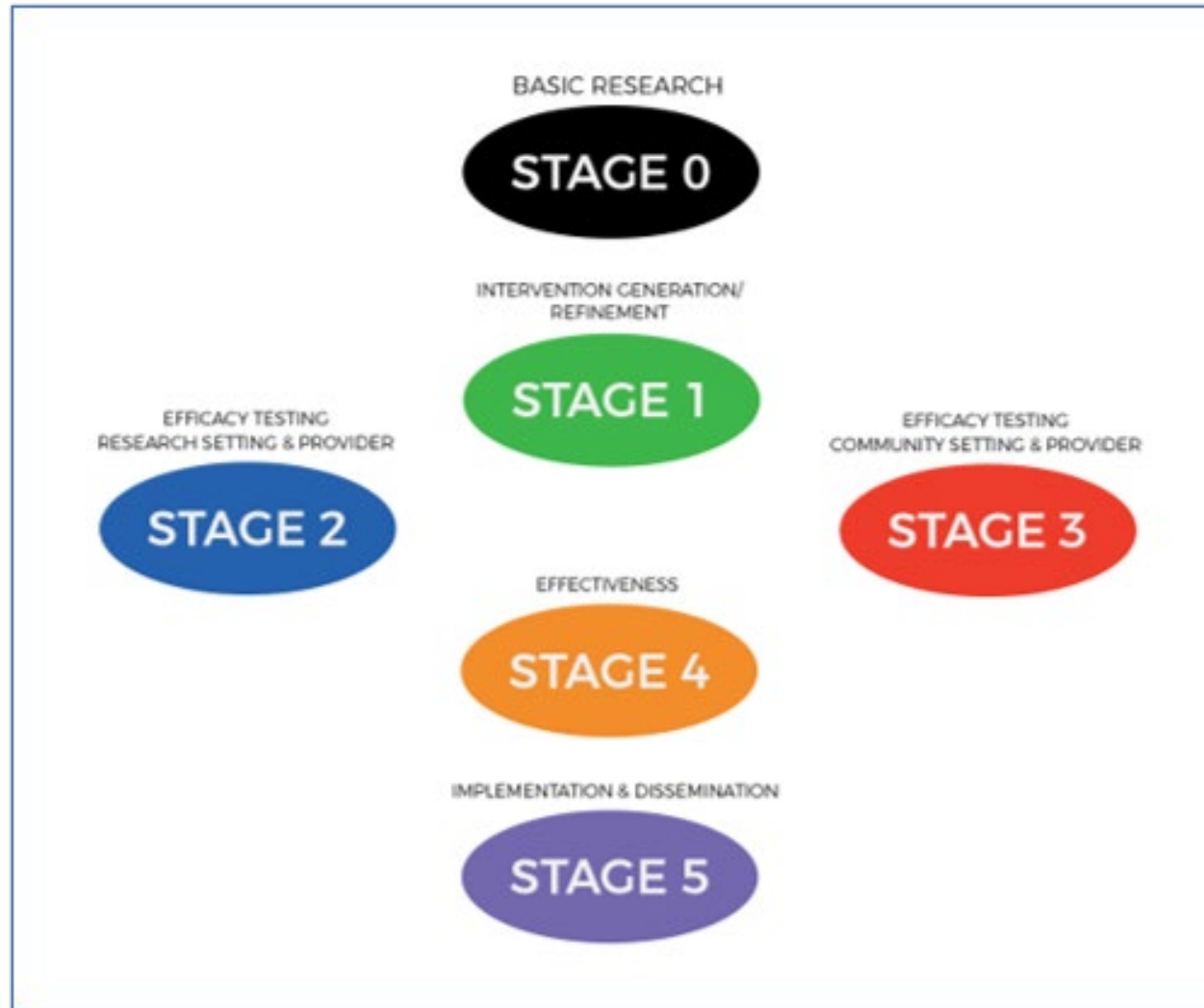
LIFECOURSE PERSPECTIVE

NIA Cross-cutting Themes

Alzheimer's Disease and Related Dementias (AD/ADRD)

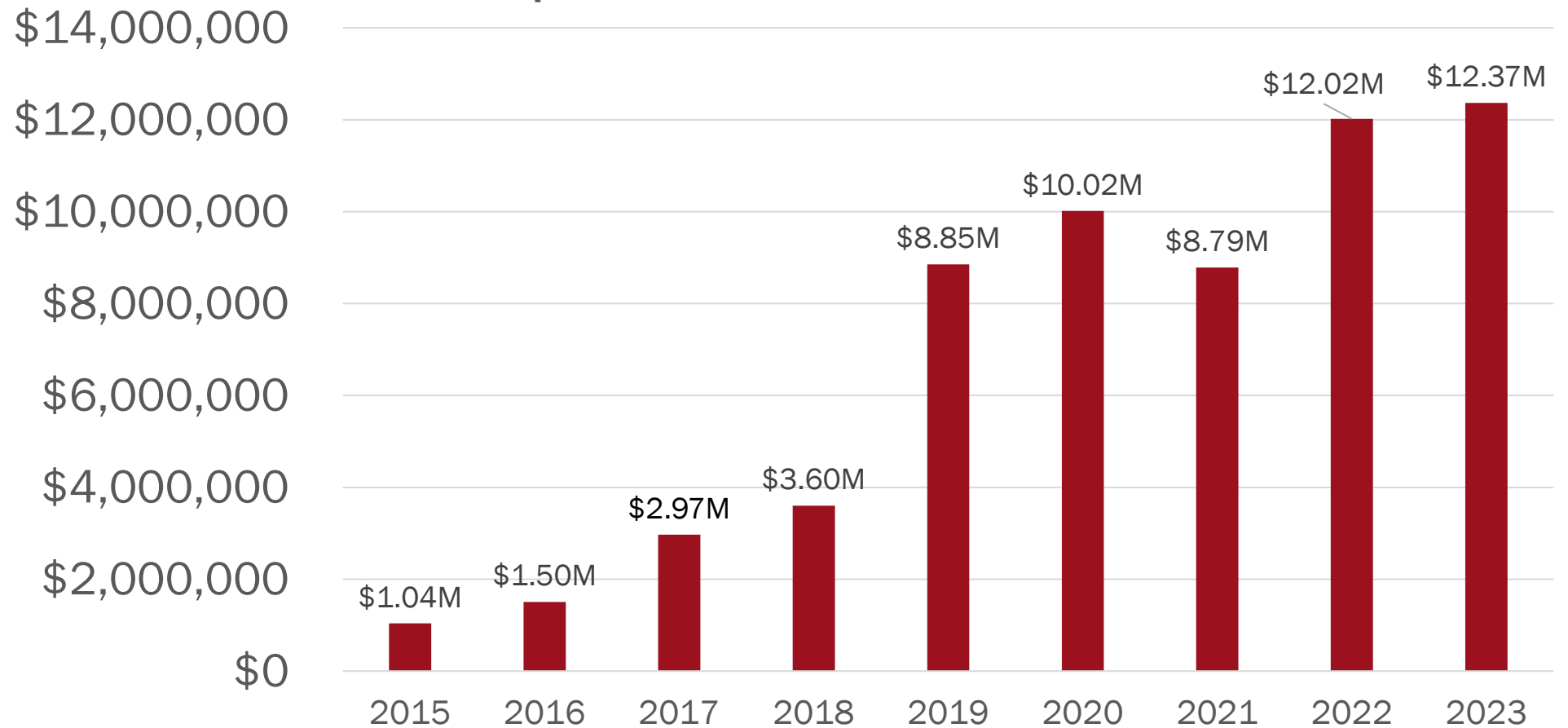


NIH Stage Model for Behavioral Intervention Development



Growth in NIA's Investments in SGM Research & Training

NIA Portfolio: Sexual and Gender Minorities (SGM/LGBT*) Reported \$ FY2015-FY2023



NIA-supported Activities

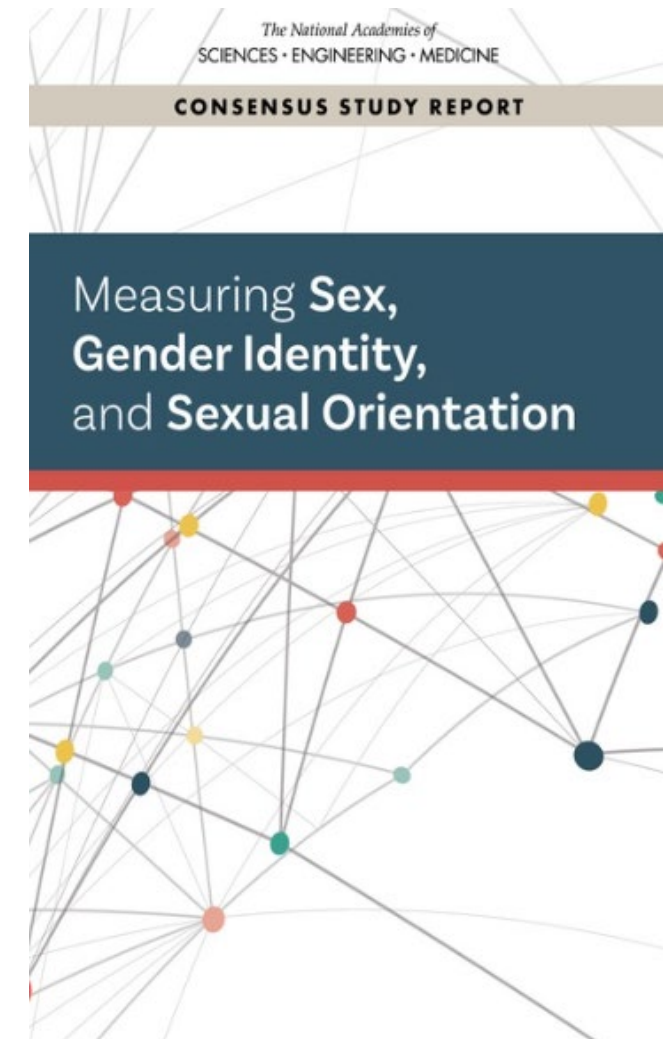


BISEXUAL HEALTH
Research Workshop

September 23, 2019
*Identifying Research Opportunities in
Bisexual Health Research*



SCIENTIFIC WORKSHOP ON
VIOLENCE & *related health
outcomes in*
SEXUAL & GENDER MINORITY COMMUNITIES



The National Academies of
SCIENCES • ENGINEERING • MEDICINE

CONSENSUS STUDY REPORT

Measuring **Sex,**
Gender Identity,
and **Sexual Orientation**



Scientific Workshop on Expanding the Evidence Base in
GENDER-AFFIRMING CARE
for Transgender & Gender Diverse Populations



ISSN 2225-6092 Volume 10 Supplement 1 2021

LGBT
HEALTH

Violence and Related Health Outcomes
in Sexual & Gender Minority Communities

Mary Ann Liebert, Inc. & Publishers
www.liebertpub.com/lgbt

NIH National Institutes of Health

NIH SGM Research Investigator Awards Program



Karen Fredriksen Goldsen, Ph.D.
2019 Distinguished Investigator
Award Recipient



Jason Flatt, Ph.D., MPH
2020 Early-Stage Investigator
Award Recipient



Walter Bockting, Ph.D., LP
2023 Distinguished
Investigator Award Recipient

Selected NIA-participating SGM-related Research NOSIs & NOFOs

NOT-MD-22-012: NOSI: Research on the Health of SGM Populations	NOT-OD-22-166: NOSI Research on the Health of Bisexual and Bisexual+ People	NOT-OD-23-166: NOSI: Research on Family Support and Rejection in the Health and Well-Being of SGM Population	PAR-22-093: Research on Current Topics in Alzheimer's Disease and Its Related Dementias (R01 - CT Optional)	PAR-24-091 / PAR-24-092): Multidisciplinary Studies of HIV/AIDS and Aging (R21, R01)
RFA-OD-22-028: The Intersection of Sex and Gender Influences on Health and Disease (R01 CT Optional)	PAR-23-112: Addressing the Impact of Structural Racism and Discrimination on Minority Health and Health Disparities (R01 – CT Optional)	NOT-AG-24-004: U.S. Health in the International Perspective	PAR-22-094: Research on Current Topics in Alzheimer's Disease and Its Related Dementias (R21 CT Not Allowed)	PAR-24-109: Long-Term Effects of Disasters on Healthcare Systems in Populations with Health Disparities (R01 - CT Optional)

Examples of Potentially-relevant Networks

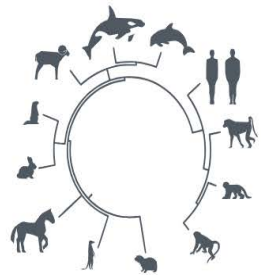


LINC-AD

Interdisciplinary Network on Rural Population Health and Aging



**Network on Life Course and
Health Dynamics & Disparities
in 21st Century America**



**Animal Models for the Social Dimensions
of Health and Aging Research Network**



**The Research Network On The Determinants Of Life Course
Capabilities And Outcomes**

<https://www.nia.nih.gov/research/dbsr/behavioral-and-social-research-networks>

NIA Center Programs on Aging and AD/ADRD

ROYBAL
Center For
Translational
Research



RCMAR
RESOURCE CENTERS FOR
MINORITY AGING RESEARCH
NATIONAL COORDINATING CENTER



NIA IMPACT
COLLABORATORY
TRANSFORMING DEMENTIA CARE



Alzheimer's Disease Center

National Institute on Aging HEERSINK SCHOOL OF MEDICINE

Alzheimer's Disease
Research Center



Centers on the
Demography &
Economics of Aging and
Alzheimer's Disease and
AD/ADRD

a₂ COLLECTIVE

Artificial Intelligence
and Technology
Collaboratories (AITC)
for Aging Research



OAIC National Coordinating Center
Claude D Pepper Older Americans Independence Centers



NATHAN SHOCK CENTERS
OF EXCELLENCE IN THE
BASIC BIOLOGY OF AGING

UAB
THE UNIVERSITY OF
ALABAMA AT BIRMINGHAM

NIA Diversity Supplements

- For people from a background [underrepresented in the biomedical sciences](#), apply for a supplement to an NIA research or Center project grant to support a new lab member Candidate career level: high school through early career faculty.
- Parent grant must have at least two years remaining of active status at time of application.

Requirements

Candidates must be U.S. citizens or permanent residents.

Financials

Budget varies based on career level of candidate.

Due Dates

Applications reviewed on a rolling basis. Maximum Award duration 2 years.

Tips about NIA's Programmatic Interests

- SGM research is funded in all four Research Divisions
- Life course Perspective
- Quantitative focus; mixed-methods welcomed
- Mechanism-focused approach to behavioral intervention development
 - [NIH Science of Behavior Change](#) and
 - [NIH Stage Model](#)
- National and Cross-national research welcomed

NIA Butler-Williams Scholars Program



- Interactions with NIA Program Staff
- Leading Aging Researchers
- Mock Peer Review
- Networking

- **Location:** NIH Campus, Bethesda, MD
- **Date:** August 21-23, 2024
- **Application Deadline:** April 19, 2024
- **Eligibility:** Qualified applicants must hold a doctoral degree (Ph.D., M.D., etc.). Only applicants working in the field of aging or actively considering this research field will be considered. All applicants must be a U.S. citizen, non-citizen national, or permanent resident.

NIA's 50th Anniversary

- 2024 marks the **50th** anniversary of the National Institute on Aging
- Since 1974, NIA has led **broad scientific efforts** to understand the **nature of aging** and to extend the **healthy, active years** of life
- Learn about **major milestones** in NIA's history: www.nia.nih.gov/50years



To celebrate, NIA is conducting a series of activities throughout 2024 to **highlight progress** over the past 50 years and to **inspire future generations** of aging researchers.



Connect with NIA/BSR

- Contact a Program Officer: [BSR Staff Listing](#)
- Check out our [Workshop Reports](#)
- Review active [Notices of Funding Opportunity Announcements](#)
- Explore our [Networks](#) and [Centers Programs](#)
- Learn about [BSR's AD/ADRD Areas of Emphasis](#)
- Explore our [Data Resources](#)