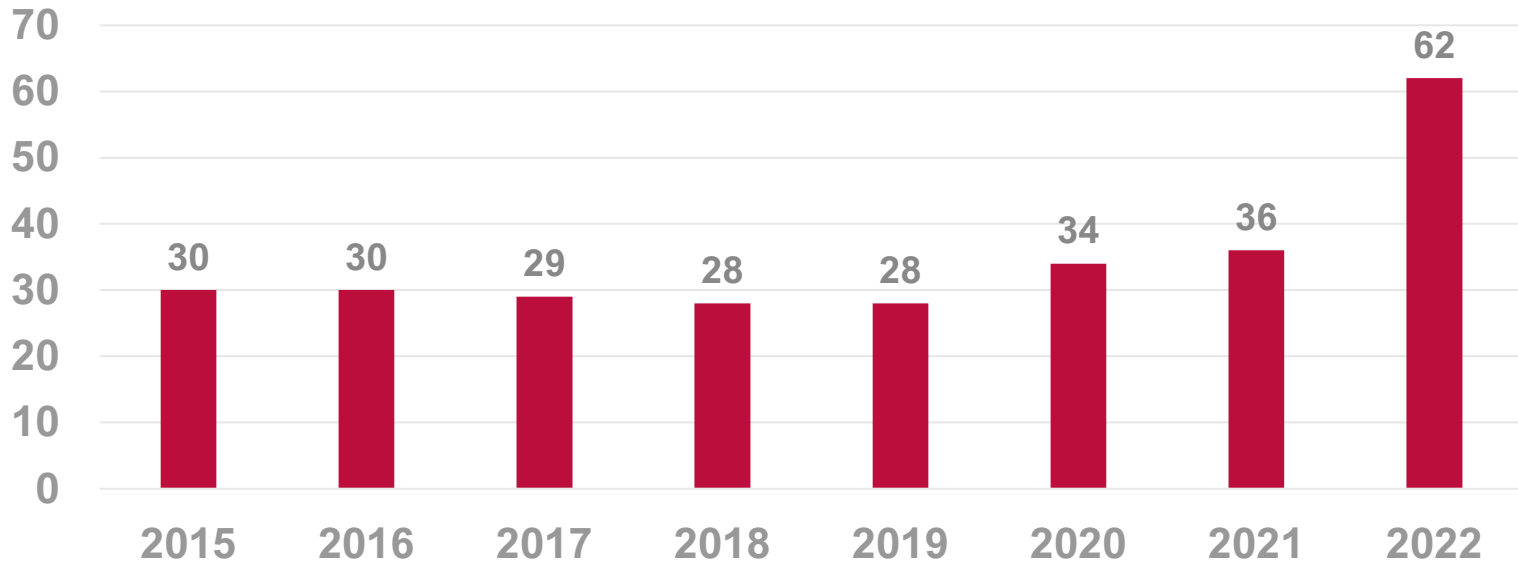


Sexual and Gender Minority Cancer Research Support at NCI

David Dean Jr., PhD, MS

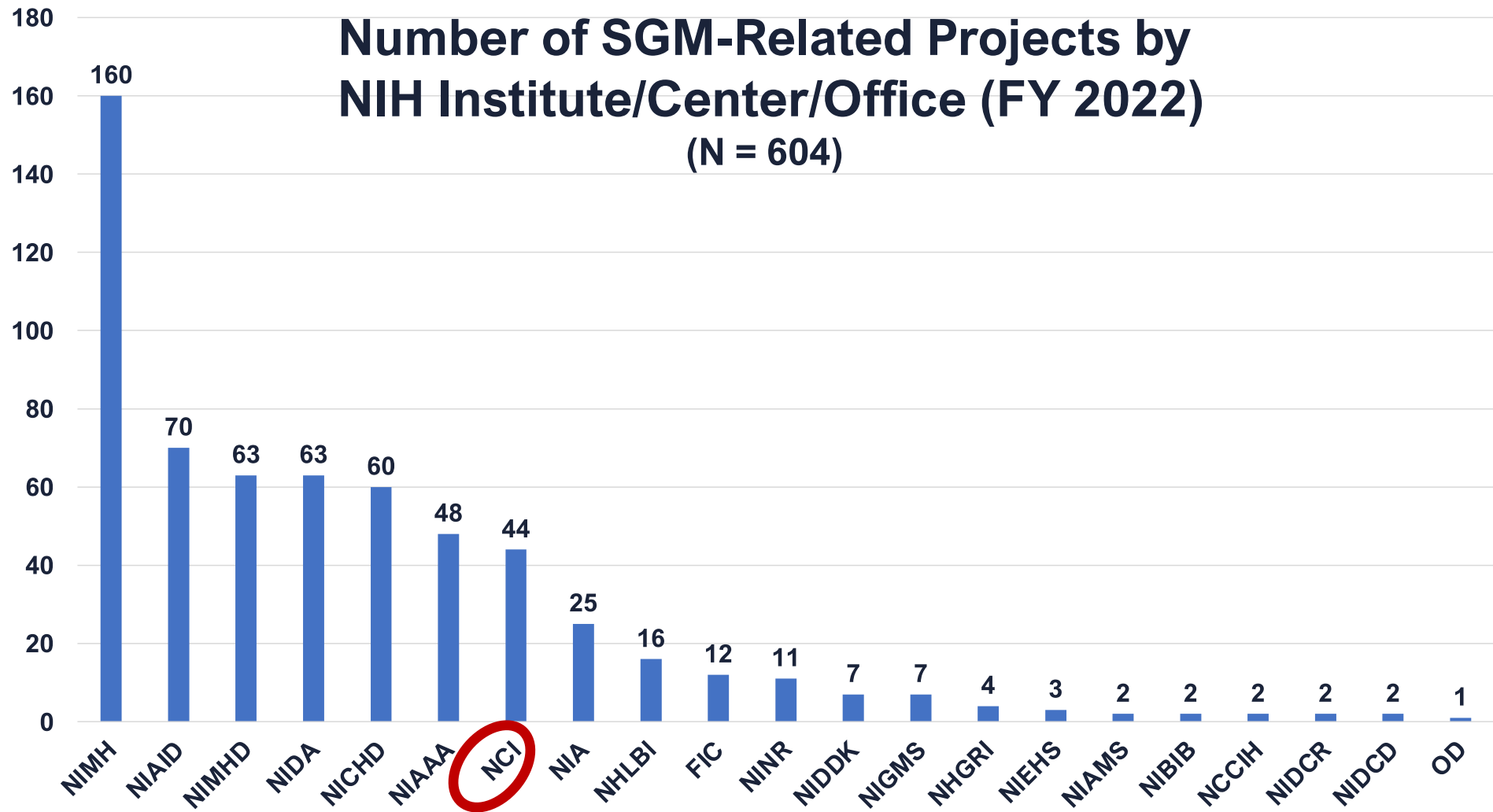
Growth in SGM-Related Cancer Projects Funded from FY 2015 to FY 2022



FY 2022 yielded the highest level of funded cancer-related projects to date!

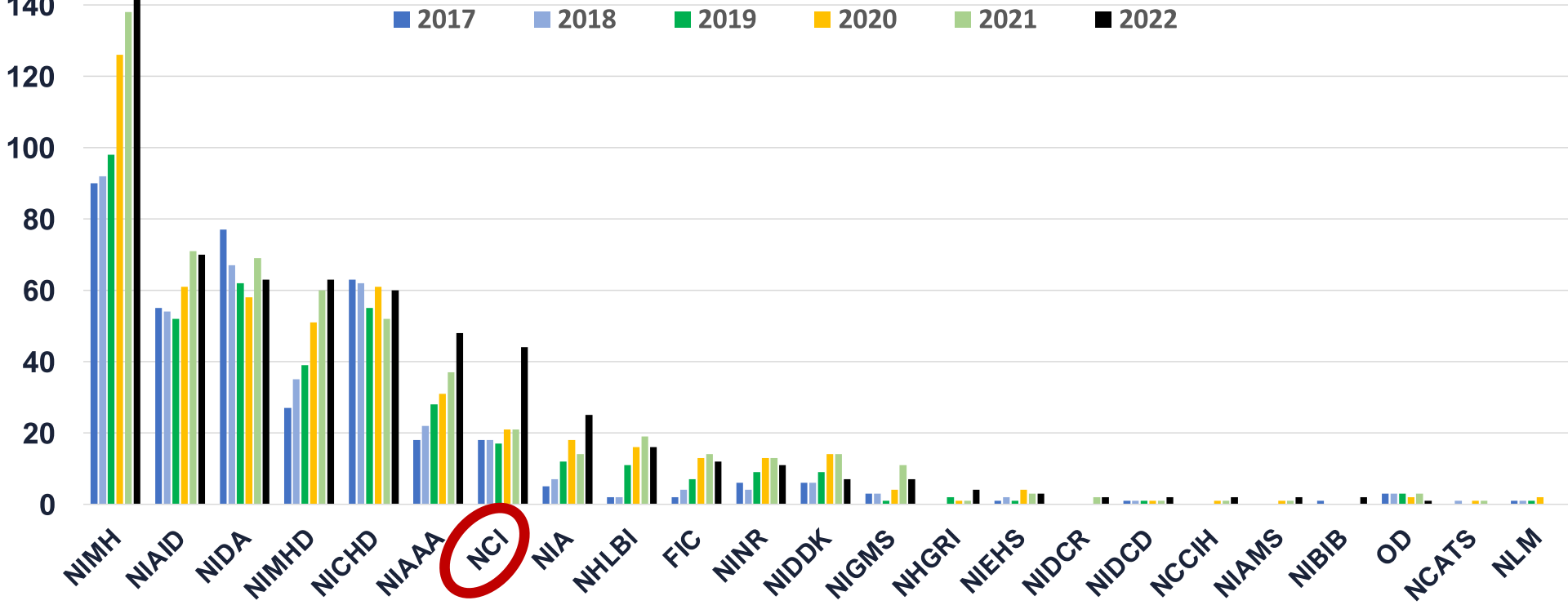
Number of SGM-Related Projects by NIH Institute/Center/Office (FY 2022)

(N = 604)



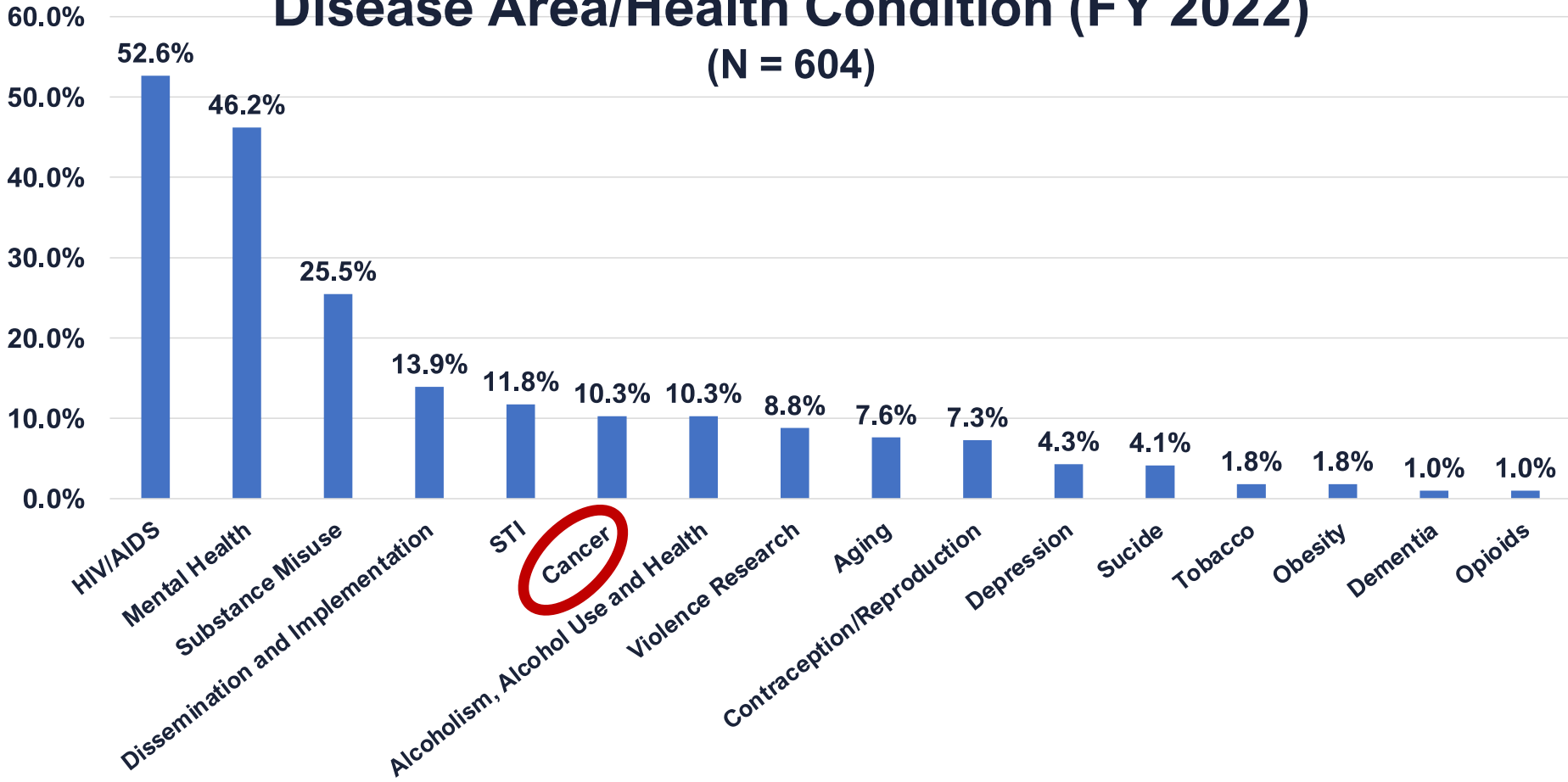
Number of SGM-Related Projects by NIH Institute/Center/Office

(FY 2017 N = 379, FY 2018 N = 384, FY 2019 N = 408, FY 2020 N = 502, FY 2021 N = 546, FY 2022 N = 604)

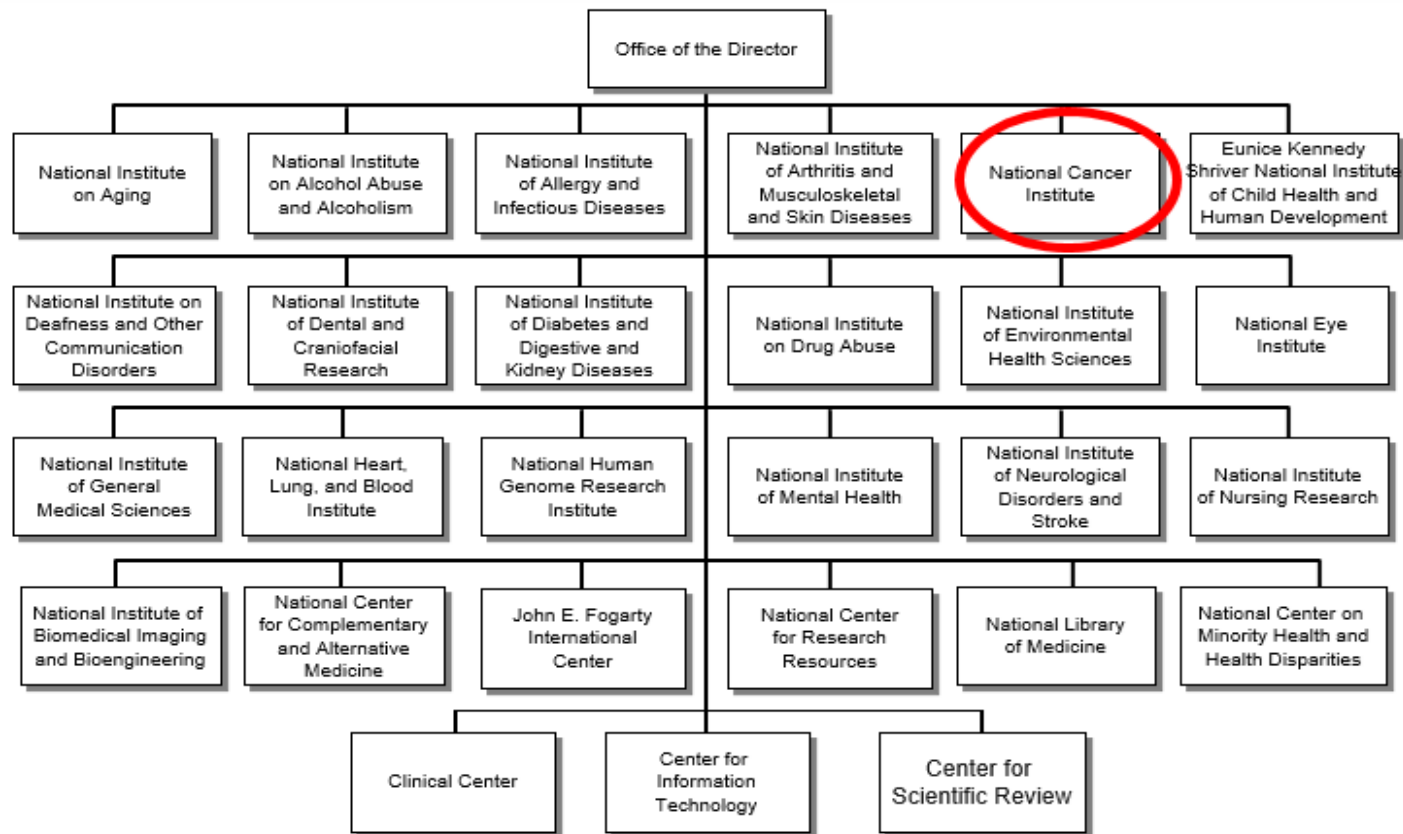


Proportion of SGM Projects by Disease Area/Health Condition (FY 2022)

(N = 604)

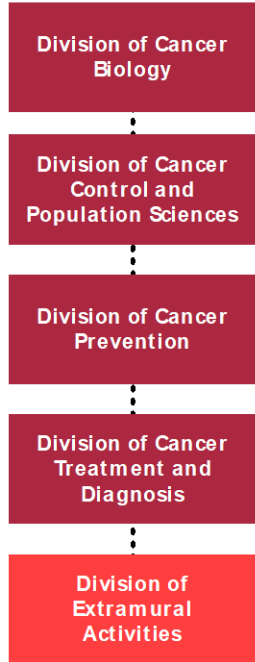


National Institutes of Health & National Cancer Institute

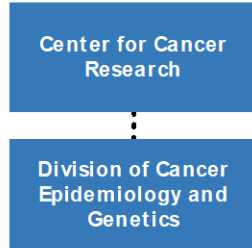


NATIONAL CANCER INSTITUTE

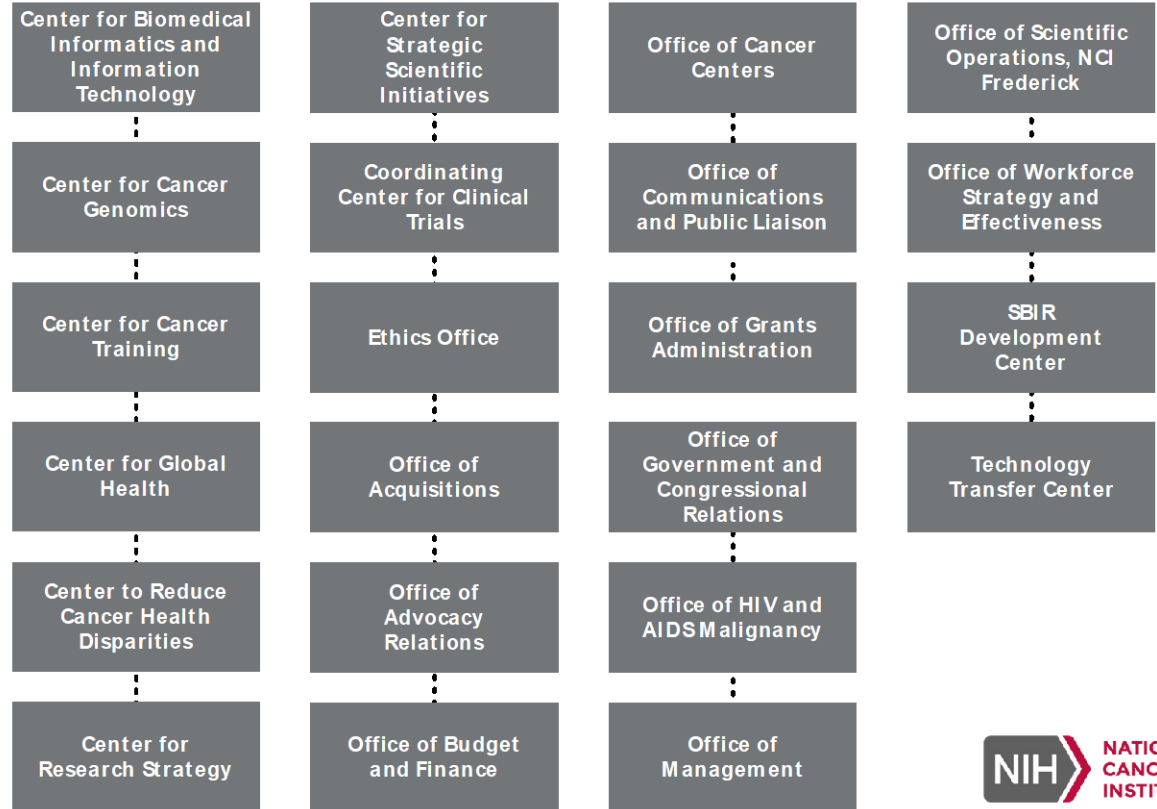
Extramural



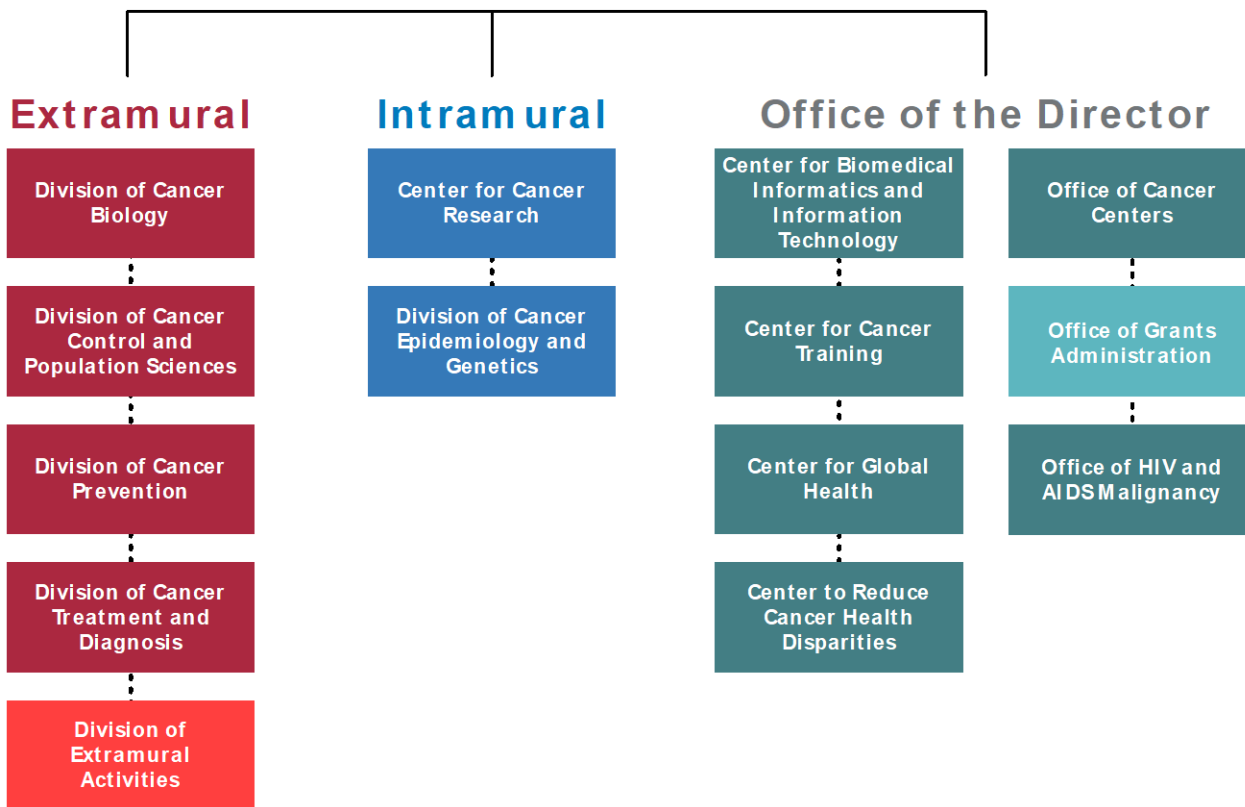
Intramural



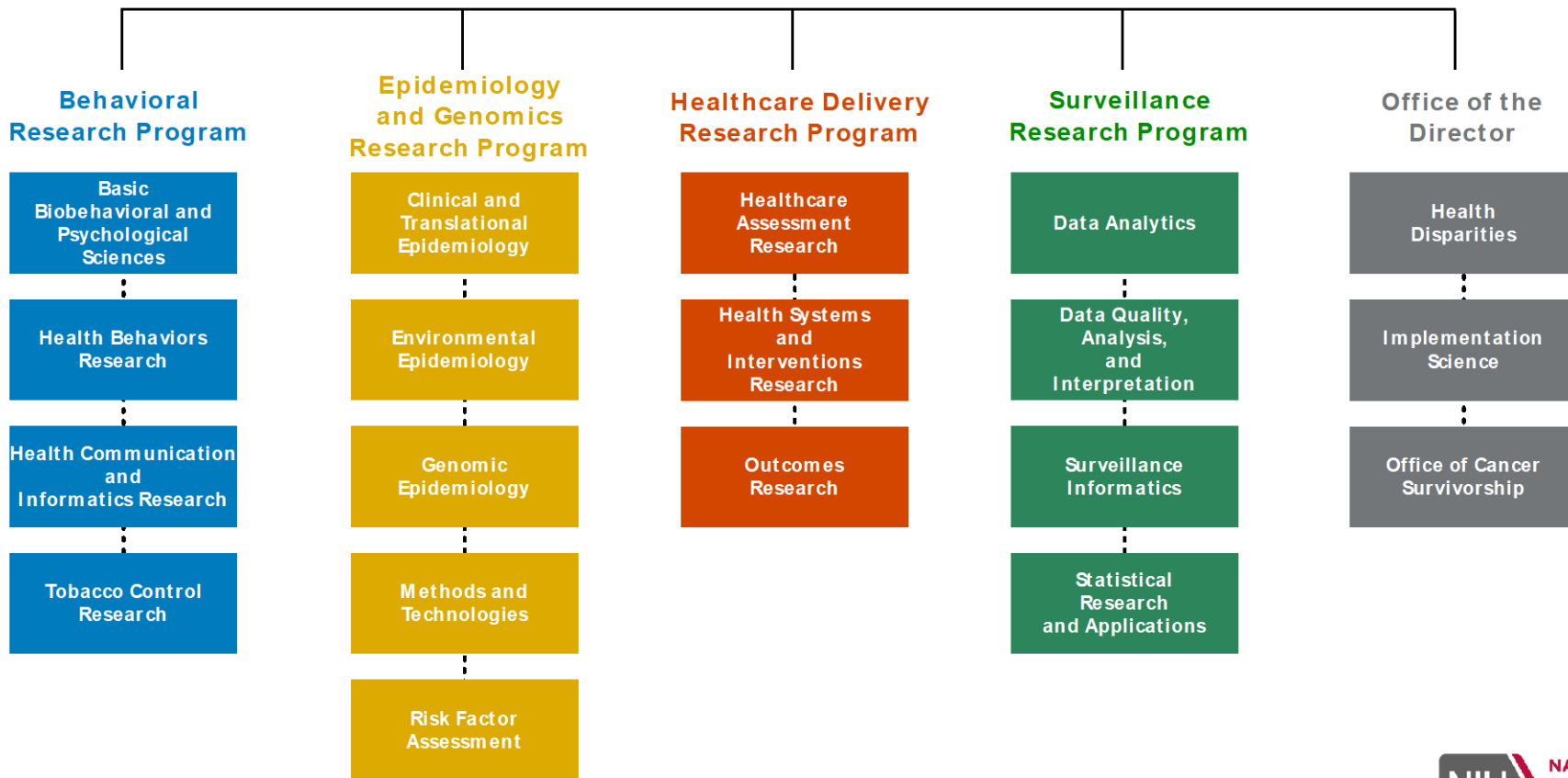
Office of the Director



NATIONAL CANCER INSTITUTE



DIVISION OF CANCER CONTROL AND POPULATION SCIENCES



NCI – Cancer Control Research

THE CANCER CONTROL CONTINUUM

FOCUS

Etiology

- Environmental factors
- Genetic factors
- Gene-environment interactions
- Medication (or pharmaceutical exposure)
- Infectious agents
- Health behaviors

Prevention

- Tobacco control
- Diet
- Physical activity
- Sun protection
- HPV vaccine
- Limited alcohol use
- Chemoprevention

Detection

- Pap/HPV testing
- Mammography
- Fecal occult blood test
- Colonoscopy
- Lung cancer screening

Diagnosis

- Shared and informed decision making

Treatment

- Curative treatment
- Non-curative treatment
- Adherence
- Symptom management

Survivorship

- Coping
- Health promotion for survivors

CROSSCUTTING AREAS

Communications · Surveillance · Health Disparities · Decision Making

Implementation Science · Health Care Delivery · Epidemiology · Measurement

Adapted from David B. Abrams, Brown University School of Medicine



NATIONAL CANCER INSTITUTE

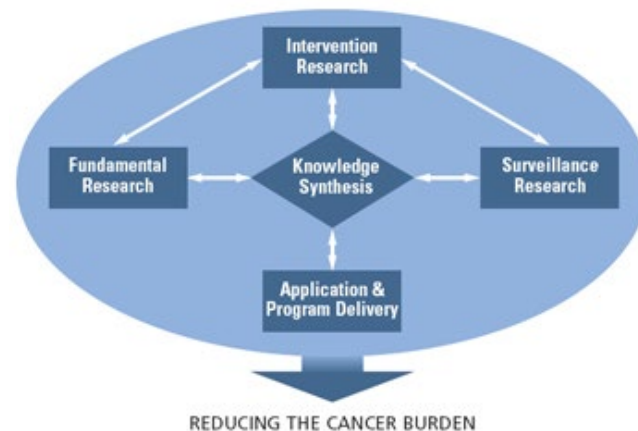
Division of Cancer Control & Population Sciences

<https://cancercontrol.cancer.gov/>

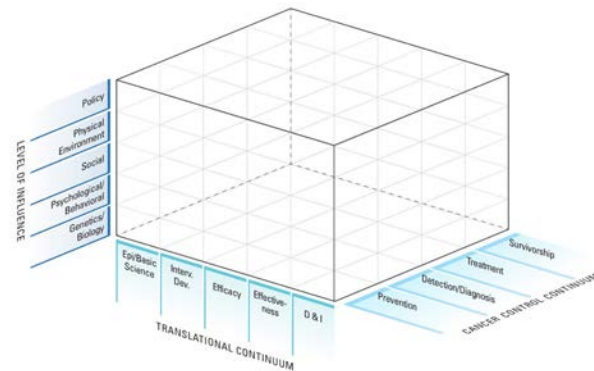


NATIONAL CANCER INSTITUTE

Cancer Control Research Activities



A multi-level, translational framework for understanding and improving cancer-related health behaviors



DCCPS SGM cancer research support efforts – 2023

- **Research**

- supplements to support SOGI data collection and SGM inclusion
- SGM cancer survivorship PAR

- **Workforce**

- meetings on LGBTQ+ research participation (& OCS webinar)
- SGM cancer research training at MD Anderson and meeting at NYU

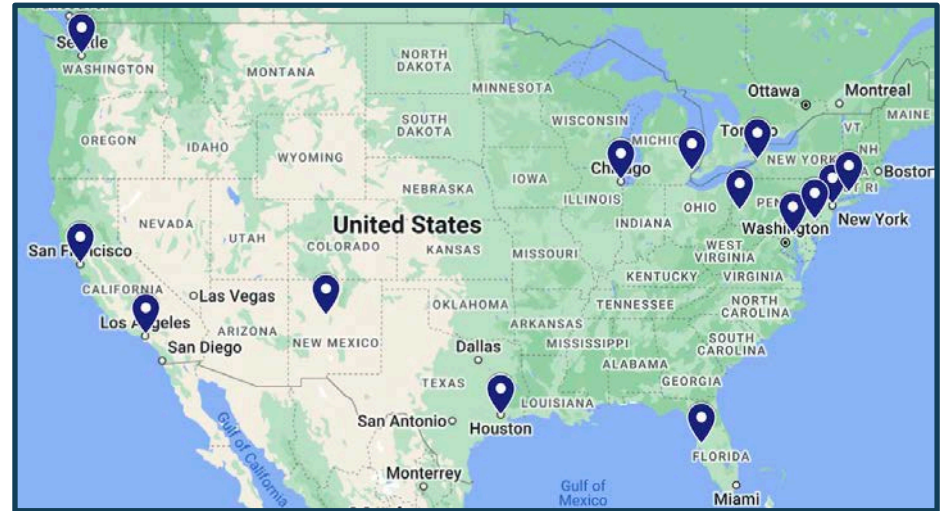
- **Culture**

- formed the DCCPS Sexual and Gender Minority Interest Group
- held first meeting on Thursday 9 November

NCI-DCCPS Efforts to Support Monitoring and Inclusion of SGM Populations

NCI Cancer Center Support Grants Supplements

- <https://cancercontrol.cancer.gov/research-emphasis/supplement/sexual-orientation-gender-identity>
- **Purpose:** study implementation of SOGI data collection at NCI-Designated Cancer Centers, in collaboration with satellite and outlying clinics, and to assess factors associated with implementation, such as feasibility, acceptability, adoption, and appropriateness
- Awarded: 14



DCCPS Administrative Supplements to Initiate or Augment Outreach to and Inclusion of SGM Populations

Notice of Special Interest (NOSI) NOT-CA-23-032: Administrative Supplements to Initiate or Augment Outreach to and Inclusion of SGM Populations

- <https://grants.nih.gov/grants/guide/notice-files/NOT-CA-23-032.html>
- Purpose: An opportunity for supplemental funding to current grantees for studies that include SGM populations in cancer control research to enhance or accelerate the understanding of cancer-related health behaviors, care delivery, or health outcomes specific to the SGM population
- Several supplements awarded

Improving Care and Outcomes for Cancer Survivors from Sexual and Gender Minority (SGM) Populations

PAR-23-292 (R01 Clinical Trial Optional)

- Purpose: To support the rigorous assessment of **barriers to quality cancer treatment** and **follow-up care** for sexual and gender minority (SGM) cancer survivors, and to address a critical need for **improved care delivery and outcomes** for SGM cancer survivors.
- Goal: To address the disease burden in an **underserved and understudied population** that is at higher risk of poorer health outcomes.

NCI Contact:
David Dean Jr., PhD, MS
Program Director
Chipper.Dean@nih.gov

Pre-Application Webinar: 17 November 2023
Earliest Submission Date: 5 January 2024
First Available Due Date: 5 February 2024
Expires: 8 January 2027



<https://grants.nih.gov/grants/guide/pa-files/PAR-23-292.html>

Improving Care and Outcomes for Cancer Survivors from SGM Populations (R01 Clinical Trial Optional) (PAR-23-292)

■ Purpose

- support the **rigorous assessment of barriers to quality cancer treatment and follow-up care for sexual and gender minority (SGM) cancer survivors**, addressing a critical need in an underserved and understudied population that is at higher risk of poorer health outcomes
- observational and/or interventional studies of SGM survivors designed to **understand barriers and/or improve care and outcomes** for SGM people with cancer, using **interoperable sexual orientation and gender identity (SOGI) data collection** in cancer care settings, where appropriate

Purpose of the PAR

- Fund **observational and intervention research** to:
 - **further understand and address predictors** of SGM disparities in cancer care
 - **support innovative, feasible and effective interventions** to address SGM disparities in cancer care
- Including:
 - **sexual orientation and gender identity (SOGI)** measurement
 - identified **endpoints of interest** in cancer control

Key Scientific Areas for SGM Cancer Survivors

1. Understanding and/or addressing **barriers to cancer treatment and follow-up care**
2. Approaches to address risk factors for **poorer mental and physical health outcomes**
3. Testing interventions focusing on providers to **improve cancer care**

Review Criteria

- **Standard**
 - **Scored review criteria:** Significance, Innovation, Investigators, Approach, Environment
 - **Additional review criteria:** Study timeline (for clinical trials), protections for human subjects, inclusion, vertebrate animals, biohazards
 - **Additional review considerations:** Check NOFO to see resource sharing plan requirements (e.g., data sharing plan) or other listed requirement
- **Specific to this NOFO (3 areas)**

Specific Review Criteria: Investigator(s) & Environment

- Investigator(s)
 - How adequate is the PD(s)/PI(s) **SGM cancer research expertise** as well as their **ties to the SGM community** that will enable them to build trusting partnerships and facilitate SGM cancer survivorship population and/or provider recruitment?
- Environment
 - How well does the application describe **community partner engagement**?
 - How well does it include a plan for **integrated participation of researchers and SGM community members**, and where relevant to the proposed research, **integrated participation [of] care providers and health system administrators**?

Specific Review Criteria: Approach

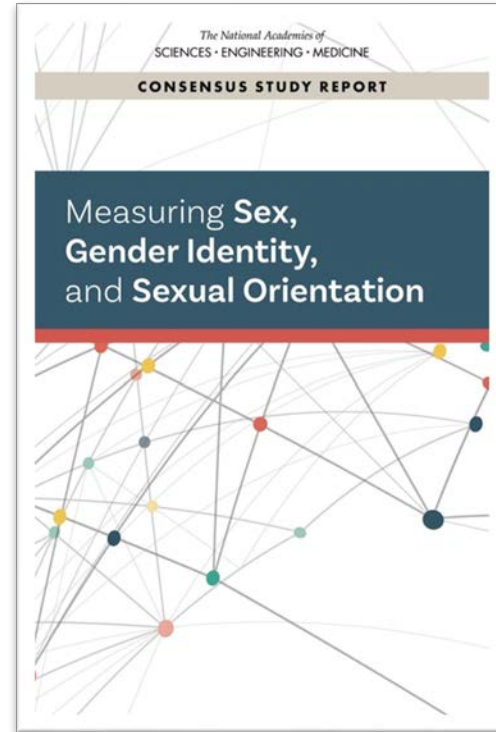
- Where appropriate, how well does the application describe an existing **standardized SOGI data collection process** that is fully integrated into clinical workflows or include plans to create such a process as part of the proposed research?
- Where appropriate, **how consistent with the recent NASEM report** (or appropriately adapted) are the SOGI data collection measures included in the application?
- How well does the application include **clinically meaningful endpoints**, such as adherence to treatment and surveillance recommendations, psychosocial and functional outcomes, indicators of care quality, patient experiences of care, provision of culturally sensitive care, or avoidable utilization of urgent and emergency care?

Specific Review Criteria: Approach

- Where appropriate, how well does the application provide a clear justification for the selection of a **specific patient population(s), cancer type(s), and care setting(s)**?
- Where appropriate, how well does the application consider **which populations experience the poorer outcomes**, and oversample or exclusively sample individuals from that group, where relevant?
- How inclusive are the methods in accounting for the **social and intersectional contexts of the SGM populations proposed**? How are these contexts considered and accounted for in the research design, methods, and analyses?
- How well do the methods adopted include the concerns of the institution/clinic/community and **account for the social and intersectional contexts** to improve the understanding and knowledge of cancer control and prevention?

SOGI Data Collection

- **NASEM report (2022)**
 - recommendations for specific SOGI measures
 - acknowledgement of the need for measure development
- **Application considerations**
 - provide rationale and context
 - focus on interoperability or ability to harmonize



DCCPS SGM cancer research support 2024 plans

- **Workforce**

- consulting with extramural researchers
- work with DCCPS staff and Branch Chiefs to identify ways to support visibility/outreach to SGM applicants

- **Culture**

- recent SGMIG meeting topic: overview and discussion of best practices for communicating about sex, gender, gender identity, and related topics
- upcoming topics: SOGI measurement, trans/non-binary research

- **Research**

- encourage SGM cancer survivorship PAR applications
- support SOGI data collection and SGM research inclusion

Applications: Review Process & Outcomes

- **Process:** <https://grants.nih.gov/grants/peer-review.htm>
 - **First level (SRG):** primarily non-federal scientists (extramural peers)
 - **Second level (IC NACs or Boards),** with IC directors making final decisions
 - **Becoming a Peer Reviewer (NIH):**
https://grants.nih.gov/grants/peer/becoming_peer_reviewer.htm
- **Funding Policy**
 - **NCI Grant Policies:** <https://deainfo.nci.nih.gov/grantspolicies/>
 - **NCI Interim Funding Policy for RPG Awards FY 2024:**
<https://deainfo.nci.nih.gov/grantspolicies/interimfundltr.htm>
 - **NCI Bottom Line:** <https://www.cancer.gov/grants-training/nci-bottom-line-blog>

The latest from the Bottom Line blog...

NCI Research Project Grants Funding Policy for FY24

| Competing Grants | | | Noncompeting (Continuing) Grants |
|---|------------------------|------------------------|--|
| TYPE | INTERIM PAYLINE | FINAL PAYLINE | |
| R01 Grants for Established and New Investigators | 9th Percentile | 10th Percentile | Will be funded at 95% of the committed level. Excluded from the 5% reduction: <ul style="list-style-type: none">• Training awards• R00, R03, R50• SBIR/STTR awards• P30 Cancer Center awards |
| R01 Grants for Early-Stage Investigators | 14th Percentile | 17th Percentile | |
| R21 Exploratory Grants | 9th Percentile | 10th Percentile | |

Applications: Resources for Consideration

- NIH: <https://grants.nih.gov/grants/how-to-apply-application-guide/format-and-write/write-your-application.htm>
- NCI Division of Cancer Control and Population Sciences (DCCPS) - <https://cancercontrol.cancer.gov/>
 - DCCPS SGM: <https://healthcaredelivery.cancer.gov/sgm/>
 - DCCPS sample grant proposals - <https://cancercontrol.cancer.gov/brp/funding/sample-application.html>
- SGMRO: <https://dpcpsi.nih.gov/sgmro>
- NIMHD: <https://www.nimhd.nih.gov/>

Applications: Process Suggestions

- Contact a **Program Director** and/or **PoCs** listed in a specific NOFO
- Use the **Referral Tool**:
<https://public.csr.nih.gov/ForApplicants/ArtHome>
- Refer to **CSR submission process** information:
<https://public.csr.nih.gov/ForApplicants/PlanningAndWriting/submissionprocess>
- Submit a **Letter of Intent** (if required/appreciated) – opportunity to help CSR/NCI identify appropriate expertise for review
- Complete the **PHS Assignment Request Form**

4/22/2024

NCI Contact Information

For SGM cancer Control Topics, please reach out to:

NCI_DCCPS_SGM_IG@mail.nih.gov

Staff leading SGM population sciences work at NCI:



David Dean Jr, PhD, MS

Behavioral Research Program
chipper.dean@nih.gov



Ann Geiger, PhD, MPH

Healthcare Delivery Research Program
ann.geiger@nih.gov



Amy Kennedy, PhD, MPH

Office of the Director, DCCPS
amy.kennedy@nih.gov



Ashley Wilder Smith, PhD, MPH

Healthcare Delivery Research Program
smithas@mail.nih.gov

<https://cancercontrol.cancer.gov/hdhe/research-emphasis/health-sexual-gender-minorities>



**NATIONAL
CANCER
INSTITUTE**

www.cancer.gov

www.cancer.gov/espanol