



NIH Office of Research on Women's Health

White House Initiative on Women's Health Research

Vivian OTA WANG, Ph.D., FACMG, CGC

Deputy Director
Office of Research on Women's Health/DPCPSI/OD
National Institutes of Health

May 30, 2024



National Institutes of Health
Office of Research on Women's Health

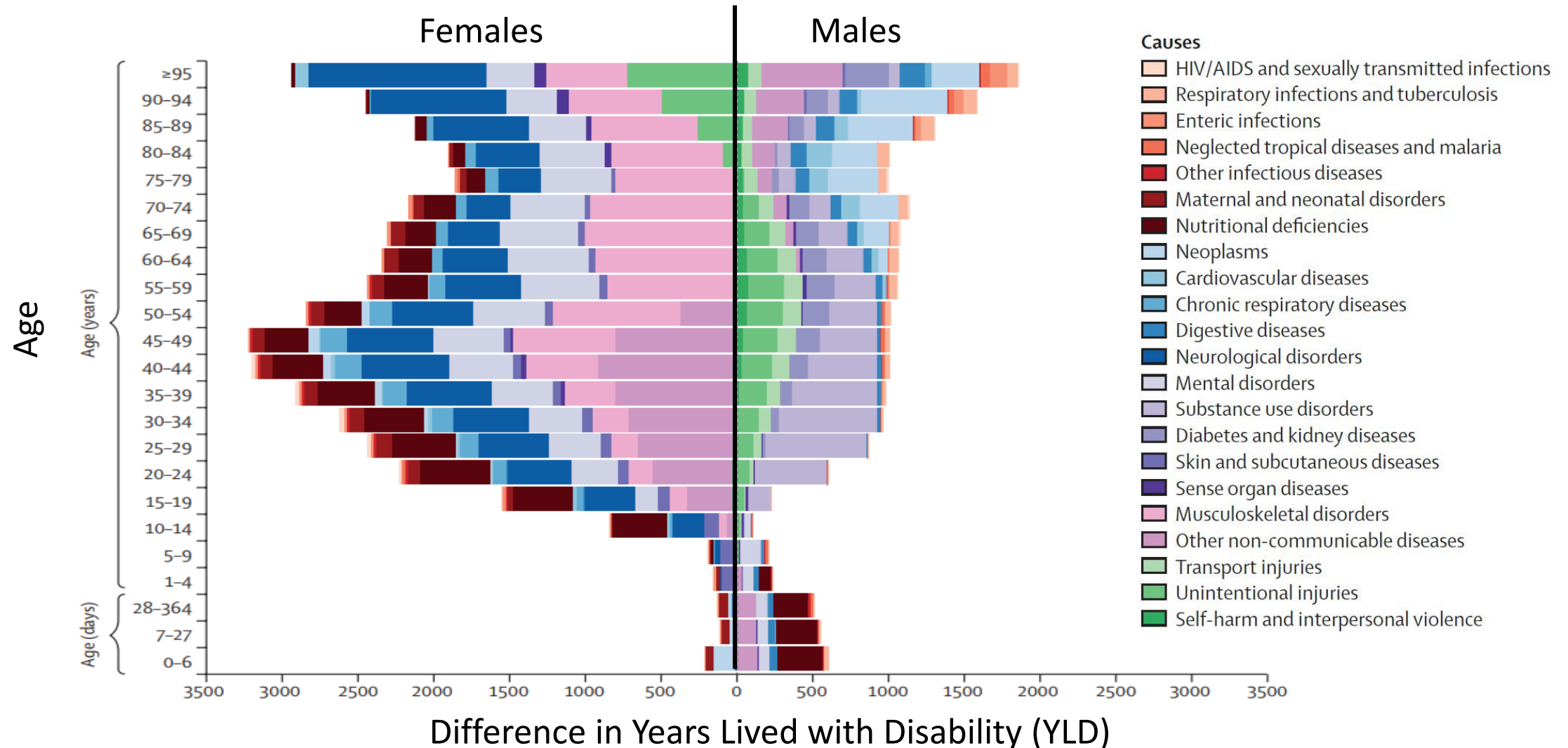
Facebook: [/NIHORWH](https://www.facebook.com/NIHORWH)
Twitter: [@NIH_ORWH](https://twitter.com/NIH_ORWH)

www.nih.gov/women
[#ResearchForWomen](https://twitter.com/NIH_ORWH)

Women and Men May Follow Different Paths to Disease and Health

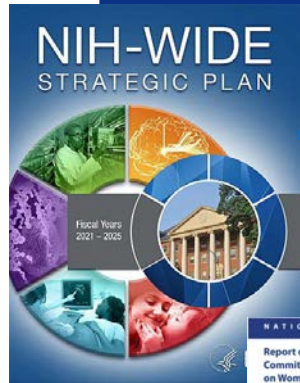


Women Differently Experience Health and Disease



Women's Health Research Landscape

NIH Strategic Plans and Reports



Women's Health= Cross cutting theme



NIH WHR Biennial Report FY 21-22



NIH-Wide Women's Health Research Strategic Plan

Other Partners and Entities

Women's Health Innovation Opportunity Map 2023

50 High-Return Opportunities to Advance Global Women's Health R&D

The Women's Health Innovation Opportunity Map identifies 50 opportunities that are critical for catalyzing innovation to improve the health of women. We, the Innovation Equity Forum, urge stakeholders across the research and development ecosystem to draw inspiration from and act on these highlighted opportunities to advance equitable, high-return innovations for women's health.

IEF WH Innovation Opportunity Map

NASEM Inclusion Report



Pathways to Prevention (P2P) Program

Identifying Risks and Interventions to Optimize Postpartum Health

Maternal Mortality Crisis



NASEM Women's Health Report

NEW NIH Women's Health Research Study



NEW NASEM Women's Health Chronic Disease Framework

US Government Related Directives



Presidential Memo & Executive Order 14120



NIH Women's Health Conference Report

BMC Womens Health, 2023; 23: 162.
Published online 2023 Apr 6. doi: [10.1186/s12905-023-02319-x](https://doi.org/10.1186/s12905-023-02319-x)

PMCID: PMC10077654
PMID: 37024841

Chronic conditions in women: the development of a National Institutes of health framework

Sarah Janin

Understanding Chronic Conditions Understudied Among Women (R01 Clinical Trial Optional)

R01 Research Project Grant

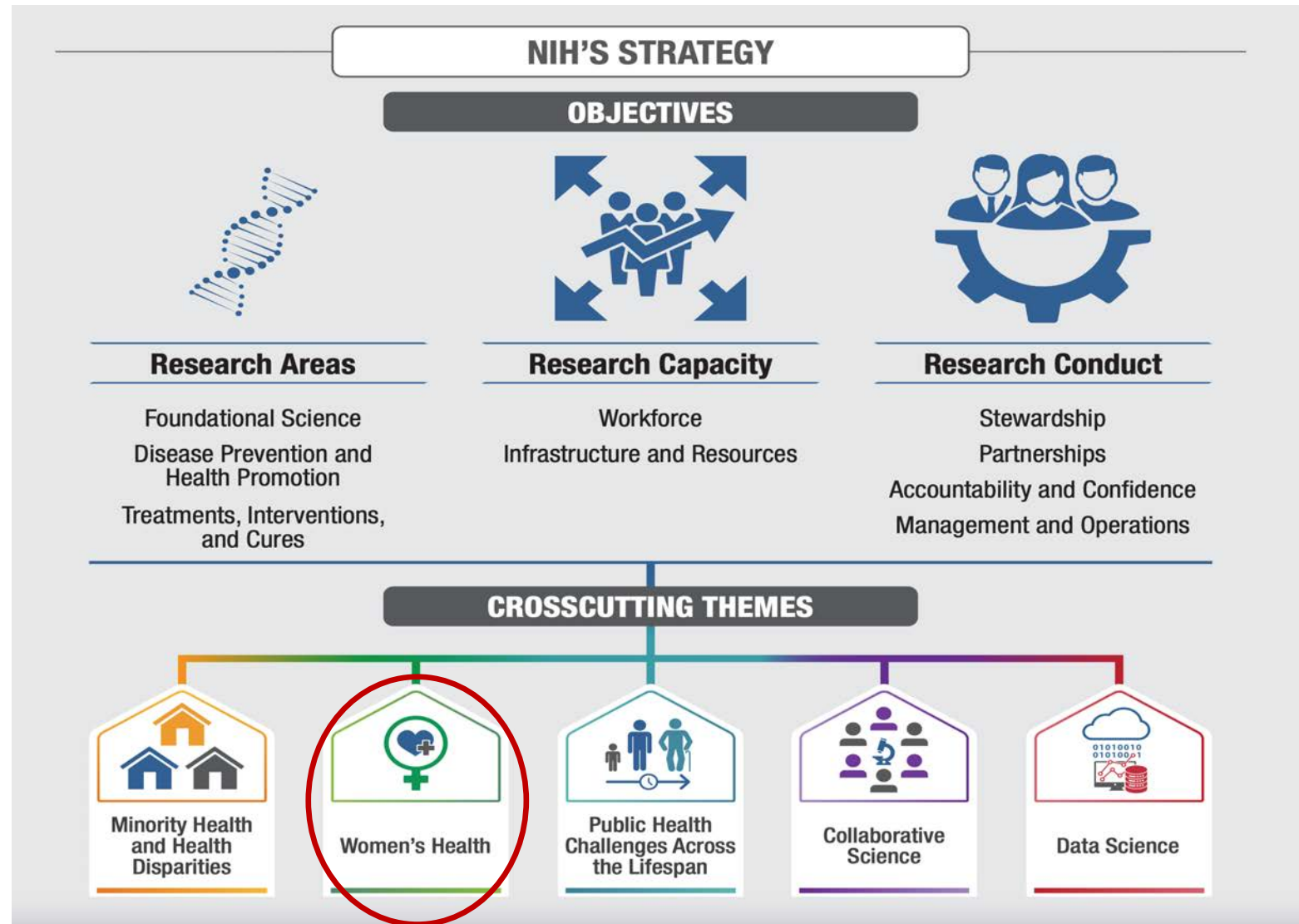
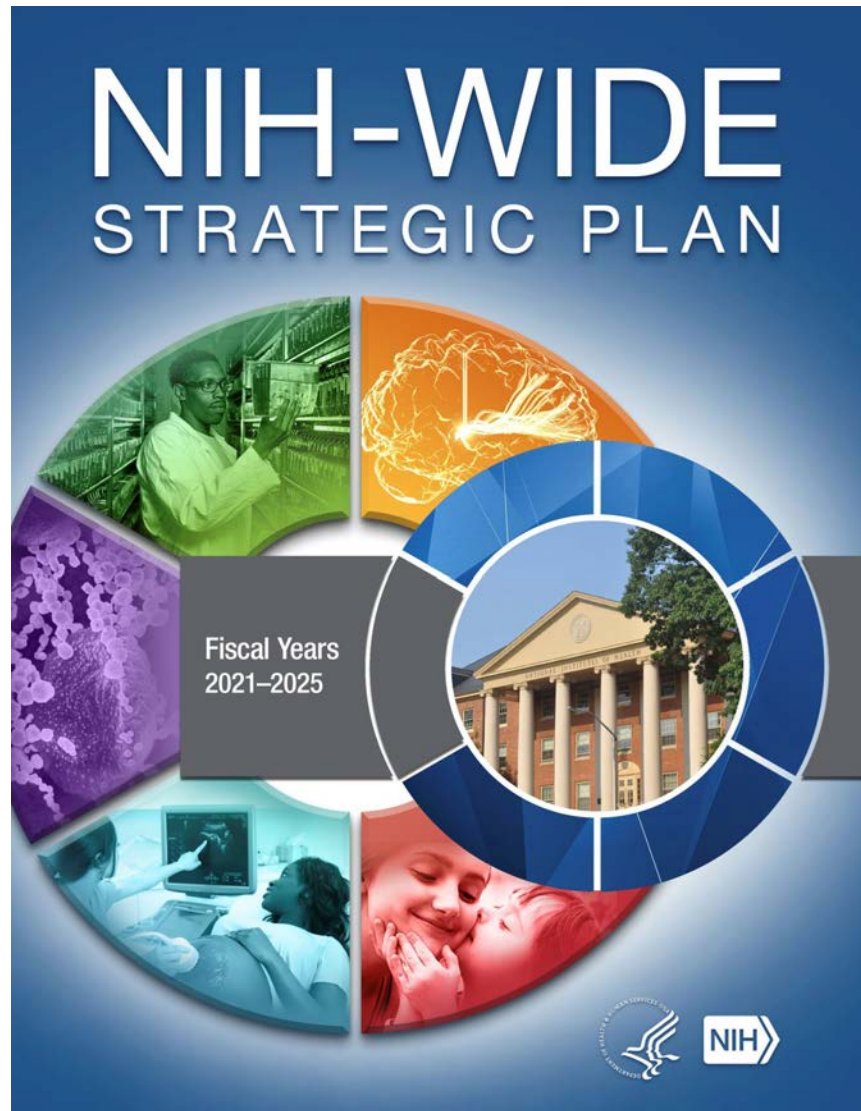
Chronic Disease and Women's Health RFAs



NIH National Institutes of Health
Office of Research on Women's Health

2021-2025 NIH-Wide Strategic Plan

Strengthens Research for Women



Office of Research on Women's Health (ORWH) Mission



Enhance and expand
women's health research



Include women and minority
groups in clinical research



Promote career advancement
for women in biomedical careers

NIH Vision



Sex and gender integrated
into biomedical research



Every woman receives
evidence-based care



Women in science careers
reach their full potential



2024-2028 NIH-Wide Strategic Plan for Women's Health Research



NIH National Institutes of Health
Office of Research on Women's Health

2024-2028

*NIH-Wide Strategic Plan
for Research on the
Health of Women*



Transforming Women's Health Throughout the Lifespan



NIH National Institutes of Health
Office of Research on Women's Health

2024-2028

NIH-Wide Strategic Plan
for Research on the
Health of Women

Area 1



Consider how the ***intersection of social and biological factors*** affect the health of women

Area 2



Support the development of ***data science, innovative research methods & measurements, and promote cutting-edge technologies*** for the health of women

Area 3



Support ***biomedical workforce training*** and promote women scientists' ***career development*** to advance the health of women

Area 4



Advance basic science and translational research to improve the health of women

Area 5



Encourage ***community engagement and promote implementation science*** for the health of women

White House Women's Health Research Initiative

NOVEMBER 17, 2023

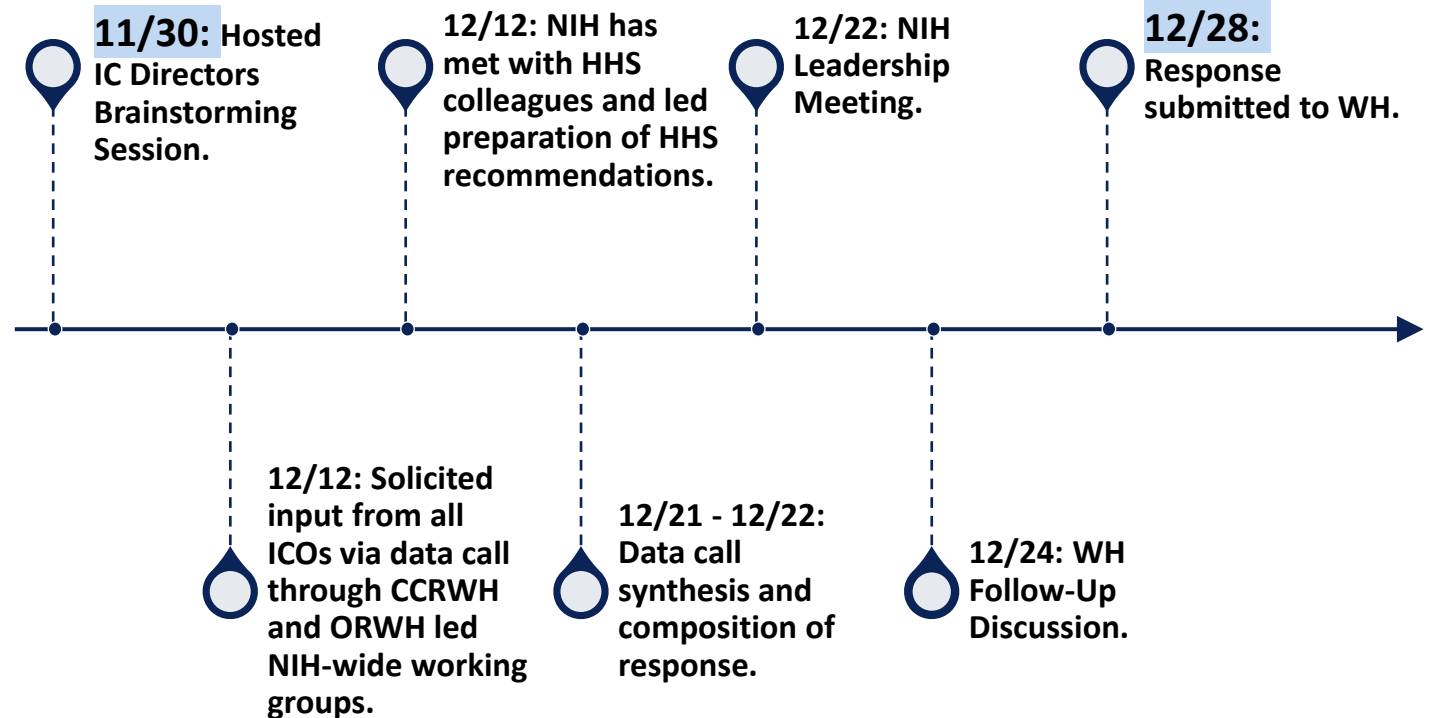
Launch of White House Initiative on Women's Health Research

 GPC BRIEFING ROOM BLOG

On November 13, President Biden announced the first-ever White House Initiative on Women's Health Research, an effort led by First Lady Jill Biden and the White House Gender Policy Council.



Presidential Memorandum Signed on
November 13th, 2023



Executive Order 14120: Advancing Women's Health Research and Innovation



The most comprehensive set of executive actions to expand and improve research on women's health.



- **Integrates Women's Health Across the Federal Research Portfolio** | *develop and strengthen research and data standards* on women's health across all relevant research and funding opportunities.
- **Prioritizes Investments in Women's Health Research** | towards funding and encouraging *high-impact research and innovation*.
- **Galvanizes New Research on Women's Midlife Health** | narrow research gaps that are more likely to *occur after menopause and diseases and conditions associated with women's midlife health*.
- **Assesses Unmet Needs to Support Women's Health Research** | *determine gaps in federal funding for women's health research and identify changes*—whether statutory, regulatory, or budgetary—that are needed to maximally support the broad scope of women's health research.

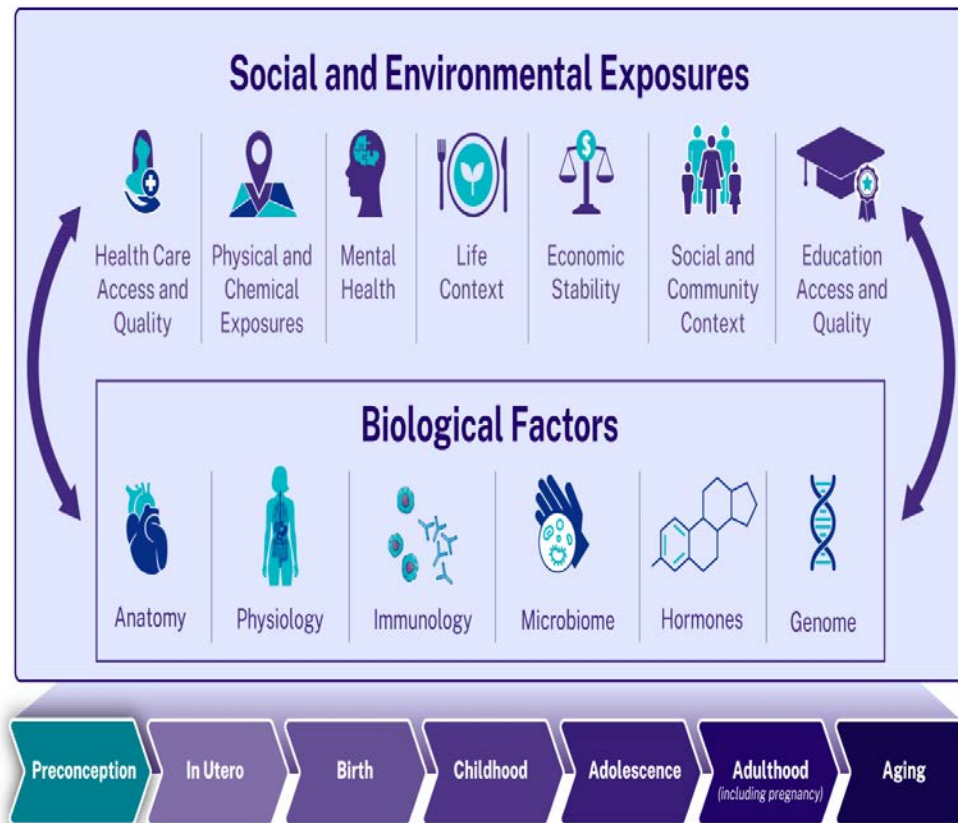
MARCH 13, 2024

Executive Order Extends Across U.S. Government Partners



NIH Actions & Efforts Aligned with Executive Order Requirements

Health of Women Across the Life Course



Launch NIH-wide FY2025 \$200M effort

- Close women's health research gaps across the lifespan
- New, interdisciplinary women's health research that traverses traditional NIH Institute and Centers' missions

Co-chaired by NIH Office and Institute Directors

- *Office of Research on Women's Health (ORWH)*
- National Institute on Aging (NIA)
- National Institute on Arthritis, Musculoskeletal and Skin Disease (NIAMS)
- *Eunice Kennedy Shriver* National Institute of Child Health and Human Development (NICHD)
- National Institute on Drug Abuse (NIDA)
- National Heart, Lung and Blood Institute (NHLBI)





NIH Actions & Efforts Aligned with Executive Order Requirements

Create a **Front Door** to NIH Funding Opportunities on Women's Health

New [NIH-wide Women's Health Research NOSI](#) to NIH parent funding opportunities across Institutes/Centers/Offices. **ORWH** with NLM will **create a front door to NIH funding opportunities & resources** related to women's health research.

Standardize Data to Support Research on Women's Health

NIH launching an effort **to identify and develop new common data elements** related to women's health that **will help researchers share and combine datasets, promote interoperability, and improve the accuracy of datasets.**

Support **Private Sector Innovation** Through Additional Federal Investments in Women's Health Research

NIH **Small Business Innovation Research Program** and the **Small Business Technology Transfer Program** committed to **further increasing—by 50 percent—its investments in research and development on women's health.**

Create a **Comprehensive Menopause Research Agenda**

NIH [launching its first Pathways to Prevention series](#) on menopause and the management of menopause related issues.

Use **Biomarkers** to Improve the Health of Women Through **Early Detection and Treatment** (e.g. Endometriosis)

NIH [launching a new research initiative](#) on **biomarker discovery and validation** to help improve our ability to **prevent, diagnose, and treat conditions that uniquely affect women.**



NIH-Wide Women's Health Research Notice of Special Interest (NOSI)

Notice of Special Interest: Women's Health Research

Notice Number:
NOT-OD-24-079

Key Dates

Release Date:	March 26, 2024
First Available Due Date:	May 06, 2024
Expiration Date:	November 05, 2027

*In alignment with the White House Women's Health Research Initiative, NIH issued this Notice of Special Interest to highlight interest in receiving research applications **focused on diseases and health conditions that predominantly affect women, present and progress differently in women, or are female-specific.***



